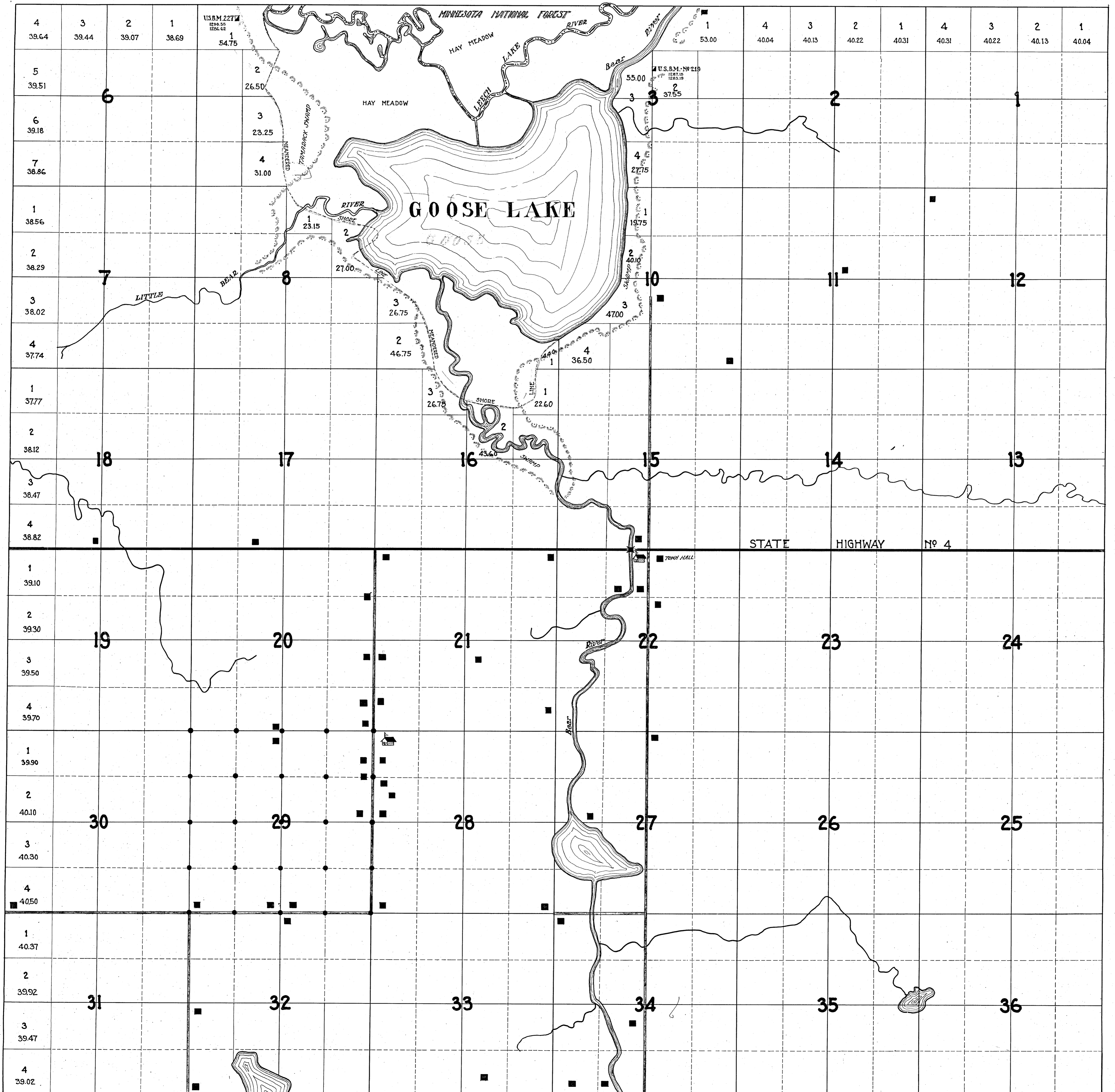


SALEM

TOWNSHIP 143 NORTH, RANGE 26 WEST 5TH P.M.



#6067 OFFICE OF COUNTY ENGINEER
C.J. WHITE COUNTY ENGINEER CASS CO.
WALKER MINNESOTA.
ORIGINAL PLAT MADE JULY 1922
GRANT W. ROBERTS - DRAFTSMAN -
FILE NO. 0-10