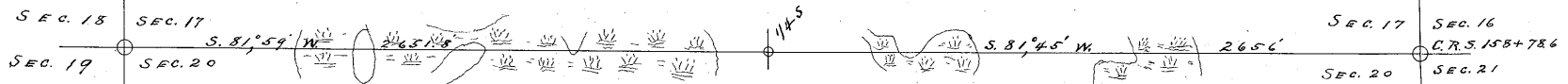


1-0



T. 145 N., R. 31 W.



Plat of the Center Line for a County Road

Between

Secs. 17 & 20, T. 145 N., R. 31 W. of the 5th P. M.,

Cass County, Minnesota.

Scale, 1 : 4800.

#5893

FIELD NOTES OF A SURVEY OF THE CENTER LINE FOR A COUNTY ROAD BETWEEN SECS. 17 & 20, T. 140 N., R. 31 W., OF THE 5TH S. T., Cass County, Minnesota.

first. The instruments used in the survey were a transit and a 100 foot steel chain tape. The bearings are given according to the magnetic meridian, except those of the U. S. B. T's (County Roads), which are given according to the U. S. true north. All distances are given in feet and hundredths of a foot, except those of the U. S. B. T's, which are given in links. The "County Road Survey" refers to State Road No. 1. U. S. B. (County Road) refers to the road mentioned in the caption of the field notes.

Beginning at C. R. S. station 138--78.0, at the corner of Secs. 16, 17, 20 & 21, T. 140 N., R. 31 W., a hub for the section corner, set according to the following U. S. B. T's;

Norway Pine, 20 in. in diam.,	S. 300° E.,	38	Links,
" " " " "	N. 530° E.,	77	" "
" " " " "	S. 370° W.,	46	" "
" " " " "	E. 120° W.,	40	" "
and from which bear the following C. R. S. T's;	S. 2° 1' S,		
Norway Pine Stump, 18 in. in diam.,	N. 310, 40' E.,	61.70	Feet.
" " " " "	S. 400, 45' E.,	75.34	" "
" " " " "	N. 650, 51' W.,	36.36	" "
Jack Pine, 9 " " "	S. 360, 30' W.,	95.30	" "

thence, S. 610, 45' W. to the 1/4 S corner between Secs. 17 & 20, 1000.00 Feet, enter marsh. 1140.00 Feet, leave the marsh. 1200.00 Feet, enter marsh. 1370.00 Feet, leave the marsh. 1500.00 Feet, the 1/4 S corner between Secs. 17 & 20, from which bear the following U. S. B. T's;

Jack Pine, 10 in. in diam., (Now fallen) S. 330° E.,	8	Links,	
" " " " " (Stump of) N. 20° E.,	12	" "	
and from which bear the following C. R. S. T's;			
Norway Pine, 9 in. in diam.,	N. 180, 5' E.,	31.94	Feet.
Jack Pine, 12 " " "	S. 180, 15' E.,	41.46	" "

to the head of spikes. Following Jack and Norway pine land. Soil, a sandy loam.

thence, S. 610, 03' W. to the corner of Secs. 17, 18, 19 & 20, 1200.00 Feet. Enter marsh. 1250.00 " Leave the marsh. 1410.00 " Enter marsh. 1600.00 " Leave the marsh. 1700.00 " Enter marsh. 1820.00 " Leave the marsh. 1900.00 " the corner of Secs. 17, 18, 19 & 20, from which bear the following U. S. B. T's;

Jack Pine, 7 in. in diam.,	N. 610° E.,	35	Links.
" " " " "	N. 330° W.,	22	" "
" " " " "	S. 840° W.,	17	" "
" " " " "	S. 620° E.,	14	" "
and from which bear the following C. R. S. T's;			
Jack Pine, 13 in. in diam.,	N. 750, 5' W.,	67.36	Feet.
" " " " "	N. 340, 5' E.,	62.06	" "
" " " " "	S. 550, 30' W.,	69.70	" "
" " " " "	S. 210, 00' E.,	66.72	" "

to the heads of spikes. The high portion of the line is the sandy loam of the Norway and Jack pine country. The marsh has a good bottom found at a depth of two to two and a half feet from the surface. It has been mowed and traveled over.

