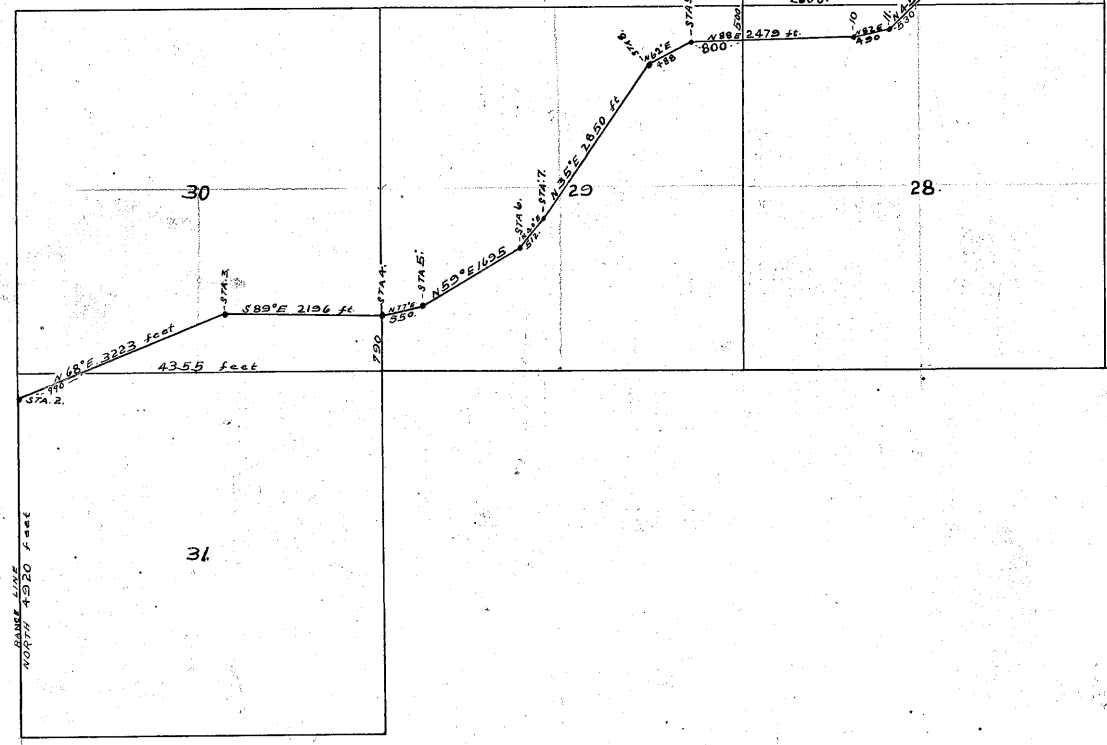


Inguadonna Road Survey
 T. 140 R. 27.

SCALE 4" = ONE MILE



To the County Commissioners Cass Co. Minn:
 The undersigned John W. Curo having been employed by you to make a survey of a road in said County would report that the following is a correct survey thereof, as made by me under your direction to wit:

Beginning at Sta 1 being the S.W. corner of Twp 140. Rge 27. Thence North along Range line, 4920. ft to the center of the Old Cross Lake RR. grade, being Sta 2. Thence N 68° E @ 990 feet cross section at a point 4355 feet west of N.E. cor. Sec 31 @ 3223. ft. Sta 3. Thence S 89° E 2196. ft Sta 4 being a point on the Sec line 790. ft North of the S.W. Corner of Sec 29. Thence N 77° E 550. ft to Sta 5. Thence N 59° E 1695. ft to Sta 6. Thence N 40° E 512. ft to Sta 7. Thence N 35° E 2850. ft to Sta 8. N 62° E 488. ft to Sta 9. N 88° E @ 800 feet cross Sec Line at a point 500. ft South of the N.W. Cor. Sec 28: at 2479. feet Sta 10. Thence N 82° E 490. ft to Sta 11. Thence N 45° E @ 530 feet cross sec line at a point 2600. feet East of the N.W. Cor. of Sec 28: @ 2115 feet Sta 12. Thence N 39° E 1258. ft to Sta 13. Thence N 1° E 491. ft to Sta 14. Thence N 24° W 784. ft to Sta 15. N 4° W 323. ft to Sta 16. N 17° W 1015. ft to Sta 17. N 9° E 255. ft to Sta 18. N 31° E 274. ft to Sta 19 being a point on the Sec line 1360 feet West of the N.E. Cor. Sec 22. N 74° E 418. ft to Sta 20. Thence N 116° E 1112. ft to Sta 21. being a point on the Sec line, 1505. feet South of the 1/4 post between Sections 15 and 16. Thence N 46° E 416. ft to Sta 22. Thence N 16° E 822. ft to Sta 23. Thence N 49° E 970. feet to Sta 24. being the end of the old RR. grade Thence N 67° E 3696. ft to Sta 25. being a point on the Sec line, 1650. ft South of the N.W. Corner Sec 14. Thence N. 67° E 2838. feet to Sta 26. intersecting the Road S. Center line of Sec 14 at a point 500. feet South of the 1/4 post in Deep Lake between sections 11. and 14. all in Twp 140. N. Rge 27. W. 5.P.M.

I hereby certify that the above is a correct copy of the survey of wagon road, running from the S.W. Corner of Twp 140. Rge 27, Northwesterly to a point near the 1/4 post between sections 11. and 14. in said town and range, which was made by me June 30th 1908 to July 7th 1908. under your direction.
 Made at Pine River Minn this 10th day of July A.D. 1908.
 John W. Curo
 County Surveyor

RECORDED ON PAGES 6, 15, 47, 48
 ROAD CALENDAR 'A'

OK.