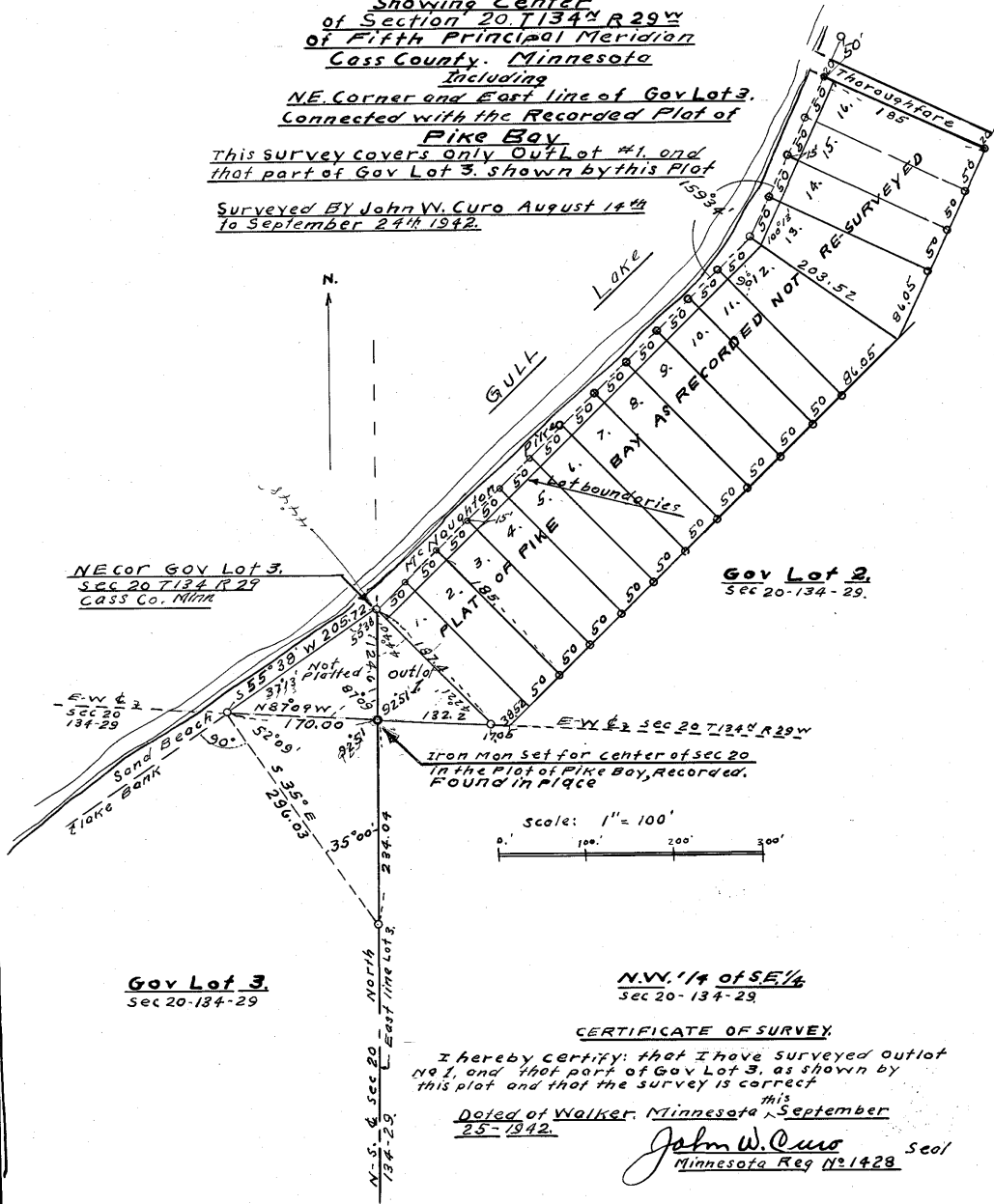


FLAT
showing Center
of Section 20 T134N R29W
of Fifth Principal Meridian
Cass County, Minnesota

Including
NE Corner and East line of Gov Lot 3,
Connected with the Recorded Plot of
Pike Bay

This survey covers only Outlot #1, and
that part of Gov Lot 3, shown by this Plot

Surveyed BY John W. Curo August 14th
to September 24th 1942.



NECOR Gov Lot 3,
SEC 20 T134 R 29
CASS Co. MINN

Gov Lot 2
SEC 20-134-29.

Gov Lot 3
Sec 20-134-29

N.W. 1/4 of S.E. 1/4
SEC 20-134-29.

CERTIFICATE OF SURVEY.

I hereby certify, that I have surveyed outlot
 #1, and that part of Gov Lot 3, as shown by
 this plot and that the survey is correct

Dated at Walker, Minnesota, this September
25-1942.

John W. Curo Seal
 Minnesota Reg No 1428