

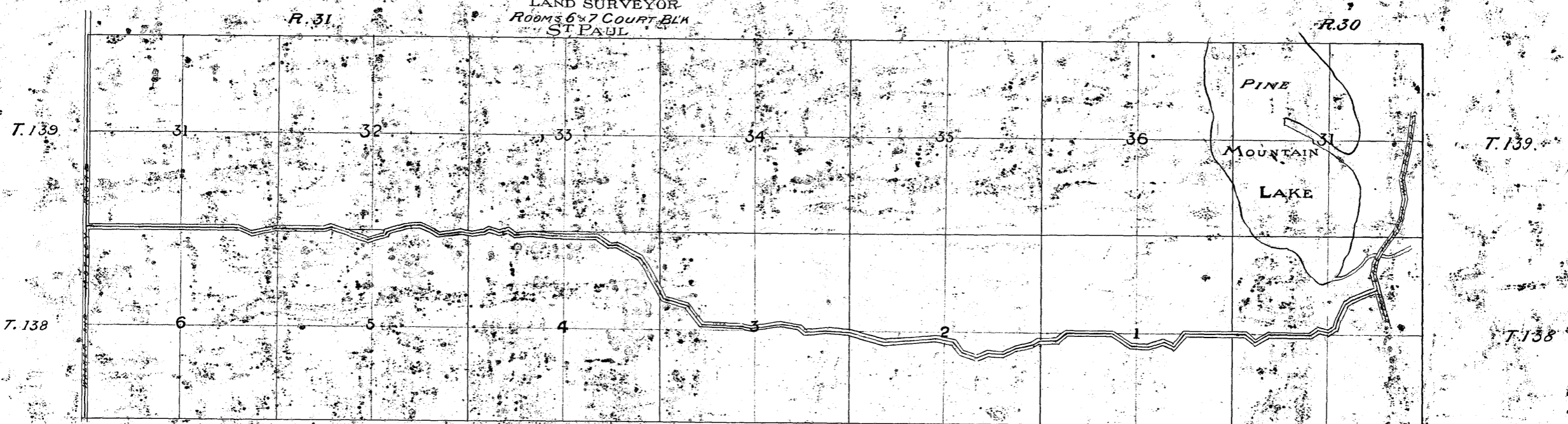
MAP AND SURVEY

OF THE

BACKUS AND BIG SWAMP ROAD

CASS CO. MINN.

SURVEYED AND DRAWN BY
CHAS. A. FORBES
 CIVIL ENGINEER
 AND
 LAND SURVEYOR
 ROOMS 6 & 7 COURT BLDG
 ST. PAUL



DESCRIPTION

Beginning at the North West Corner of Section 6, TOWN 138 RANGE 31, CASS COUNTY Thence EAST on North Line of Sec. 4, 330 FT. Thence S. 68° 31' E. 393.5 FT. Thence N. 77° 29' E. 627 FT. Thence E. 1360.3 FT. Thence N. 79° 30' E. 181 FT. Thence S. 72° E. 1414 FT. Thence N. 72° 30' E. 462 FT. Thence S. 7° E. 1269 FT. Thence N. 72° E. 329.5 FT. Thence N. 84° E. 365.9 FT. Thence S. 75° E. 331 FT. S. 61° E. 242.5 FT. Thence N. 68° 15' E. 604.5 FT. Thence N. 83° 45' E. 284 FT. Thence N. 68° 15' E. 314.2 FT. Thence N. 51° E. 202.7 FT. Thence S. 81° 30' E. 289.4 FT. Thence N. 67° E. 226 FT. Thence S. 68° E. 497.3 FT. Thence N. 82° E. 627.3 FT. Thence N. 87° 15' E. 511 FT. Thence N. 89° 27' E. 1211.2 FT. Thence S. 58° 35' E. 422.4 FT. Thence N. 79° 27' E. 175 FT. Thence S. 65° 33' E. 767.4 FT. Thence S. 41° 33' E. 201.4 FT. Thence S. 32° 21' E. 1109 FT. Thence S. 73° 10' E. 671 FT. S. 38° E. 665 FT. Thence EAST 1088 FT. Thence S. 81° 27' E. 285.5 FT. Thence N. 81° 03' E. 326.5 FT. Thence S. 81° 27' E. 493 FT. Thence S. 51° E. 255 FT. Thence N. 86° 05' E. 580 FT. Thence S. 87° 15' E. 675 FT. Thence S. 67° 30' E. 933 FT. Thence N. 88° 30' E. 1414 FT. Thence S. 70° 15' E. 492.5 FT. Thence S. 33° 45' E. 322 FT. Thence S. 63° 15' E. 318 FT. Thence N. 66° 15' E. 292.3 FT. Thence S. 86° E. 291 FT. Thence N. 64° 30' E. 408 FT. Thence N. 76° 45' E. 350 FT. Thence N. 60° E. 405 FT. Thence N. 86° 45' E. 230.5 FT. Thence N. 55° 30' E. 320.9 FT. Thence N. 89° 15' E. 1228.7 FT. Thence S. 58° E. 688.5 FT. Thence S. 89° 15' E. 405.3 FT. Thence N. 72° E. 468.0 FT. Thence S. 70° 15' E. 277 FT. Thence N. 42° 30' E. 447.8 FT. Thence N. 89° 15' E. on line through centre of Section 1. Thence S. 55° E. 310 FT. Thence N. 61° E. 427 FT. Thence N. 89° 15' E. 1100.8 FT. Thence N. 53° 30' E. 233.7 FT. Thence S. 79° E. 248.5 FT. Thence N. 56° E. 20 FT. Thence N. 6° E. 178 FT. Thence N. 31° E. 353.5 FT. Thence N. 38° 45' E. 450 FT. Thence N. 71° E. 217.4 FT. Thence N. 74° E. 158.6 FT. Thence N. 77° 45' E. 546 FT. To the intersection with the LEECH LAKE and CROW WING ROAD as it now exists.

I have surveyed the above described Road, from the points as indicated on the map and I hereby certify that the courses and distances as shown by this map and description are correct.

Charles A. Forbes
SURVEYOR

State of Minnesota
 County of Ramsey. On this 27th day of January A.D. 1904, personally appeared before the undersigned CHARLES A. FORBES to me well known and he acknowledged that he executed the foregoing certificate as his own free act and deed and of his own free will.

J. M. Davison
NOTARY PUBLIC
RAMSEY COUNTY, MINN.

I, James M. Garfield, County Surveyor of Cass County, do hereby certify that the above plat is a true copy of the survey made by Chas. A. Forbes.

James M. Garfield
Co. Surveyor
Cass Co.