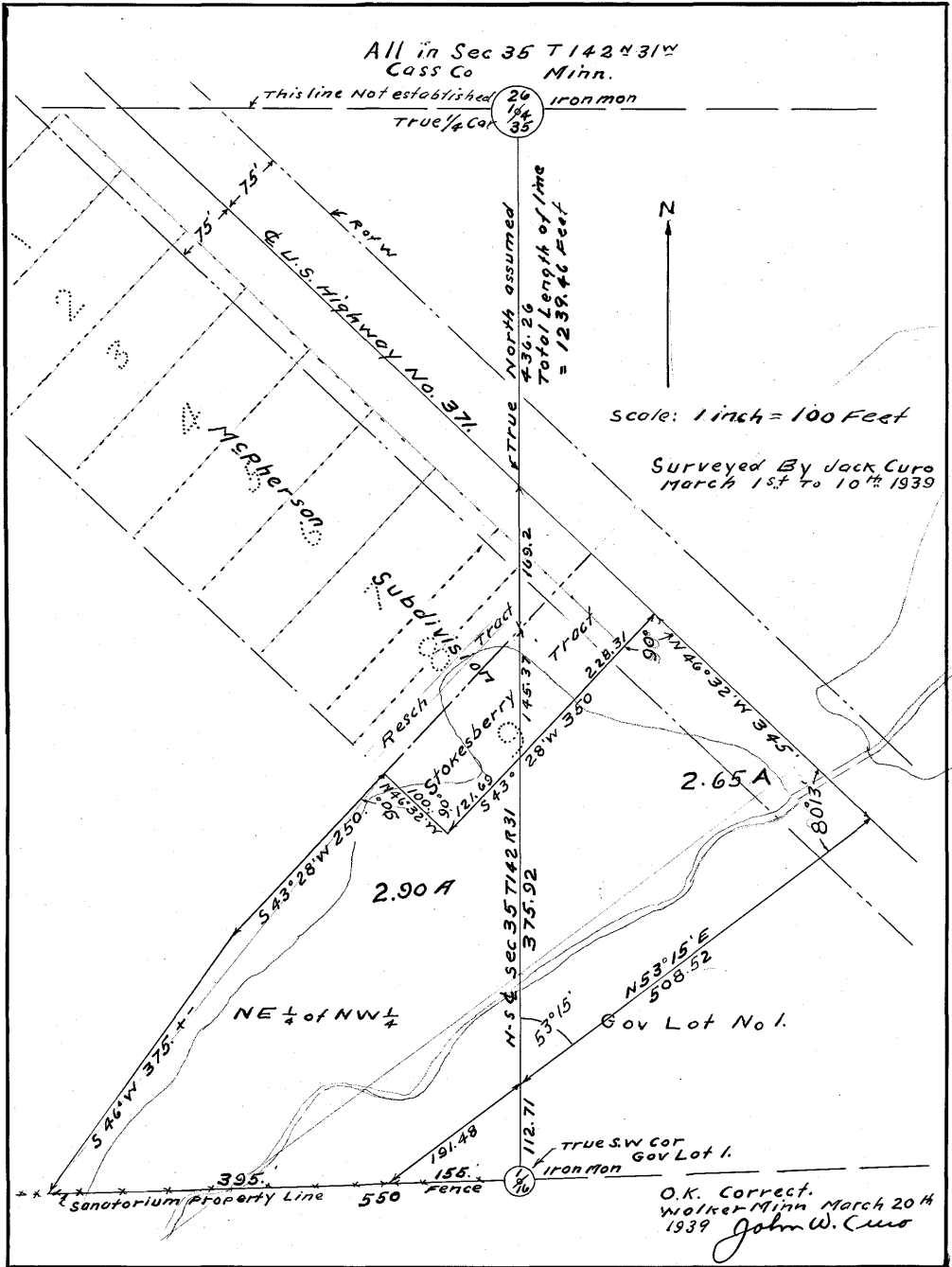


McPherson



#5866

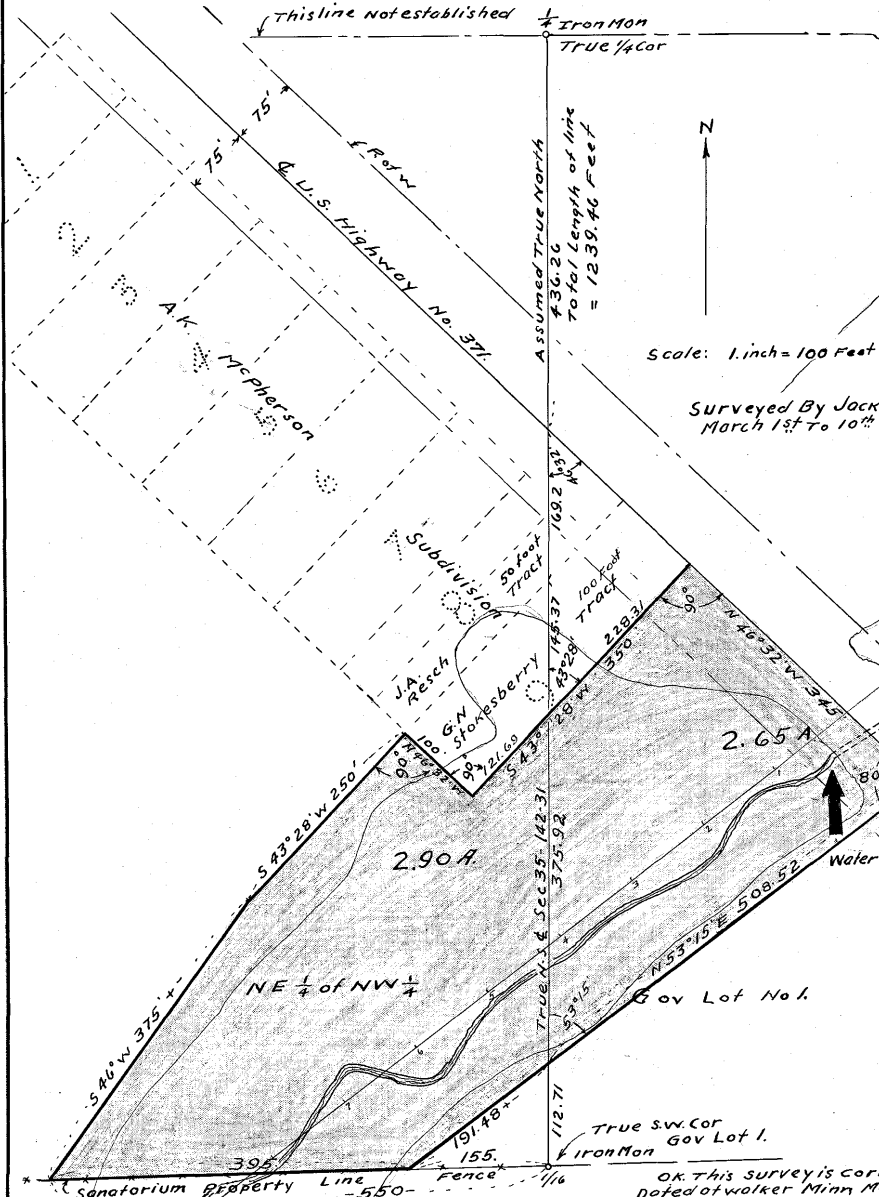
Walker Bureau Minn

McPherson

All in Sec 35 T142 R931
Cass Co Minn

This line not established

Iron Mon
True 1/4 Cor



Scale: 1 inch = 100 Feet

Surveyed By Jack Curo
March 1st to 10th 1939.

2.90 A

2.65 A

NE 1/4 of NW 1/4

Gov Lot No. 1

Sanatorium Property Line

Water control

True s.w. Cor
Iron Mon
Gov Lot 1.

OK This survey is correct
Dated at Walker Minn March 20-1939

John W. Curo

Dom.

#5866