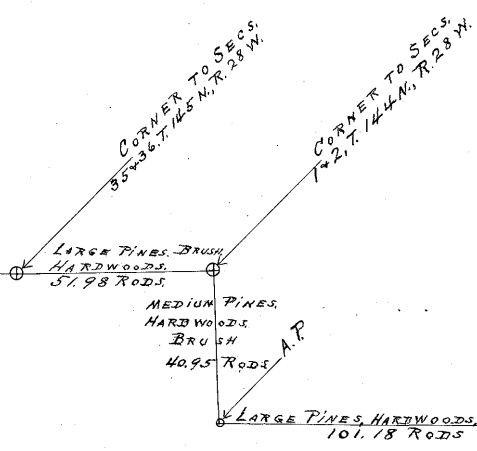
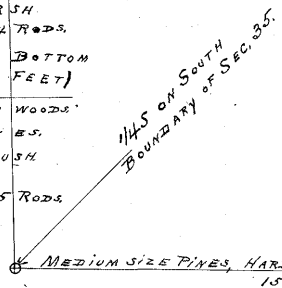


**Plat of**  
**Bena - Six Mile Lake**  
**Road,**  
 In Sec. 26 & 35, T. 145 N., R. 28 W.  
 Secs. 1 & 2, T. 144 N., R. 28 W.  
 Cass County,  
 Minnesota.  
 Scale, 1 Inch = 400 Feet.

Beginning at the corner to Secs. 26, 27, 34 & 35, T. 145 N., R. 28 W.; thence, Eastward along the line between Secs. 26 & 35, 2645.21 feet to the 1/4 S. corner between Secs. 26 & 35; thence, Southward along the quarter line in Sec. 35, 5238.32 feet to the 1/4 S. in the South boundary of Sec. 35; thence, Eastward along the South boundary of Sec. 35, 2624.19 feet to the corner to Secs. 35 & 36, T. 145 N., R. 28 W.; thence, Eastward along the North boundary of Sec. 2, T. 144 N., R. 28 W., 857.60 feet to the corner to Secs. 1 & 2, T. 144 N., R. 28 W.; thence, Southward along the line between Secs. 1 & 2, 675.72 feet to an Angle Post (A.P.); thence, East 1669.50 feet to the terminating point.

Va. 8°, 47' E.



RECORDED ON PAGES 37 and 17-18  
 ROAD CALENDAR 'A'