

5911

STATE ROAD

LD
Sections 26, 27, 34 + 35, T.137, R.30.
as surveyed by
F.W. MOULSTER,
PINE RIVER, MINN.



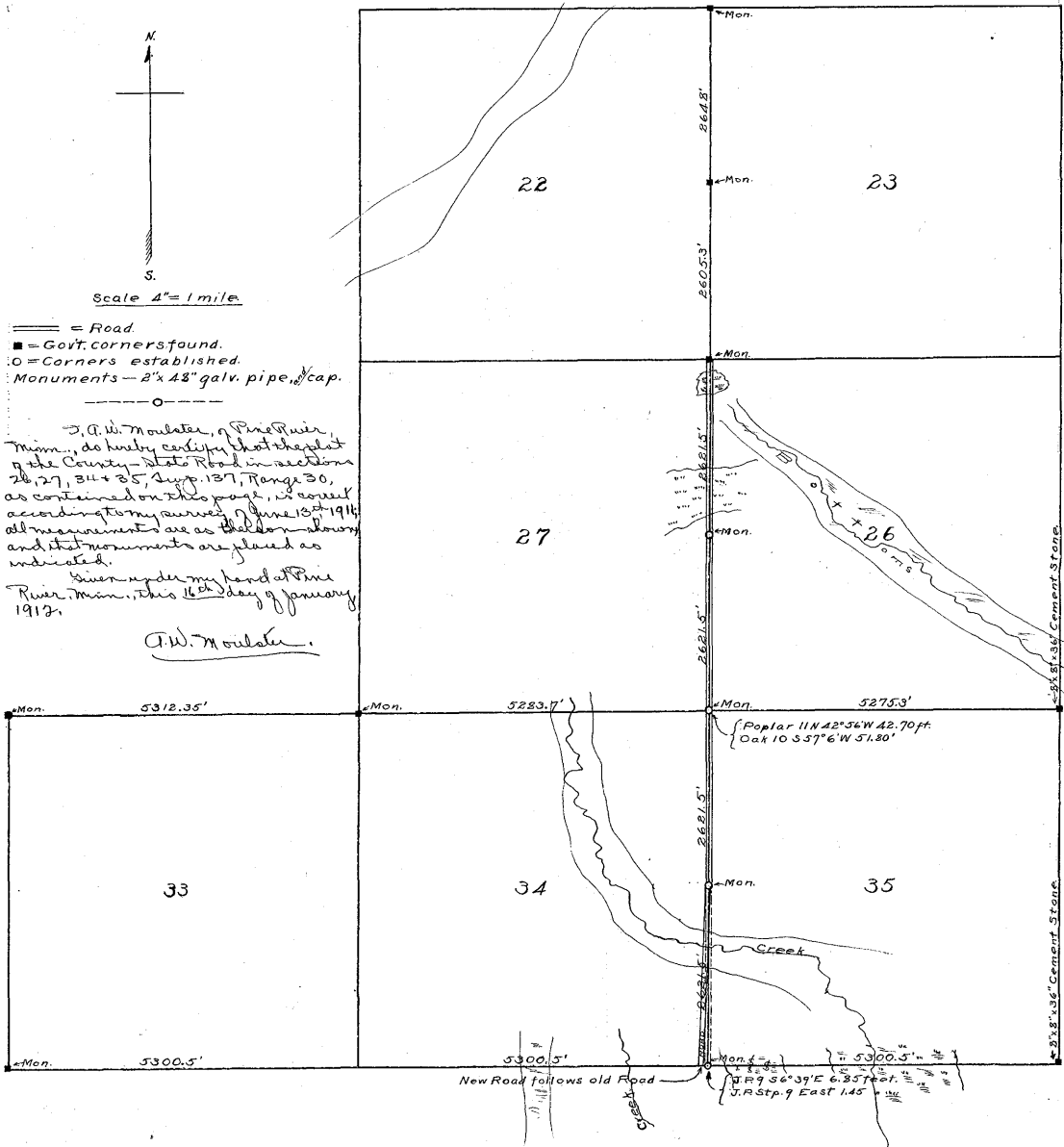
Scale 4" = 1 mile

- ==== = Road
- = Govt. corners found.
- = Corners established.
- Monuments - 2" x 48" galv. pipe, 1/2 cap.

J. A. W. Moulster, of Pine River, Minn., do hereby certify that the plat of the County State Road in sections 26, 27, 34 + 35, Supp. 137, Range 30, as contained on this page, is correct according to my survey of June 13th 1914; all measurements are as they show, and that monuments are placed as indicated.

Given under my hand at Pine River, Minn., this 16th day of January, 1917.

J. A. W. Moulster



#5854