

H.S.E

Plat I

of a Road known
 as
Halls Road
 Twp. 13 S. R. 30.
 Cass Co. Iowa;

Notes.

Road starts at angle point 1 (26 bearing true North on Meridian 154° 57' 10.3) at ch. 3.55

road of 1/4 Sec. Post on section line between sections 16 and 21 Twp. 13 S. R. 30.

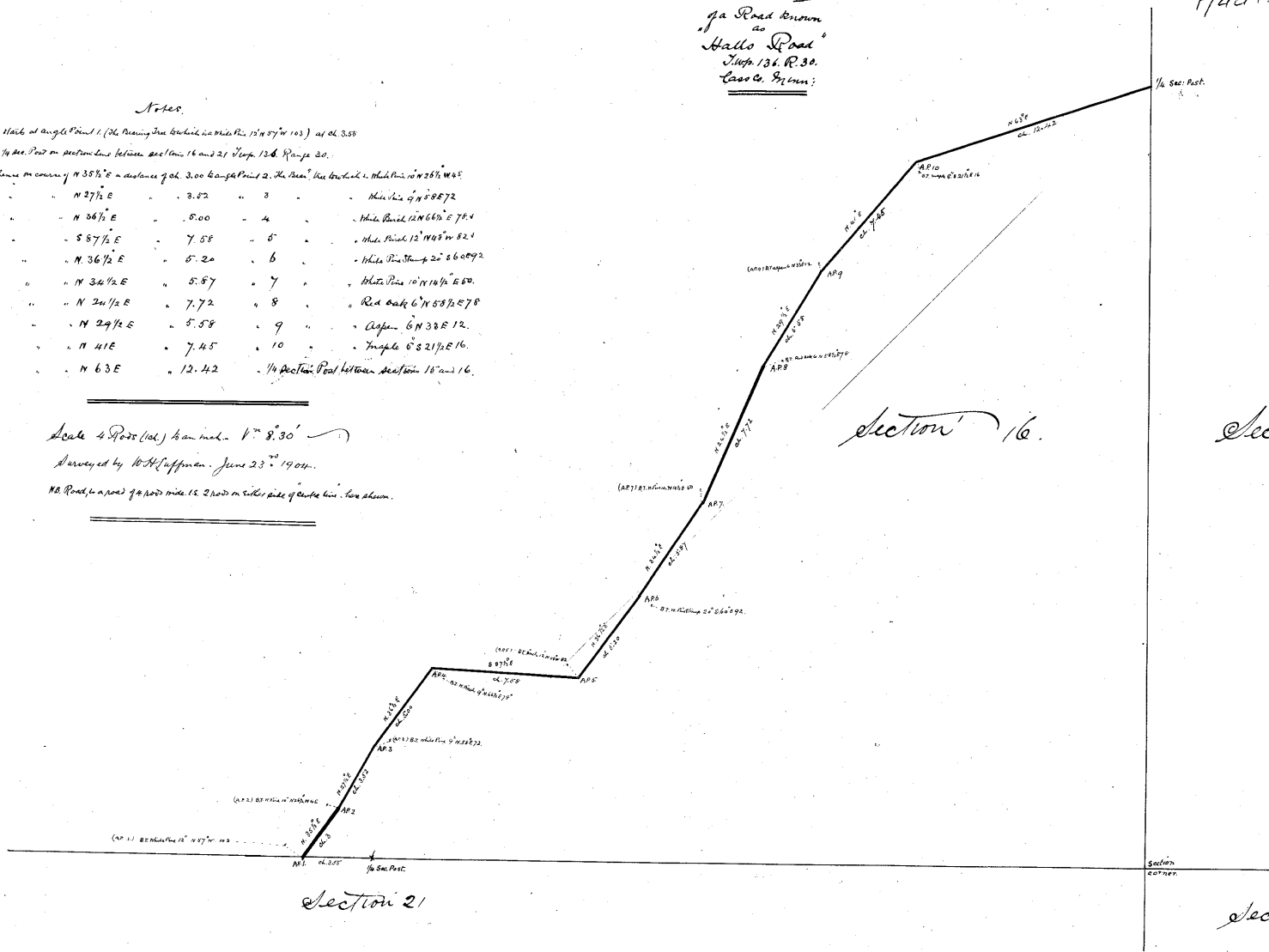
From thence on course of N 35 1/2° E a distance of ch. 200 to angle point 2. The bearing true North on Meridian is 152° 25' 10.45

ch.	Bearing	Distance	Station	Remarks
0	N 27 1/2° E	3.52	3	Angle Point 1 N 26 1/2° E 75.4
3.52	N 26 1/2° E	5.00	4	Angle Point 2 N 35 1/2° E 200
8.52	S 57 1/2° E	7.58	5	Angle Point 3 N 36 1/2° E 20
16.10	N 36 1/2° E	6.20	6	Angle Point 4 N 34 1/2° E 10
22.30	N 34 1/2° E	5.57	7	Angle Point 5 N 24 1/2° E 7.72
28.87	N 24 1/2° E	7.72	8	Angle Point 6 N 29 1/2° E 5.58
36.59	N 29 1/2° E	5.58	9	Angle Point 7 N 41° E 7.45
44.04	N 41° E	7.45	10	Angle Point 8 N 63° E 12.42
56.46	N 63° E	12.42	1/4 Section Post	between sections 16 and 16.

Scale 4 Rods (ch.) to an inch - V^o 8° 30'

Surveyed by W.H. Huffman, June 23rd 1904.

N.B. Road is a part of a road 1/4 mile (1/2 road) on either side of center line. See sketch.



Plat II

Notes on Plat II.

Road, being a continuation of Halls Road from 1/4 Section Post between sec. 15 and 16, runs on an east course (V^o 8° 08') from said Post through the center of section 15 to the 1/4 Section Post between sections 16 and 15, a distance of ch. 80.35, intersecting Halls road with an established road running north and south.

N.B. Road is likewise a part of a road 1/4 mile (1/2 road) on either side of center line. See sketch.

V^o 8° 08'

ch. 80.35