

R.100

# BUNGO ROAD

Townships 136-137 Ranges 30-31 County of Cass

I herewith submit a plat and description from actual survey in field. To be known the BUNGO ROAD in T137 R36 Range 31. Ordered by the Board of County Commissioners of Cass County.

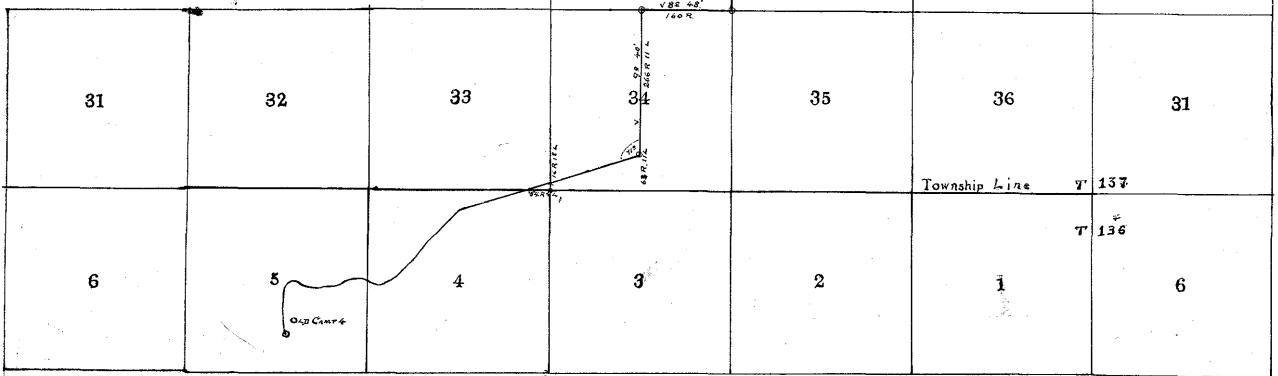
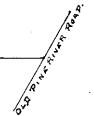
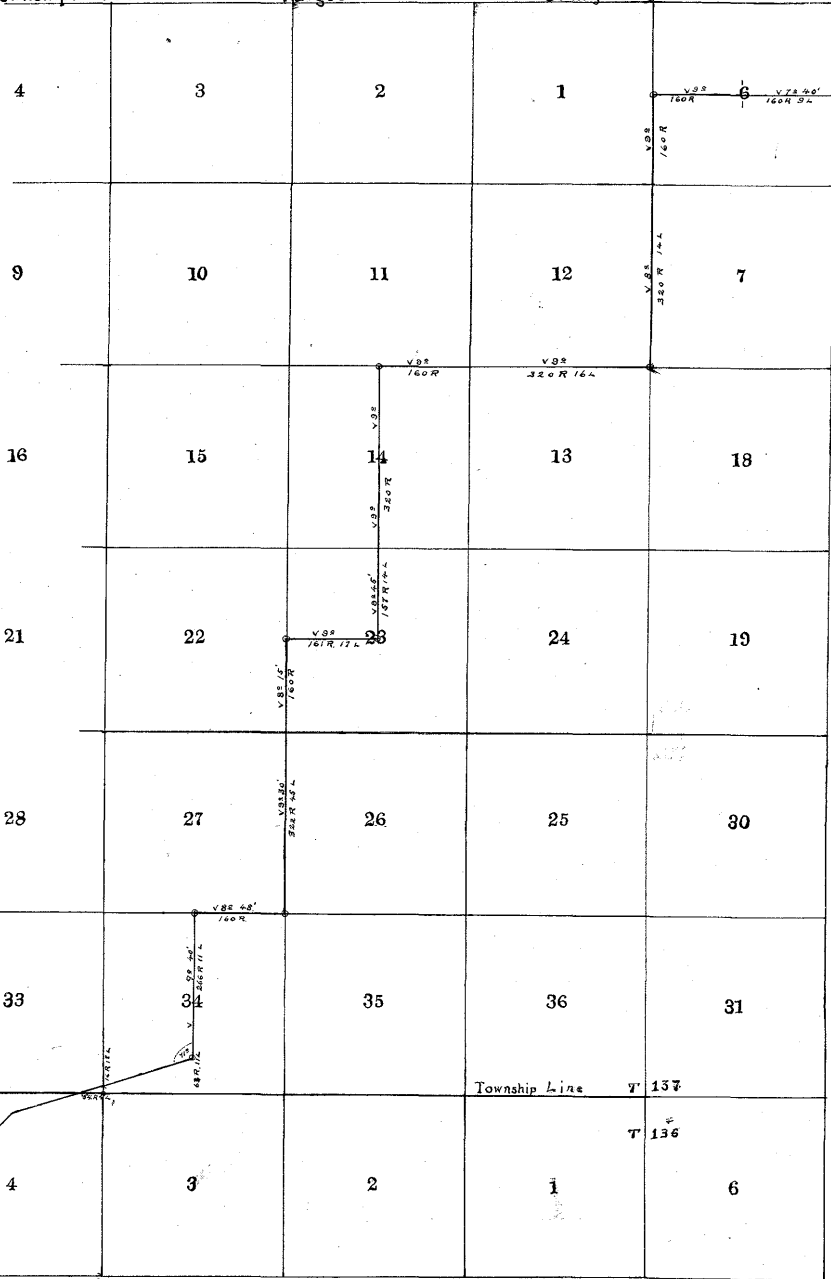
Commencing at Old Camp 4 in the S.W. of S.E. of Sec 5 T136 R31 Thence running north on an angle of 80° For 16 R 132

Thence N of N 9 Rds. 12 LINKS on an angle of 61°	
" " " 12 " " " " " 40°	
" " " 12 " " " " " 6°	
" " B 7 19 " " " " " 10°	
" " W " 22 " " " " " 23°	
" " " 34 " " " " " 27° 30'	
" " " 14 " " " " " 40° 30'	
" " " 24 " " " " " 75° 30'	
" " " 34 " " " " " 92° 30'	
" " " 8 " " " " " 58° 30'	
" " " 50 " " " " " 57°	
" " " 36 " " " " " 68°	
" " " 20 " " " " " 49° 30'	
" " " 20 " " " " " 33°	
" " " 66 " " " " " 15° 30'	
" " " 12 " " " " " 41°	
" " " 12 " " " " " 69° 30'	
" " " 40 " " " " " 75° 30'	
" " " 40 " " " " " 60° 30'	
" " " 40 " " " " " 59°	
" " " 40 " " " " " 69°	
" " " 32 " " " " " 68°	
" " " 38 " " " " " 44° 30'	
" " " 22 " " " " " 56°	
" " " 62 " " " " " 71°	

And there connect with 1/4 line of S34 running East and West 62 Rds North of 1/4 Cor Thence North to 1/4 Cor Between Sec 27 & 28 Thence East 1/2 mile to Sec Cor 26-27 34-35 Thence North 1/2 mile to 1/4 Cor Between 22-23 Thence East 1/2 mile to center of Sec 25 Thence North 1/2 mile to 1/4 Cor Between Sec 11-14 Thence East 1/2 mile to Sec Cor 12-13 T137 R31 and 7-10 in T137 R30 Thence North 1/2 mile to East 1/4 Cor Sec 1 Thence East on 1/4 line to old Pine River Road

WALKER DEC 31 1898

*James M. Garfield*  
County Surveyor



NOTE: THIS MAP IS NOT CORRECT BECAUSE IT DOES NOT SHOW THE LINE BETWEEN T136 AND T137 TO BE A CORRECTION LINE

RECORDED ON PAGES 20-21-81  
ROAD CALENDAR 'A'

#5850