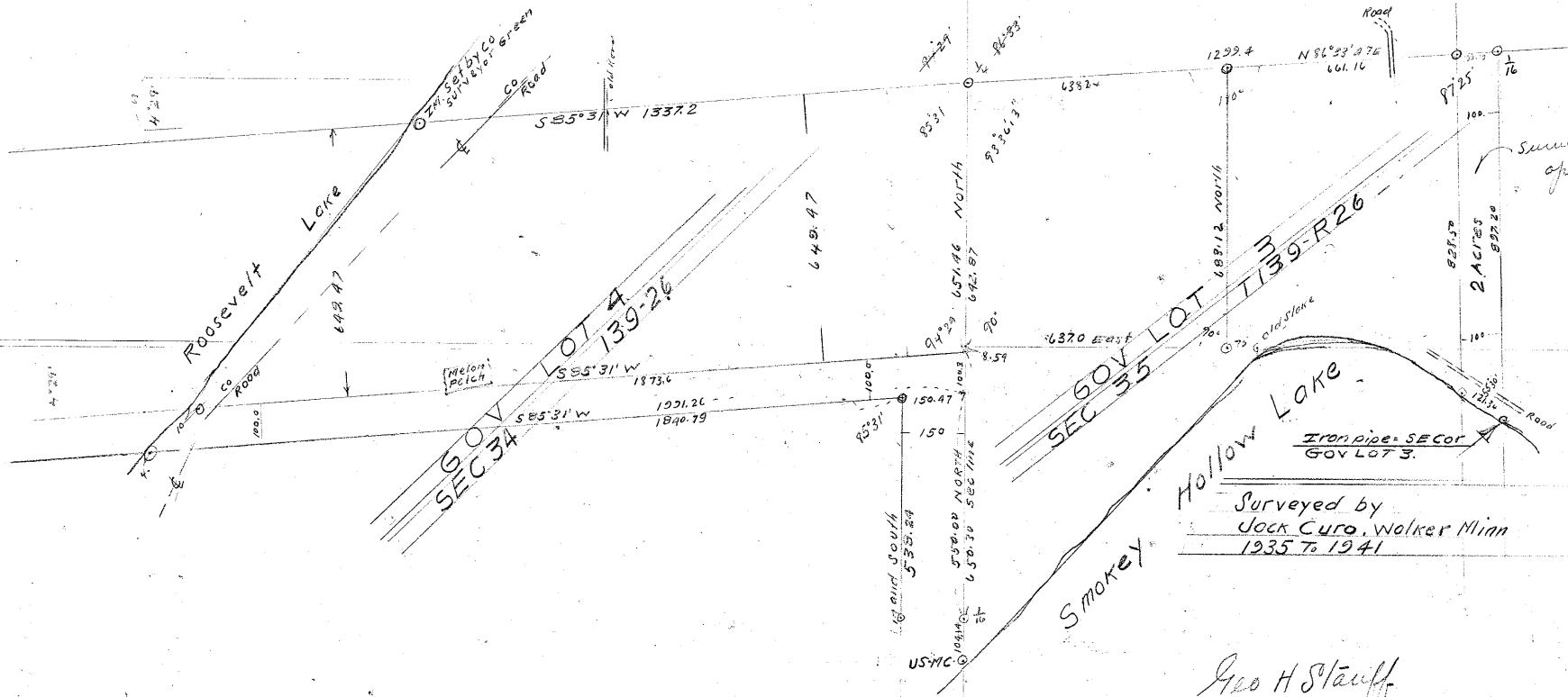


1840.79  
1390.47  
1971.26

632  
234  
77

8960 3°36'18"

62.37  
8.60  
651.47  
62.28  
8.57  
651.06



Surveyed this  
April 12-1941  
Curo

Surveyed by  
Jock Curo, Walker Minn  
1935 to 1941

Geo H Stauff  
1268 Marshall Ave  
St Paul, April 16-1941  
Curo

#5849

(1-B)