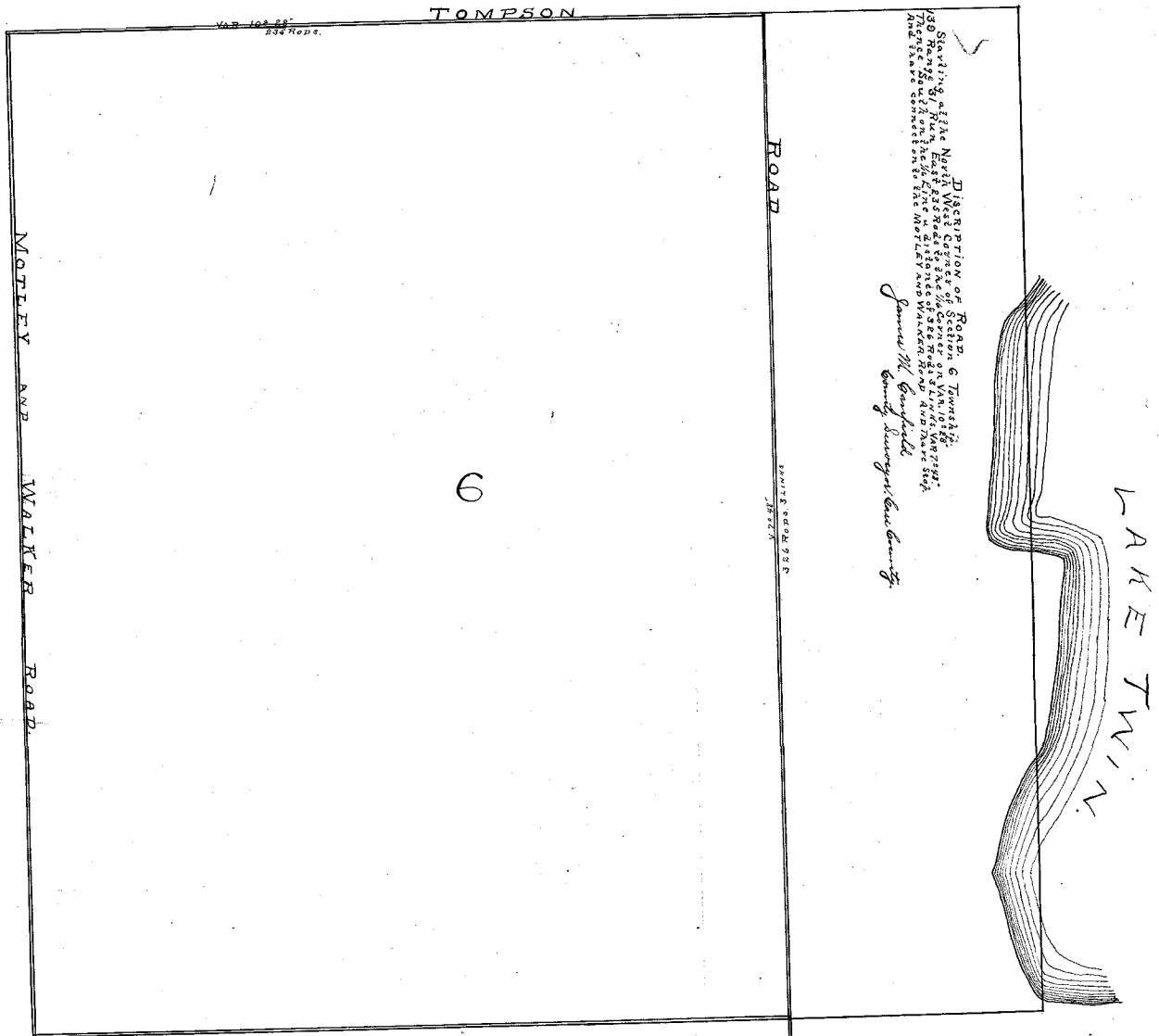


Copied in Auditor's
Road Record 'B'
Page 23-

R 2

PLAT OF
TOMPSON ROAD.
TOWNSHIP 139. SEC. 6. RANGE E. 31.
SCALE 12 IN = 1 MILE.



DESCRIPTION OF ROAD, 6 Townships.
Starting at the North West Corner of Section 36, Township 139 Range 31 East and following the distance of 388 rods all along the West Line of Section 36 to the Mottley and Walker Road in the North East Corner of the Mottley and Walker Road.

James M. Garfield
County Surveyor Cass County

Var. 102.58°
234 Rods.

RECORDED ON PAGES 42-72
ROAD CALENDAR 'A'

#5840