

NORTH LINE OF NW 1/4 - NE 1/4
LINE NW 1/4 - NE 1/4

PLAT OF SURVEY
PARTS OF GOVT LOT 4
AND NW 1/4 NE 1/4 SEC 26
T 139N R 26W

89°52'27"E
300.04

NW COR. OF W 1/2
NE 1/4 SEC 26

697.65

150.02

150.02

2722.65

97.27

2503.78

2534.29

2596.77

2982.10

2931.72

2361.26

2641.78

2503.78

2596.77

2982.10

2931.72

NE 1/4

NW 1/4

LOT 4

GOVT

LOT 4

WEST LINE OF EAST 600.00 FEET OF W 1/2 - NE 1/4

5°02'16"E

600.00

5°02'16"E

600.00

600.00

WEST LINE OF W 1/2 - NE 1/4



SCALE 1" = 100'
BEARINGS ASSUMED
● IRON MON IN PLACE
○ 1/2" IRON PIPE MON STAMPED
1/1386 ESTABLISHED

WEST 300.00 FEET OF W 1/2 - NE 1/4 SEC 26

EAST 150.00 FEET OF WEST

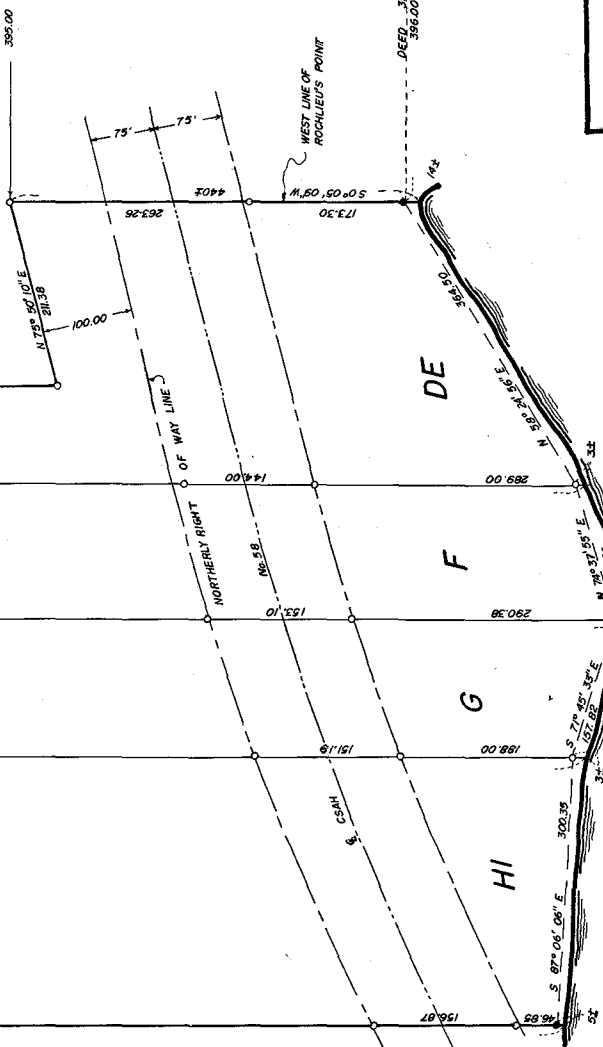
EAST 150.00 FEET OF WEST

EAST 150.00 FEET OF WEST

EAST 150.00 FEET OF WEST

EAST 150.00 FEET OF WEST

EAST LINE OF GOVERNMENT LOT 4



Robt. E. Coe
DATE 2-1-77 REG NO. 12395
5813