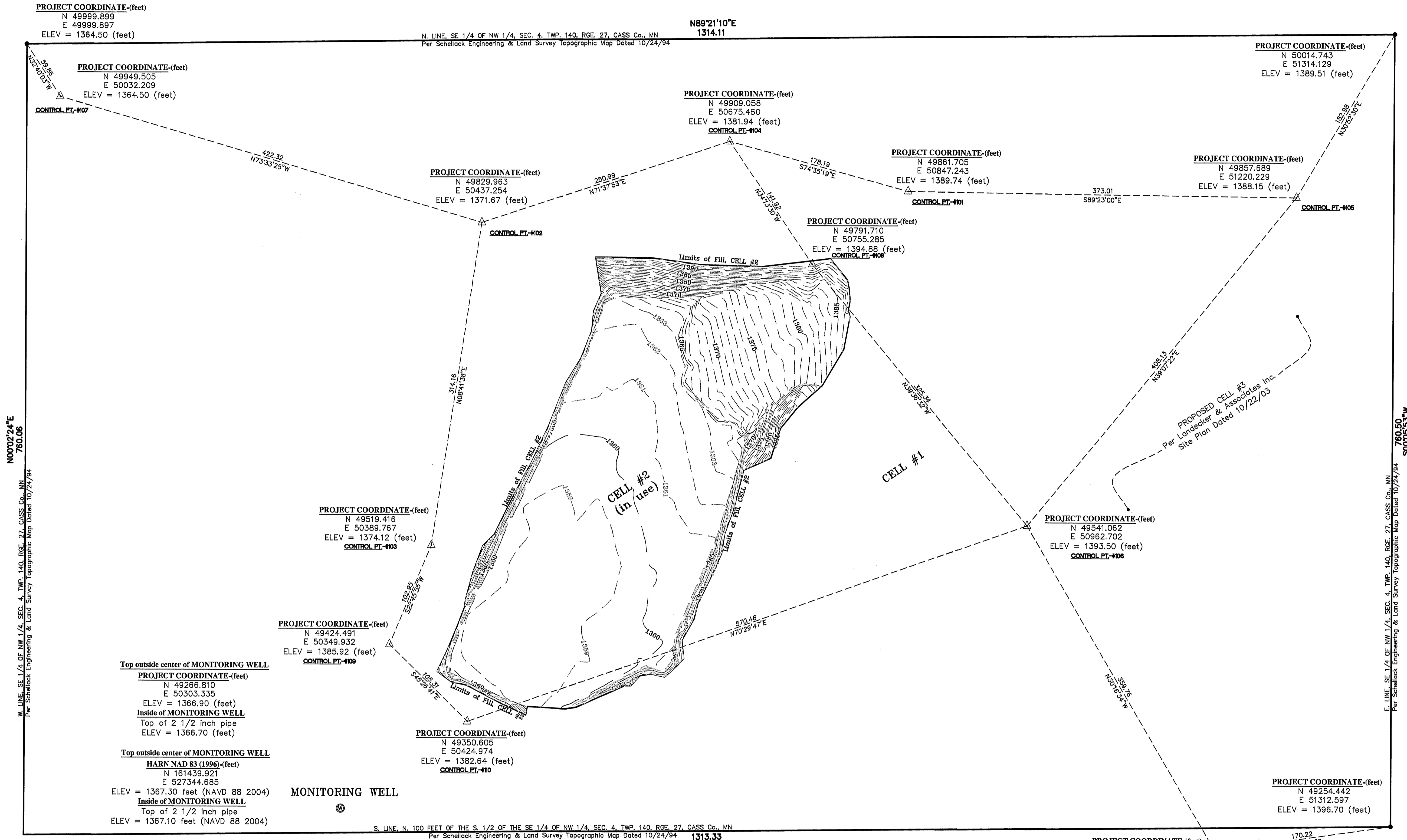


# CERTIFICATE OF SURVEY

RECEIVED  
# 5803  
FEB 9 2012  
SE-MN 4-140-27  
CASS COUNTY SURVEYOR



I hereby certify that this survey, plan or report was prepared by me or under my direct supervision and that I am a duly licensed land surveyor under the laws of the state of Minnesota.  
Dated this 27th day of January, 2012.  
By: *Bruce W. Skipton*  
Bruce W. Skipton, Minnesota License No. 17768



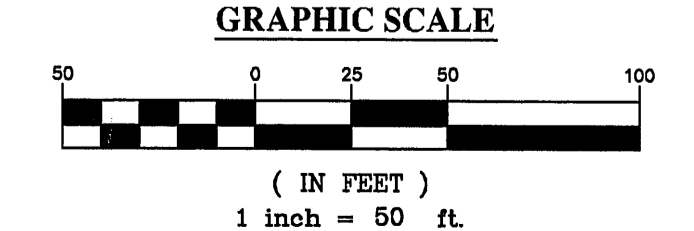
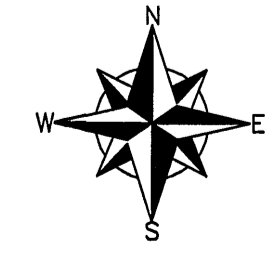
**CELL #2  
EXISTING CONDITIONS SURVEY  
SLAGLE DEMOLITION LANDFILL**  
N 1/2 OF SE 1/4 OF NW 1/4 & THE N 100 FEET  
OF THE S 1/2 OF THE SE 1/4 OF THE NW 1/4  
SEC. 4, TWP. 140, RGE. 27, CASS Co. MN.

**CLIENT:**  
Gary Slagle  
3188 46th St. NE  
Remer, MN 56672

DESIGNED BY:	DRAWN BY:	ISSUED

**SURVEYOR NOTES:**  
1. The site benchmark shown was located per Schellack Engineering and Land Surveying Topographic Map prepared for the Slagle Demolition Landfill dated 10/24/1994. No datum specified.  
2. Project Coordinates were established by Schellack Engineering and Land Surveying Topographic Map prepared for the Slagle Demolition Landfill dated 10/24/1994.  
3. The topography survey was completed on 1/4/12.  
4. Arro Land Surveyors, LLC calculated a fill volume of 3,974 cubic yards using as a base the contour surface for Cell 2 as shown on the Certificate of Survey dated January 16, 2007 and the contours generated from our topography field survey dated January 4, 2012. This calculation does not factor in compaction.

**LEGEND**  
• DENOTES FOUND SURVEY MONUMENT  
△ DENOTES CONTROL POINT SET WITH 1/2 INCH IRON PIPE WITH MN LAND SURVEYORS LICENSE NO. 17768  
-1380- DENOTES EXISTING 5-FOOT CONTOUR INTERVAL  
- DENOTES EXISTING 1-FOOT CONTOUR INTERVAL



○ SITE BENCHMARK  
Spike in base of 8 inch Maple Tree, Elevation 1395.50 (feet)

W. LINE, SE 1/4 OF NW 1/4, SEC. 4, TWP. 140, RGE. 27, CASS Co., MN  
Per Schellack Engineering & Land Survey Topographic Map Dated 10/24/94  
760.06  
N00°02'24"E

E. LINE, SE 1/4 OF NW 1/4, SEC. 4, TWP. 140, RGE. 27, CASS Co., MN  
Per Schellack Engineering & Land Survey Topographic Map Dated 10/24/94  
760.50  
S00°05'53"W

S. LINE, N. 100 FEET OF THE S. 1/2 OF THE SE 1/4 OF NW 1/4, SEC. 4, TWP. 140, RGE. 27, CASS Co., MN  
1313.33  
S89°22'17"W  
Per Schellack Engineering & Land Survey Topographic Map Dated 10/24/94

PROJECT COORDINATE-(feet)  
N 49999.899  
E 49999.897  
ELEV = 1384.50 (feet)

PROJECT COORDINATE-(feet)  
N 49949.505  
E 50032.209  
ELEV = 1364.50 (feet)

N89°21'10"E  
1314.11

PROJECT COORDINATE-(feet)  
N 50014.743  
E 51314.129  
ELEV = 1389.51 (feet)

PROJECT COORDINATE-(feet)  
N 49909.058  
E 50675.460  
ELEV = 1381.94 (feet)  
CONTROL PT. #104

PROJECT COORDINATE-(feet)  
N 49861.705  
E 50847.243  
ELEV = 1389.74 (feet)

PROJECT COORDINATE-(feet)  
N 49857.689  
E 51220.229  
ELEV = 1388.15 (feet)

PROJECT COORDINATE-(feet)  
N 49829.963  
E 50437.254  
ELEV = 1371.67 (feet)

PROJECT COORDINATE-(feet)  
N 49791.710  
E 50755.285  
ELEV = 1394.88 (feet)  
CONTROL PT. #108

PROJECT COORDINATE-(feet)  
N 49519.416  
E 50389.767  
ELEV = 1374.12 (feet)  
CONTROL PT. #103

PROJECT COORDINATE-(feet)  
N 49541.062  
E 50962.702  
ELEV = 1393.50 (feet)  
CONTROL PT. #106

PROJECT COORDINATE-(feet)  
N 49424.491  
E 50349.932  
ELEV = 1385.92 (feet)  
CONTROL PT. #109

PROJECT COORDINATE-(feet)  
N 49350.605  
E 50424.974  
ELEV = 1382.64 (feet)  
CONTROL PT. #110

**Top outside center of MONITORING WELL**  
PROJECT COORDINATE-(feet)  
N 49266.810  
E 50303.335  
ELEV = 1366.90 (feet)  
**Inside of MONITORING WELL**  
Top of 2 1/2 inch pipe  
ELEV = 1366.70 (feet)

**Top outside center of MONITORING WELL**  
HARN NAD 83 (1996)-(feet)  
N 161439.921  
E 527344.685  
ELEV = 1367.30 feet (NAVD 88 2004)  
**Inside of MONITORING WELL**  
Top of 2 1/2 inch pipe  
ELEV = 1367.10 feet (NAVD 88 2004)

**MONITORING WELL**