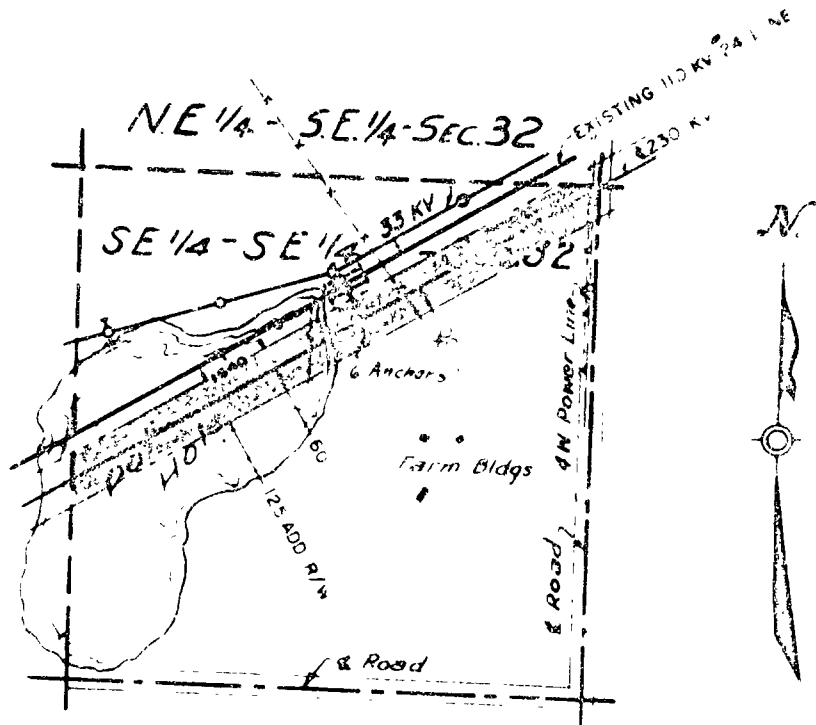


32-134-29

BASED TO INCL 3RD LINE 3-21-07 JWK



230 KV TRANSMISSION  
 &  
 110 K V TRANSMISSION  
 THROUGH  
 SE 1/4 - SE 1/4 SEC 32  
 T 134 N - R 29 W  
 MINNESOTA POWER & LIGHT CO  
 (SOUTH MINNESOTA)

SCALE 1" = 40'      OCT 29, 1947  
 APPROVED

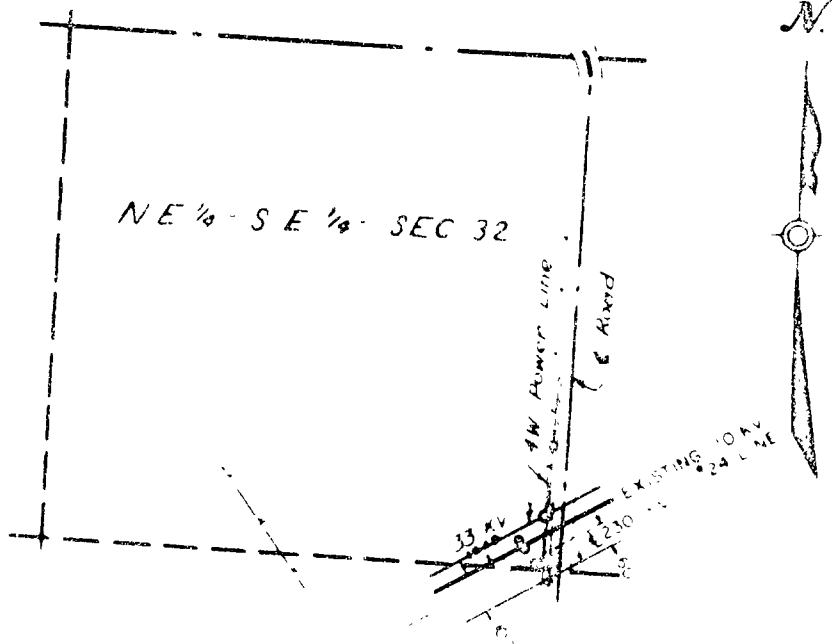
CHIEF ENG  
 MA-12319

REVISED BY  
 DATE BY  
 CHECKED BY  
 SUBJECT  
 3/26 10/1 1947

ASS CO

5-5-65

REVISED TO NCL 3RD LINE 3-21-67 JWK



1957

230 KV TRANSMISSION  
 &  
 110 KV TRANSMISSION  
 THROUGH  
 NE 1/4 SE 1/4 SEC 32  
 T 134 N — R 29 W  
 MINNESOTA POWER & LIGHT CO

OCT 29 1967

CHIEF ENGR  
MA-12320