

CERTIFICATE of SURVEY

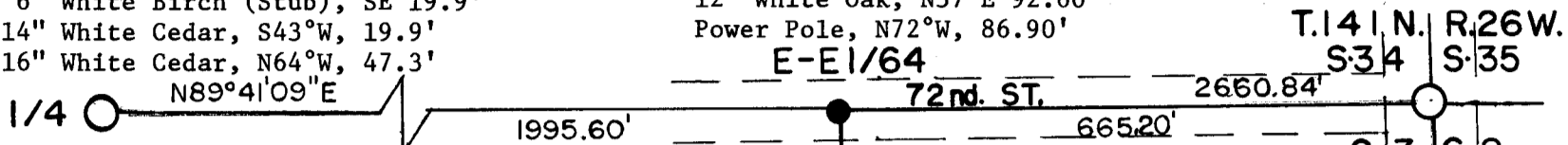
BEING THE E1/2NE1/4NE1/4, SECTION 3, TOWNSHIP 141 NORTH,
RANGE 26 WEST OF THE 5TH PRINCIPAL MERIDIAN
CASS COUNTY, MINNESOTA

Ties:

6" White Birch (Stub), SE 19.9'
14" White Cedar, S43°W, 19.9'
16" White Cedar, N64°W, 47.3'
N89°41'09"E

Ties:

12" White Oak, N37°E 92.60'
Power Pole, N72°W, 86.90'



T.141N. R.26W.
S34 S35
S.3 S.2
T.141N. R.26W.



E1/2NE1/4NE1/4

HIGHWAY NO.130
COUNTY
Ties: (Sec. Cor.)
14" Red Pine, N67°E, 69.89'
8" Tamarack, S70°E, 83.87'
24" Basswood (Dead), S36°E, 126.80'
10" White Oak, N70°W, 166.31'

LEGEND

- - Found GLO Monuments With Bearing Trees
- - Set 1" Iron Pipes

Bearings from 1977 Forest Service Survey

SCALE: 1" = 200'

C-E-NE1/64 N89°28'06"E 663.62' NW1/6

Surveyors Affidavit:

I, Milo E. Stefan, a registered land surveyor in the State of Minnesota (RLS #12261), and at the request of James Watkins, have surveyed and marked the monuments to the E1/2NE1/4NE1/4 of Section 3, T.141N.,R26W. I certify that I have surveyed and marked this parcel and that this plat drawing is a true and correct representation of the lands surveyed and marked to the best of my abilities.

Milo E. Stefan
Milo E. Stefan
RLS #12261

8/23/03
Date



Ties:
6" White Birch, S30°E
6" Tamarack, S38°W, 21.67'



JAN 12 2004