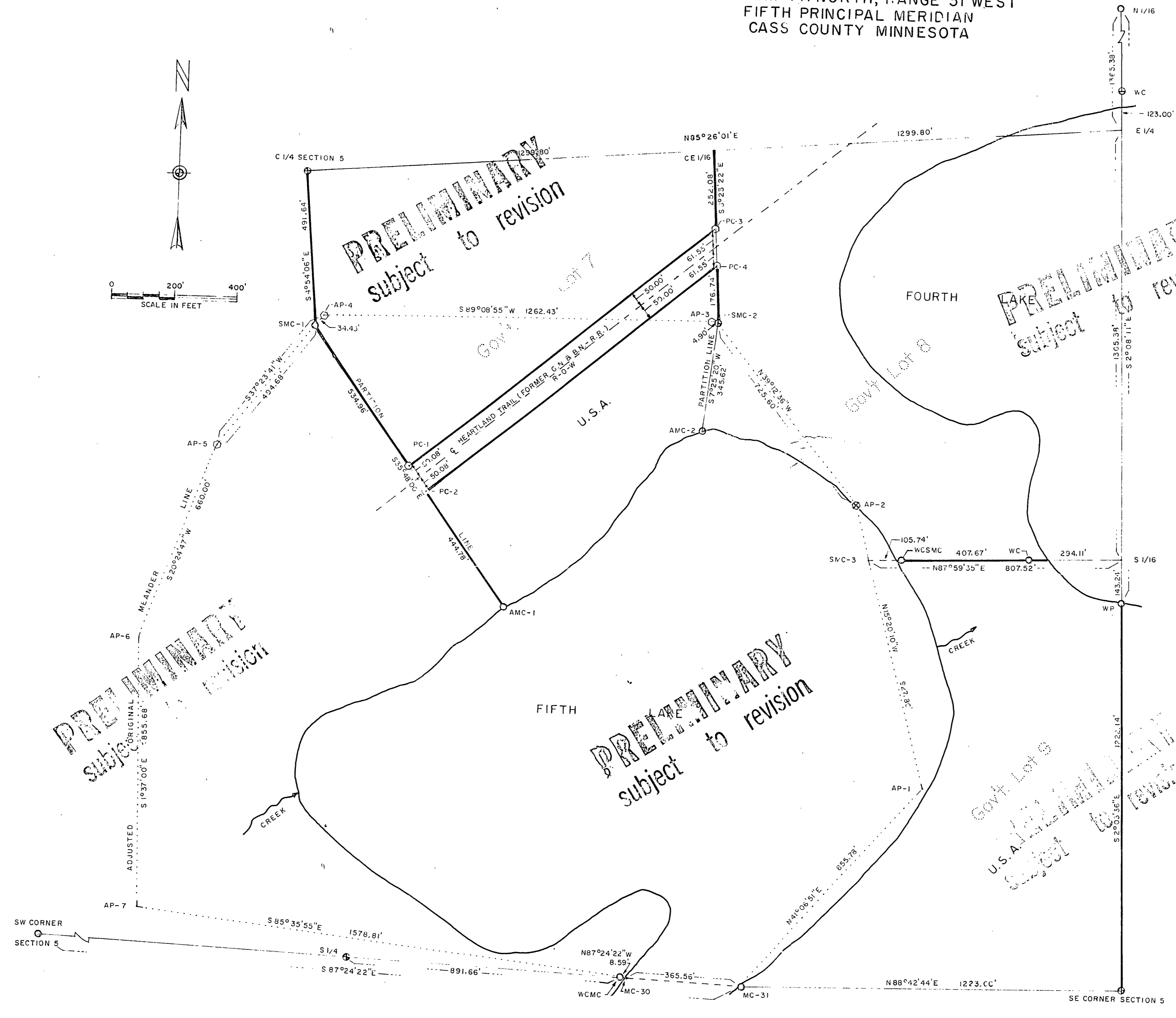
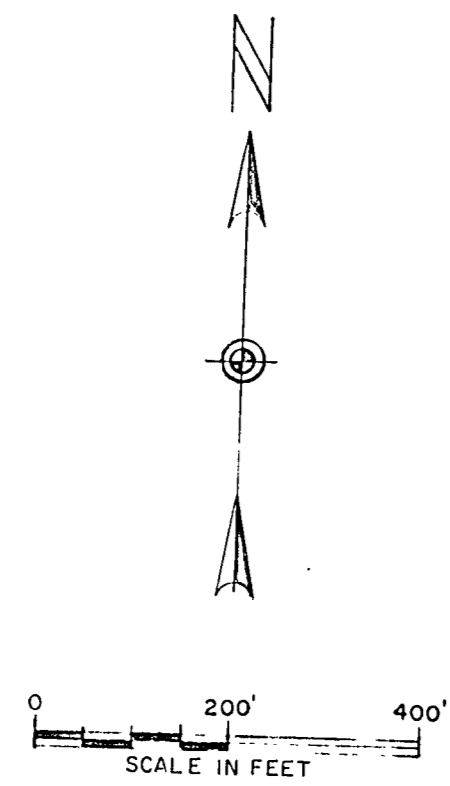


PLAT OF SURVEY
U.S. GOVERNMENT LAND

BEING THE SW 1/4 SW 1/4, SW 1/4 NE 1/4 GOVT. LOT 1,
GOVT. LOT 2, GOVT. LOT 3, GOVT. LOT 4, GOVT.
LOT 9 AND PART OF GOVT. LOT 7 OF SECTION 5
TOWNSHIP 141 NORTH, RANGE 31 WEST
FIFTH PRINCIPAL MERIDIAN
CASS COUNTY MINNESOTA



PRELIMINARY
subject to revision

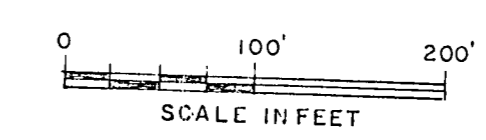
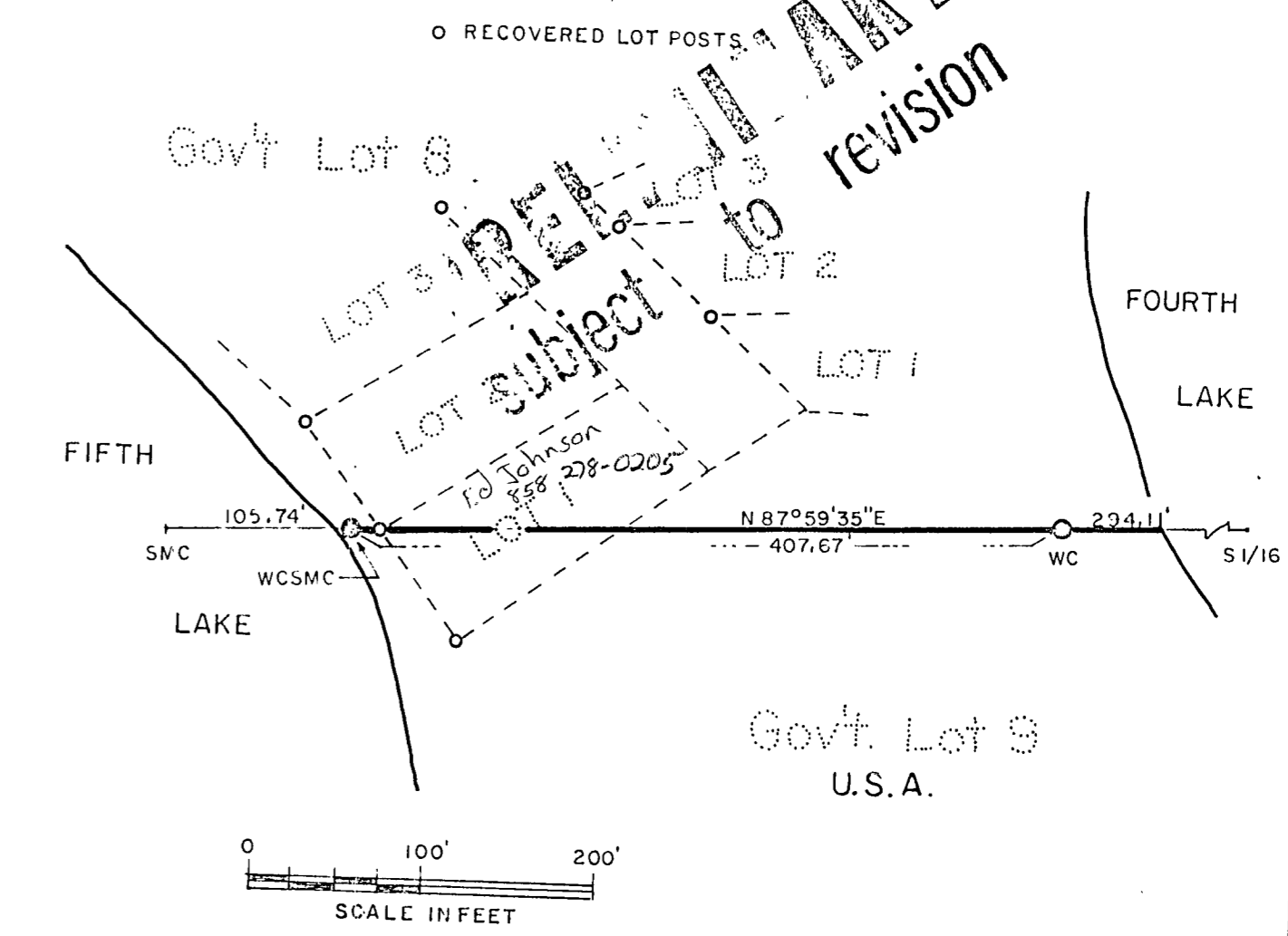
PRELIMINARY
subject to revision

PRELIMINARY
subject to revision

PRELIMINARY
subject to revision

PRELIMINARY
subject to revision

APPARENT LOCATION OF LOT LINES OF THE UNRECORDED
PLAT OF "CHASE 5th & 6th LAKES SUBDIVISION"



RECEIVED
NOV 16 1999
COUNTY SURVEYOR