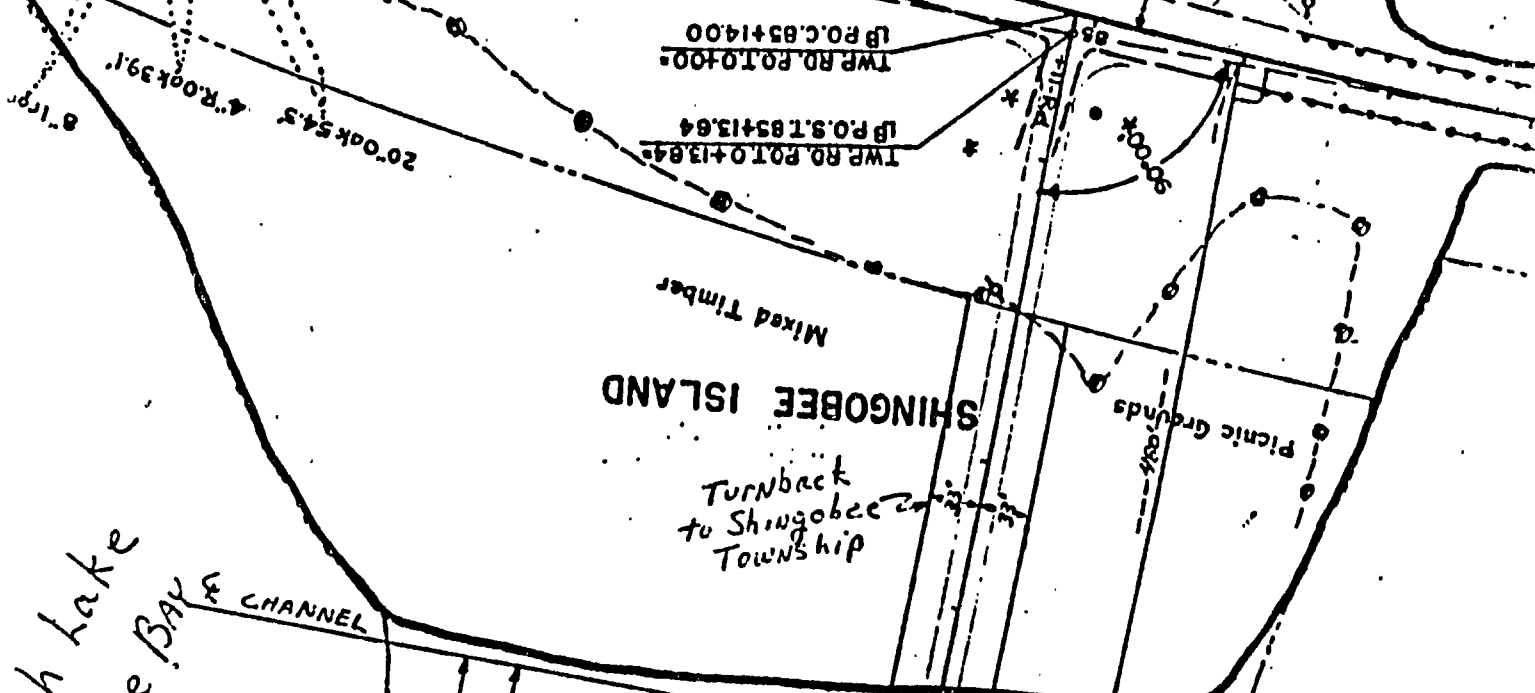
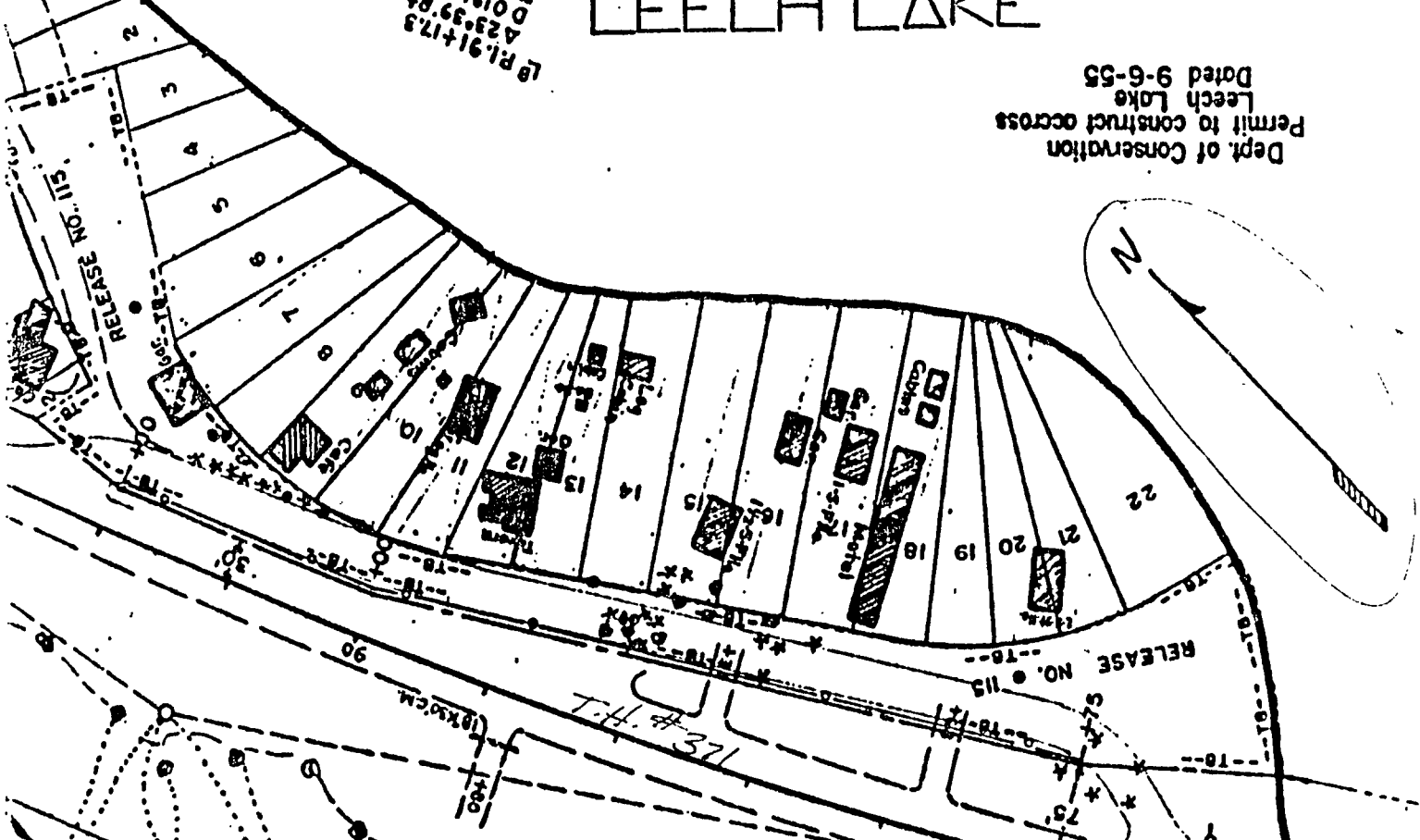
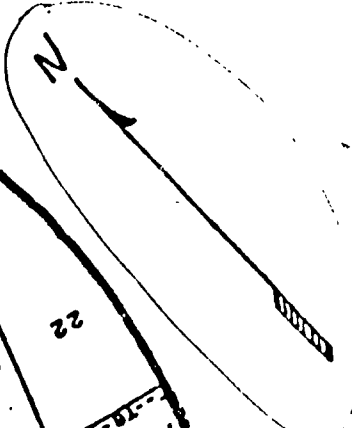


LEECH LAKE

Dept. of Conservation
Permit to construct across
Leech Lake
Dated 9-6-55

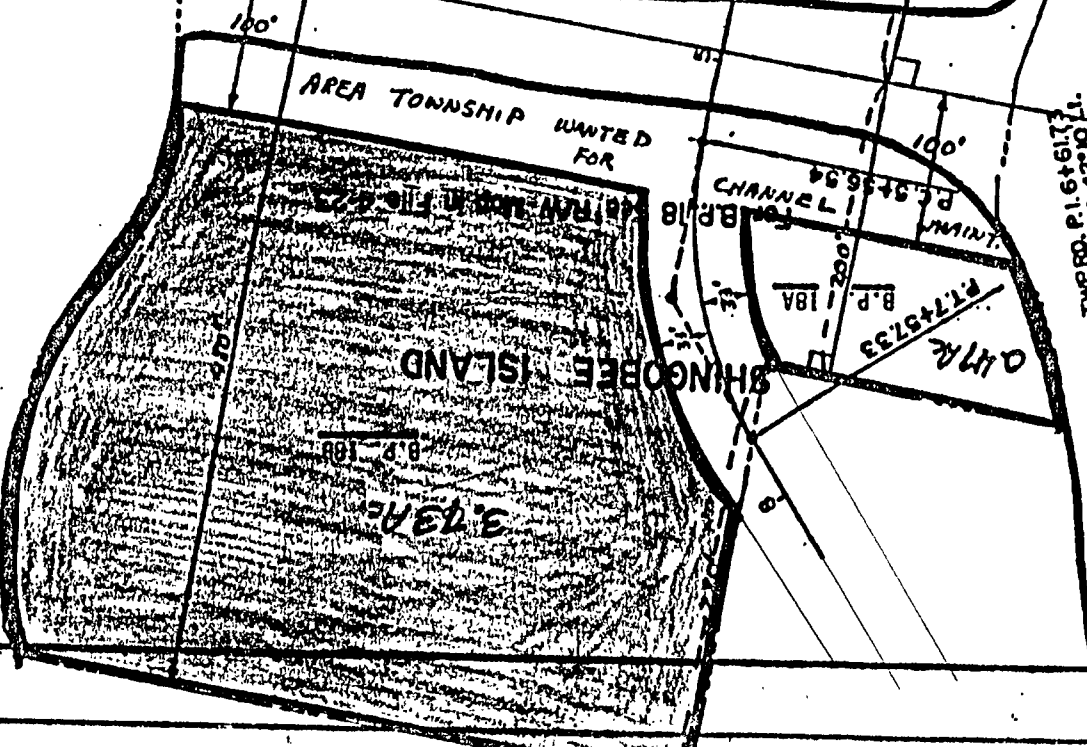
LB P.L. 91+17.8
A 23+39.84
O 01+15.7
T 959.7
L 1892.0



Leech Lake
Shingobee Bay

Leech Lake
Shingobee B.

SALE OF SURPLUS R/M
S.P. 1119 (371-34)
B. P. 18A and 18B



TWP. RD. P. 1.6+61.7
O 2100.
T 10519.
L 20079.
R 272.84