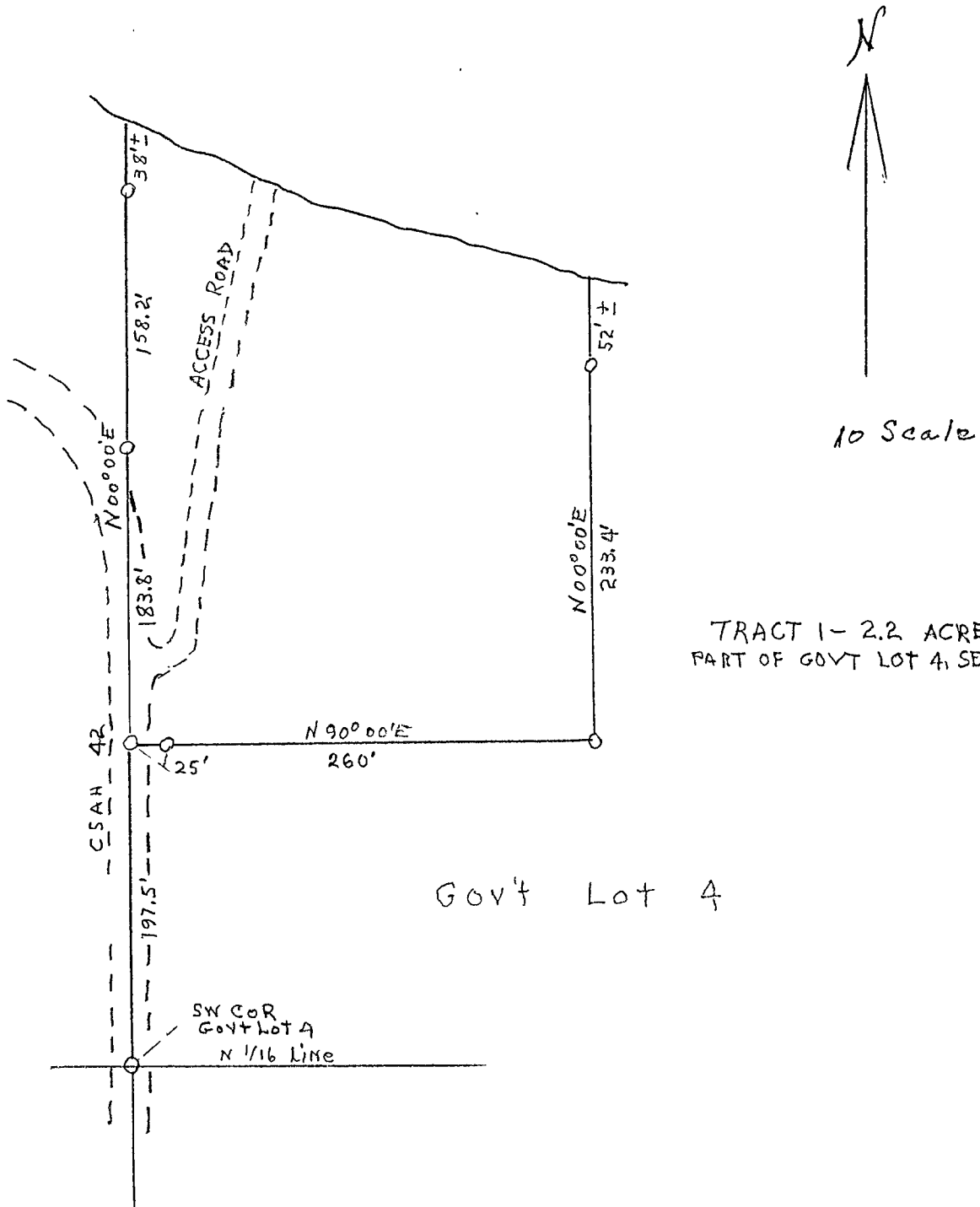
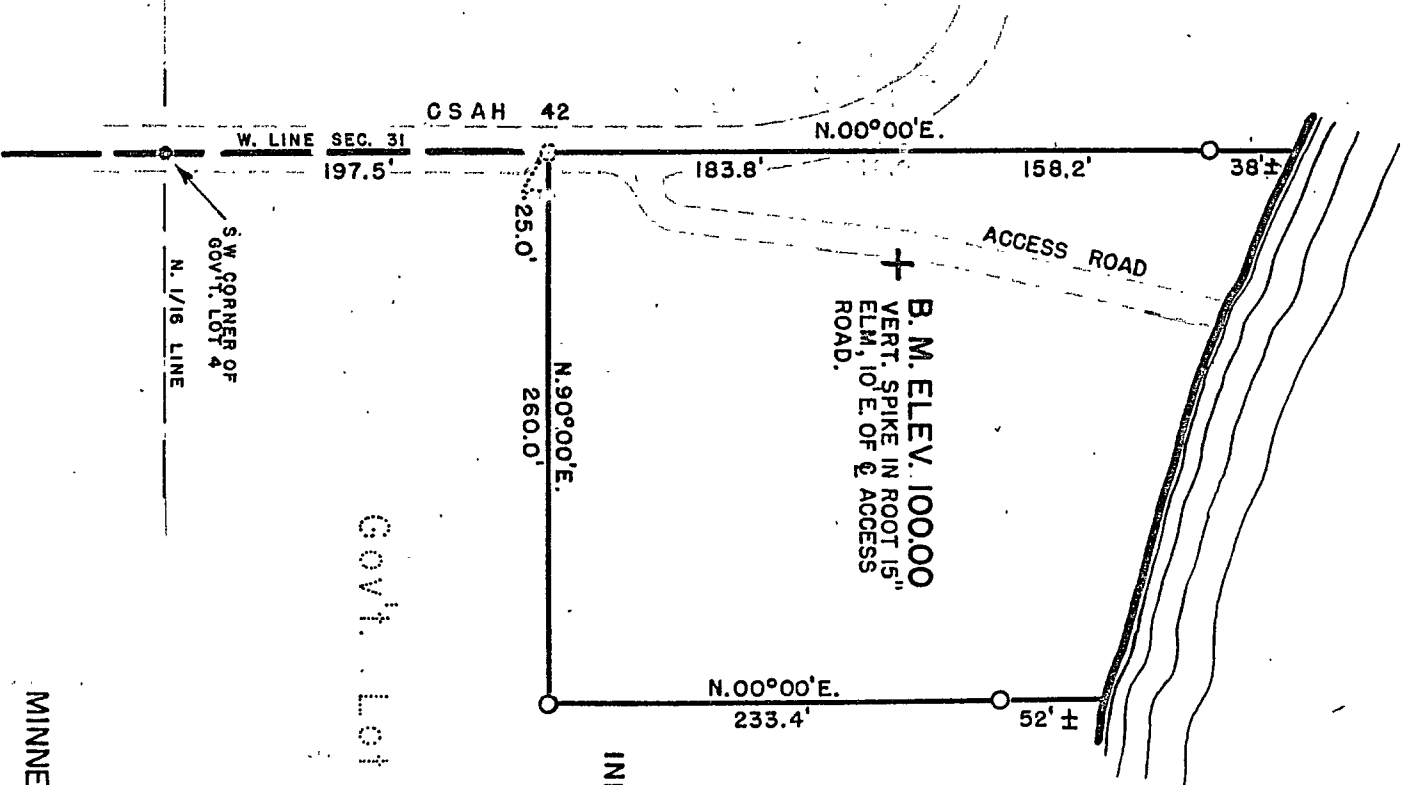


NORWAY LAKE PUBLIC ACCESS  
CASS CO - NEAR PINE RIVER  
Govt Lot 4 31-138-29

NORWAY LAKE



**NORWAY LAKE**  
 551 ACRES  
 W. S. ELEV. 97.45  
 (10-4-61)



TRACT 1 - 2.2 ACRES  
 PART OF GOV'T. LOT 4, SEC. 31,  
 INDEPENDENT SCHOOL DISTRICT 117  
 OCTOBER 4, 1962  
 BOOK 71 PAGE 610  
 DOCUMENT 171231

MINNESOTA CONSERVATION DEPARTMENT  
 DIVISION OF GAME & FISH  
 PROPERTY MAP  
**NORWAY LAKE PUBLIC ACCESS**  
 CASS CO. - NEAR PINE RIVER

SEC. 31 T. 138 N. R. 29 W. 5TH P.M.  
 DRAWN BUREAU SURVEY  
 DAD 10-13-61 KMN OCT. 61  
 CHECKED ENGINEERING  
 AGC 10-19-61  
 REVISED  
 10-23-61 CHIEF ENGR.  
 REQ. 61-124  
 FILE A-119

LAND DESCRIPTION  
 NORWAY LAKE PUBLIC ACCESS 445 (G-803)  
 CASS COUNTY - NEAR PINE RIVER  
 TRACT 1 - INDEPENDENT SCHOOL DISTRICT 117

All that part of Gov't Lot 4, Sec. 31, Twp. 138 N., R. 29 W. of the 5th P.M., bounded by the west line of said Gov't Lot 4, the water's edge of Norway Lake and the following described lines;

Beginning at a point on the west line of said Gov't Lot 4, 197.5 ft. north from the southwest corner thereof; And from which the southwest corner of said Gov't Lot 4 bears S. 00° 00'E. from the point of beginning;

Thence N. 90° - 00' E. - 265.0 ft.  
 Thence N. 00° - 00' E. - 285.4 ft. more or less to the water's edge of Norway Lake and there terminating;

Including all Riparian Rights to the contained 2.2 acres more or less and subject to existing road easements.

RJO:reg  
 10-23-61  
 Checked - DAD - 10-23-61