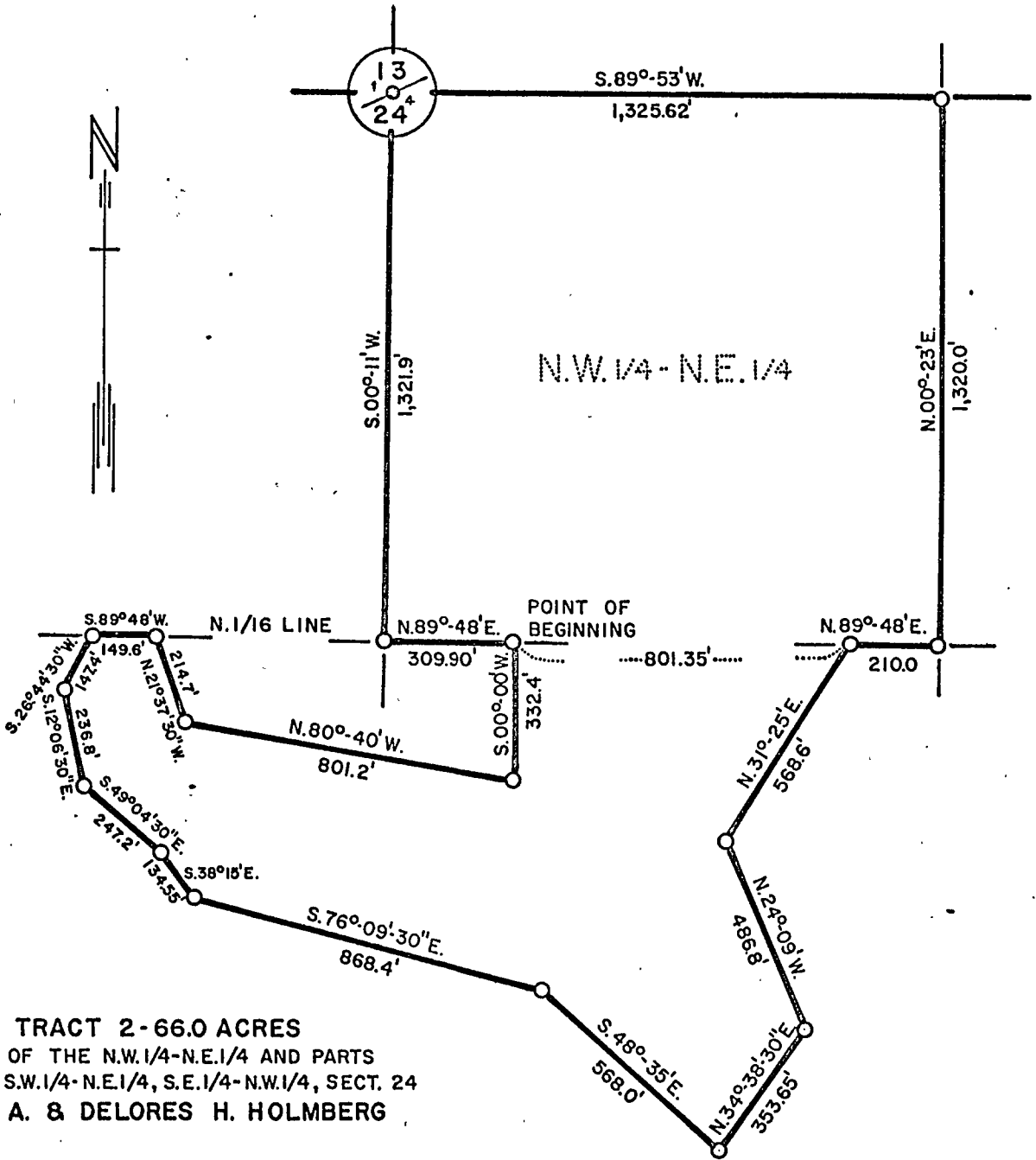
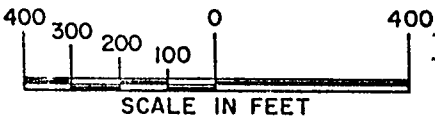


24-140-30



TRACT 2 - 66.0 ACRES
 ALL OF THE N.W.1/4-N.E.1/4 AND PARTS
 OF THE S.W.1/4-N.E.1/4, S.E.1/4-N.W.1/4, SECT. 24
 GUS A. & DELORES H. HOLMBERG



- IRON MARKER IN PLACE
- CONSERVATION MARKER SET

JUL 20 1965		
MINNESOTA CONSERVATION DEPARTMENT DIVISION OF GAME & FISH		
WEBB LAKE SPAWNING AREA CASS COUNTY - NEAR HACKENSACK		
SEC. 24	T. 140 N. R. 30 W.	5 TH. P.M.
DRAWN GLC 6-29-65	BUREAU OF ENGINEERING	SURVEY R.F. SCHNEIDER NO. 5740
CHECKED MWR 7-8-65		DATUM
REVISED	<i>R. J. ...</i> 7-7-65 CHIEF ENGR.	
REQ. 64-90	SHEET 2 OF 2	FILE E-617-Y