

W. VAERST

Rec'd from Vaerst 12/6/72

27-140-26

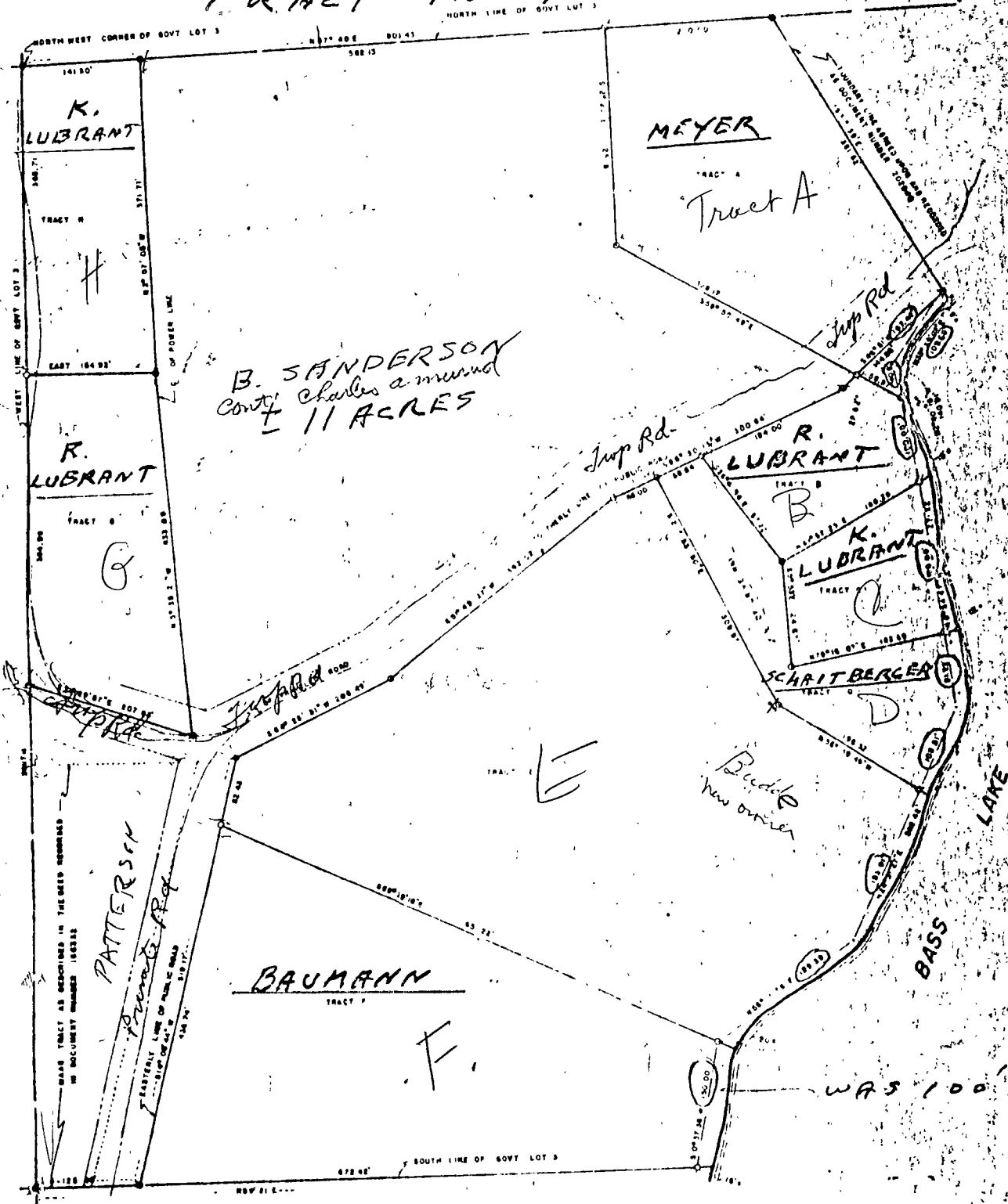
PLAT OF SURVEY

IN GOVT. LOT 3, SEC. 27, TWP. 140N, RGE. 26 W.

CASS CO. MINNESOTA

MEETS & BOUNDS FOR EACH TRACT IN T.L. FILE

SAVE



RECORDED AND INDEXED  
BY THE COUNTY CLERK  
ON THE 10th DAY OF OCTOBER 1972

Wallace F. Buehler  
OCT. 10, 1972