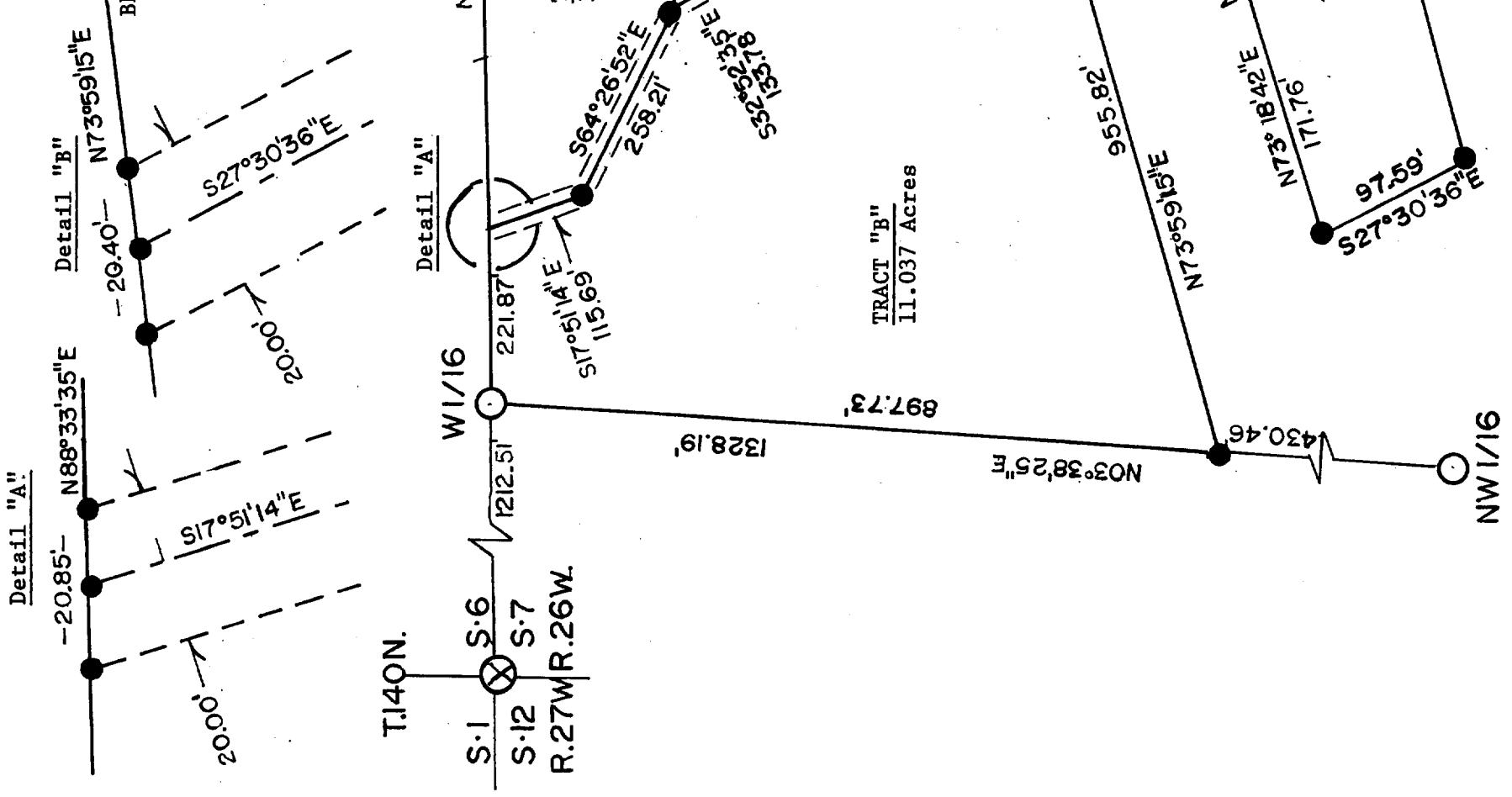
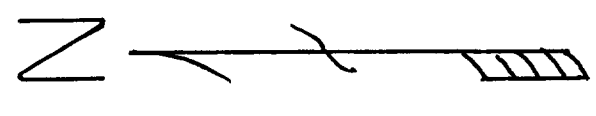


CERTIFICATE of SURVEY

BEING PART OF GOVERNMENT LOT 4, SECTION 7, TOWNSHIP 140 NORTH,
RANGE 26 WEST OF THE 5TH PRINCIPAL MERIDIAN
CASS COUNTY, MINNESOTA



LITTLE
BASS
LAKE



LEGEND

- ⊗ - GLO Corners - Cast Iron
- - Section Subdivision Corner
- - Iron Pipes - Previous Surveys
- - Set 1/2" x 24" Re-bar/Plastic Cap

SCALE: 1" = 200'

Bearing from previous survey by
Landecker - Stevenson & Associates Inc.

Surveyors Affidavit:

I, Milo E. Stefan, R.L.S. No. 1226, a Registered
Land Surveyor in the State of Minnesota, and at
the request of Richard Sawvel, have surveyed and
marked three tracts as indicated on this plat
drawing. I certify that this plat drawing is a
true and correct representation of the lands
surveyed and marked to the best of my abilities.

Milo E. Stefan
Milo E. Stefan
RLS# 12261
Dated 7/28/04

