

29-14325 Overlay

Main N.W. Corner  
Section 39-30

Sta. 327743.0

East - 875.0' - - -  
Equation  
AH Sta. 325+970  
BX Sta. 326+74.6

LOT 3  
DENZIL R. & CLEON BROSSARD  
SW 1/4 - NW 1/4 - Sec. 29  
T143N - R25W

① centerline of road Billis approximately 65 feet east of NW corner of Lot 4. West boundary of road R/W is approximately 24 feet east of NW corner. Note that measurement is "approximate" - the NW corner of Lot 4 would not found, however this should be reasonably close.

JOSEPH GEORTRUDE JOHNSON  
66' R-O-W Limits

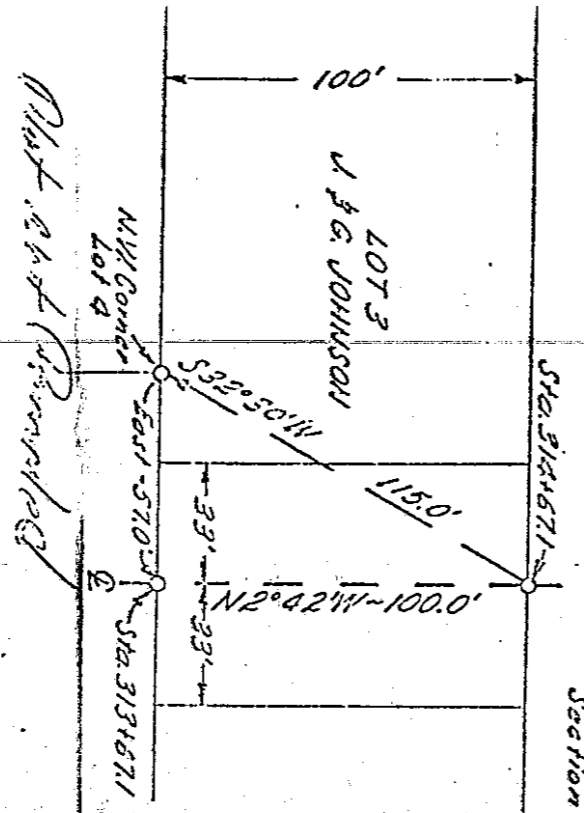
BROSSARD R-O-W Length = 1355.5'  
Width = 66'  
Acres = 2.05

JOHNSON R-O-W Length = 1000.0'  
Width = 66'  
Acres = 0.15

POSTWEILER R-O-W Length = 1674.9  
Width = 66'  
Acres = 2.34

LOT 4  
GORDON O. POSTWEILER  
NE 1/4 - SW 1/4 - Sec. 29  
T143N - R25W

SW 1/4 Corner  
Section 29



U.S. DEPARTMENT OF AGRICULTURE	
FOREST SERVICE	
REGION-6	MINNESOTA
RIGHT OF WAY	
VERMILION LAKE AND RESERVE	
CHIPPEWIA NATIONAL FOREST	
DESIGNED <u>MB</u>	DRAWN <u>MB</u>
SCALE <u>1" = 200'</u>	CHECKED
APPROVED	DATE