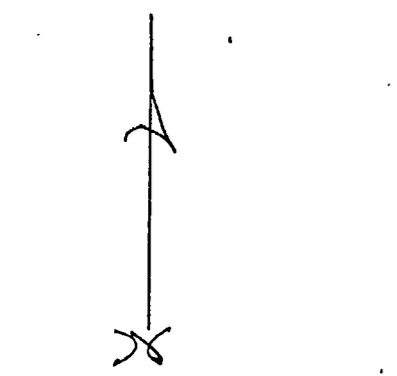


NORTH 1/4 COR
SEC 15

PART OF GOVT. LOT 2, SEC 15,
T. 140N, R. 23W, CARROLL COUNTY, MIN.



SCALE: 1 inch = 200 FT

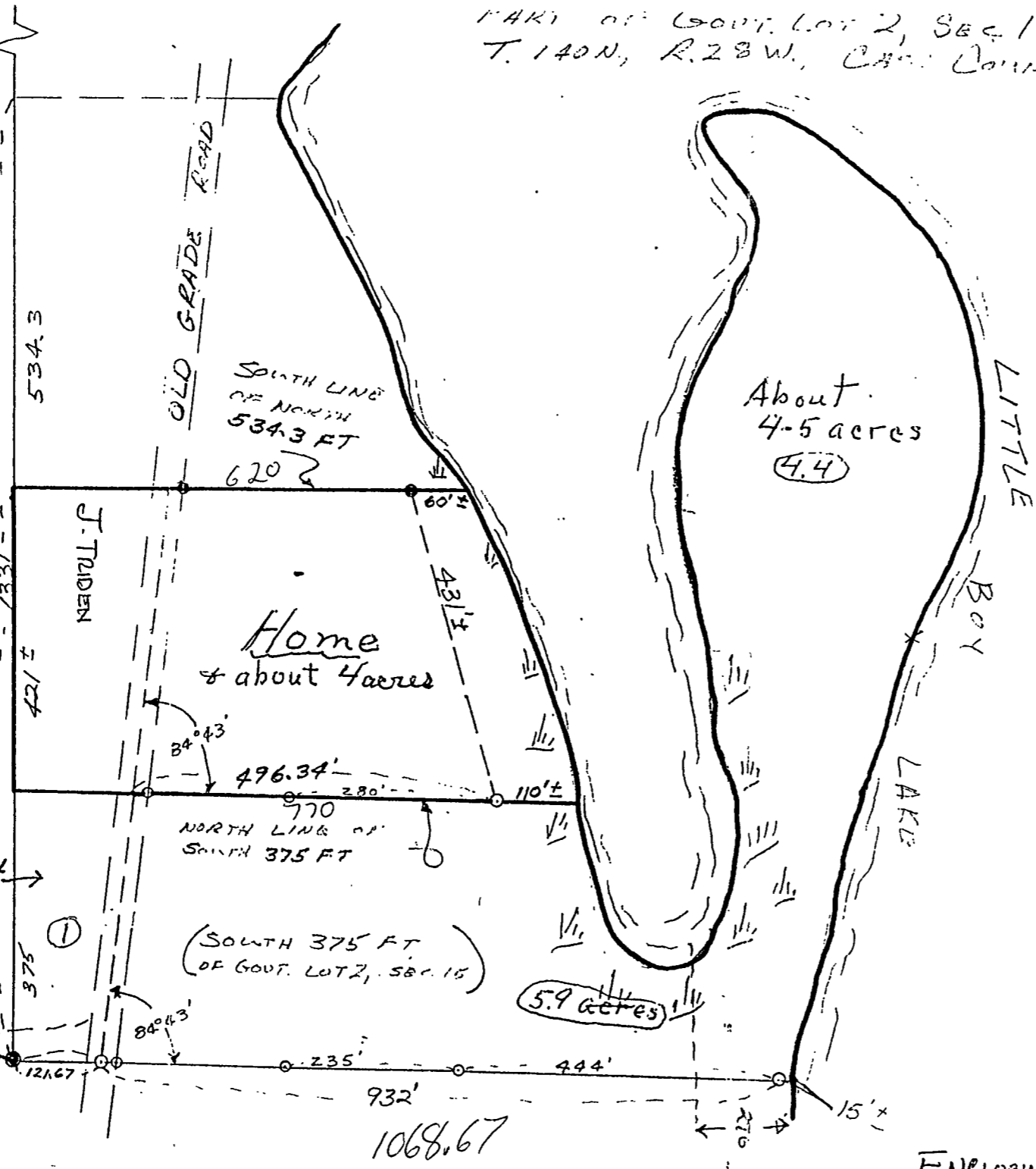
● = FOUND MON

○

375
421
534
1330

W. line of Lot
New Road R/W
takes part →

CENTER OF SECTION 15
RE-ESTABLISHED FROM
COUNTY FILED SURVEY
INFORMATION



15.25

ENCLOSURE 2