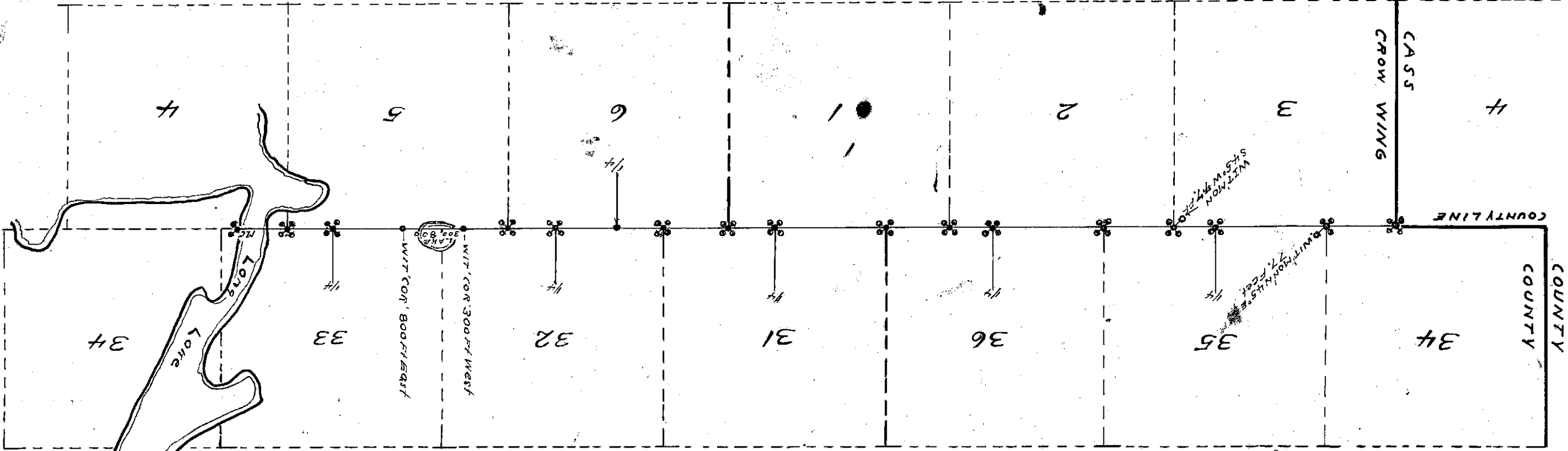


PLAT OF  
NINTH STANDARD PARALLEL

2x48 INCH IRON MONUMENTS WITH 3 1/2 INCH ROUND CAPS AND HEAVY ANCHOR RODS SET IN STONE MARK ALL U.S. CORNERS.  
2x48 INCH IRON WITNESS BEARING MONUMENTS WITH 3x4 INCH OBLONG CAPS AND HEAVY ANCHOR RODS SET IN STONE TAKE THE PLACE OF  
ORIGINAL OLD U.S. BEARING TREES  
ALL WITNESS BEARING MONUMENTS SET VIZ: NE-NW-SW & SE AND ARE 45 FEET DISTANT FROM THE CORNER, EXCEPT THE TWO SHOWN BY  
THIS PLAT WHICH ARE 77 FEET DISTANT ON ACCOUNT OF CURVE IN STATE HIGHWAY

137-29



136-29

136-28

NOTE: THIS LINE HAS BEEN VERY CAREFULLY AND VERY ACCURATELY SURVEYED BY AND UNDER THE DIRECTION OF JOHN W. CROO, COUNTY SURVEYOR  
CROW WING COUNTY MINNESOTA. SURVEY MADE JANUARY TO MAY 1921. THE COUNTY RECORD BOOK OF SURVEYS WILL SHOW THIS SURVEY MORE  
IN DETAIL.

COUNTY SURVEYOR JOHN W. CROO  
MAY 31st 1921

*John W. Croo*

9th Standard Parallel  
1-A