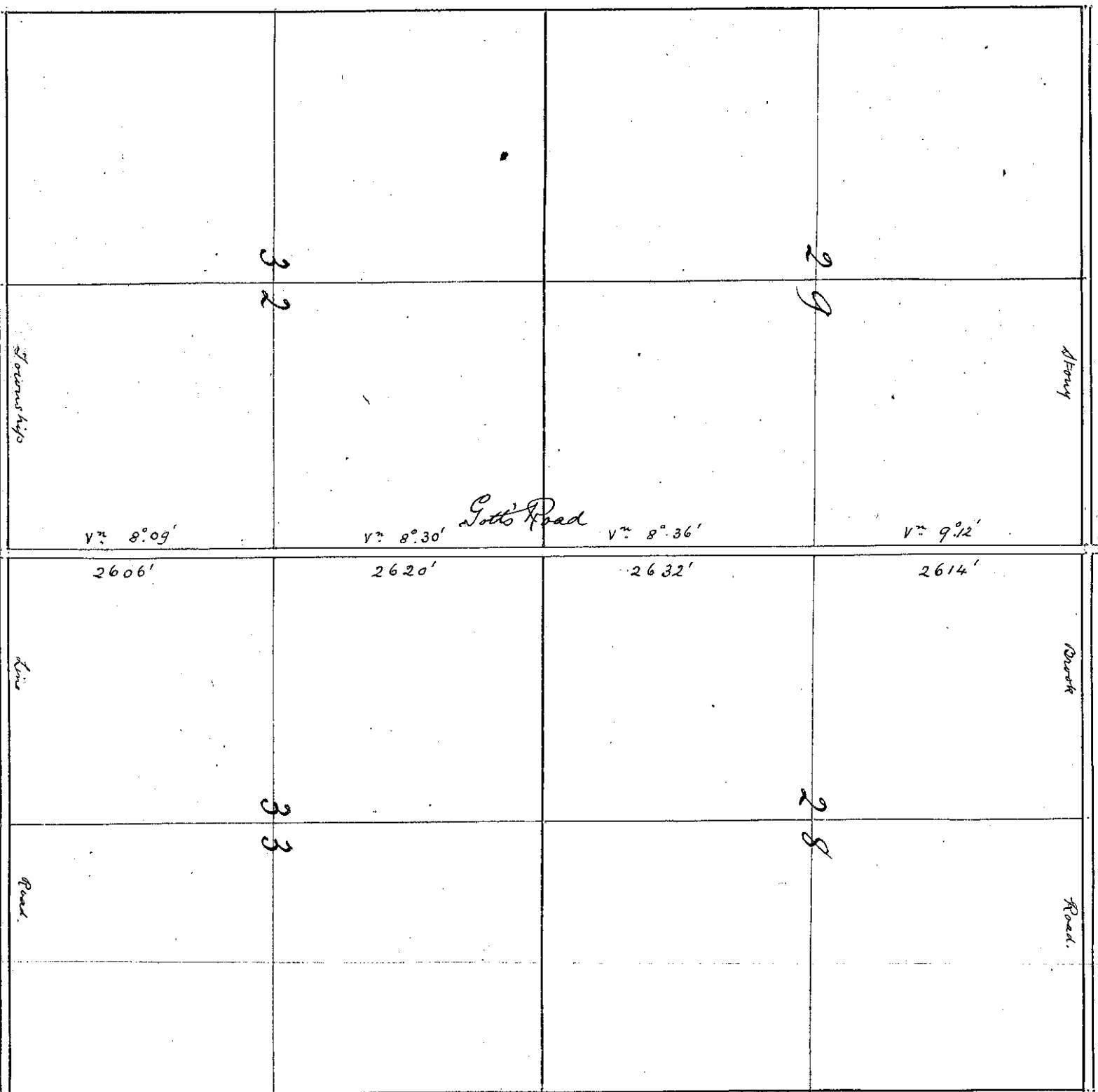


RECORDED ON PAGES 20-44
ROAD CALENDAR 'A'

Plat

Recorded on page 13
"Book 15" - "Additions"
Gott's Pond. Road de. and.

Map: 136 Range. 30.



7.

OK.
N.B. The Pond (2 miles long) lies to East side of the section line lying between sections 28 and 29; and sections 32 & 33 of Township 136 N of Range 30 W of the 5th Prin. Meridian.

Collection Copy

Regnot. Minn. April 27th 1907.

J. W. H. Suffman (surveyor) do hereby certify that I have surveyed the Road known as "Gott's Road" and that the within Plat is a correct Plat of the same and that the measurements therein designated are accurate and correct.

J. W. H. Suffman.

Subscribed and sworn to before me this 30th day of April 1907.

J. W. H. Suffman
Town Clerk of Maple Lake
Cass Co. Minn.

RECORDED ON PAGES 20-41
ROAD CALENDAR 'A'