

Birch

Lake

Gov Lot 7  
Sec 14, T140N R931W  
47.25 Acres U.S. Survey

2468.62

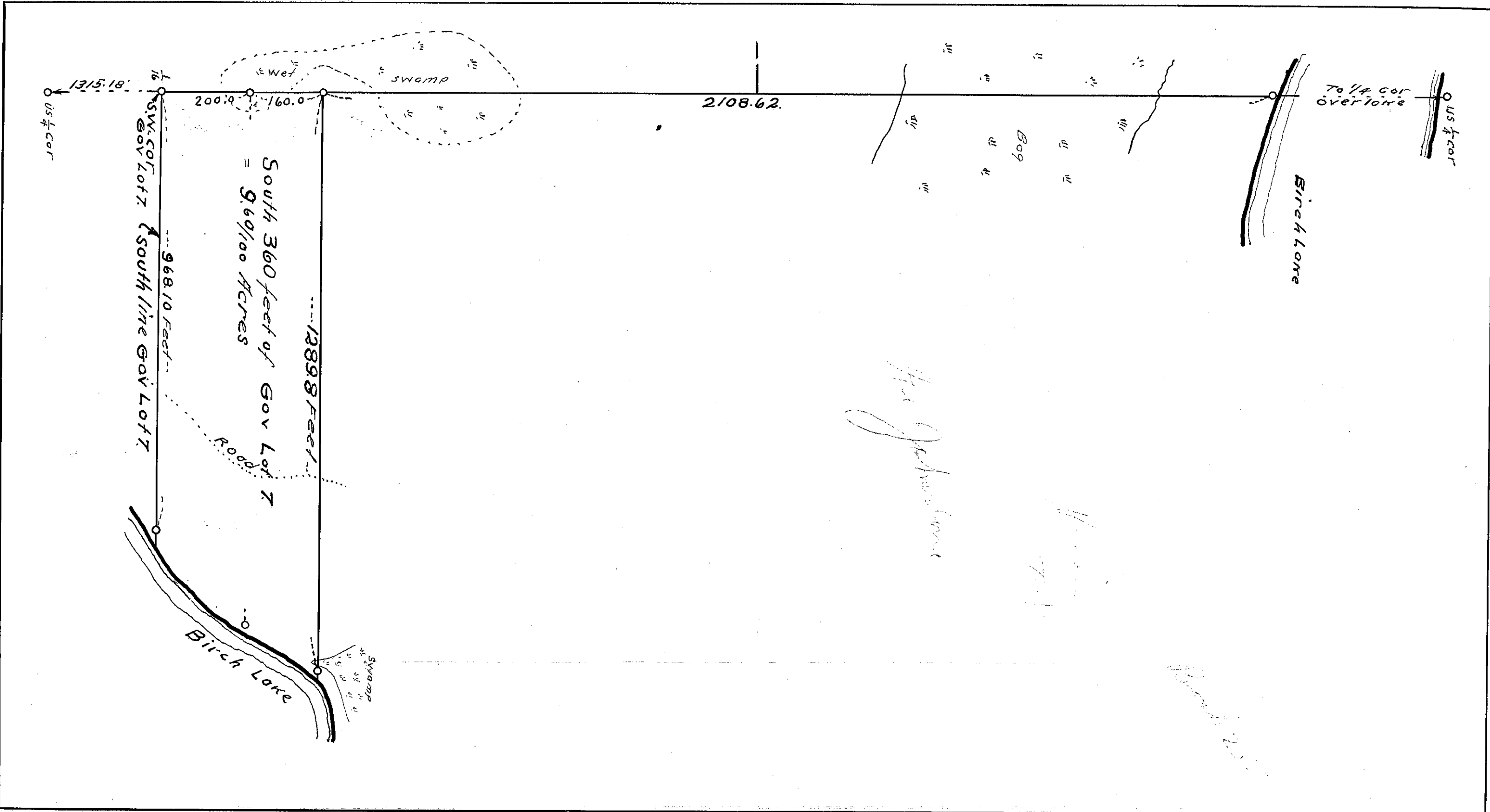
968.1

1315.18

12

12

Birch



1315.18' ←  
US 1/4 COR

1/4 SW. COR Gov Lot 7  
968.10 Feet  
South line Gov Lot 7

South 360 feet of Gov Lot 7  
= 9.69/100 Acres

1289.8 Feet

Road

Birch Lake

SWAMP

2108.62.

Bog

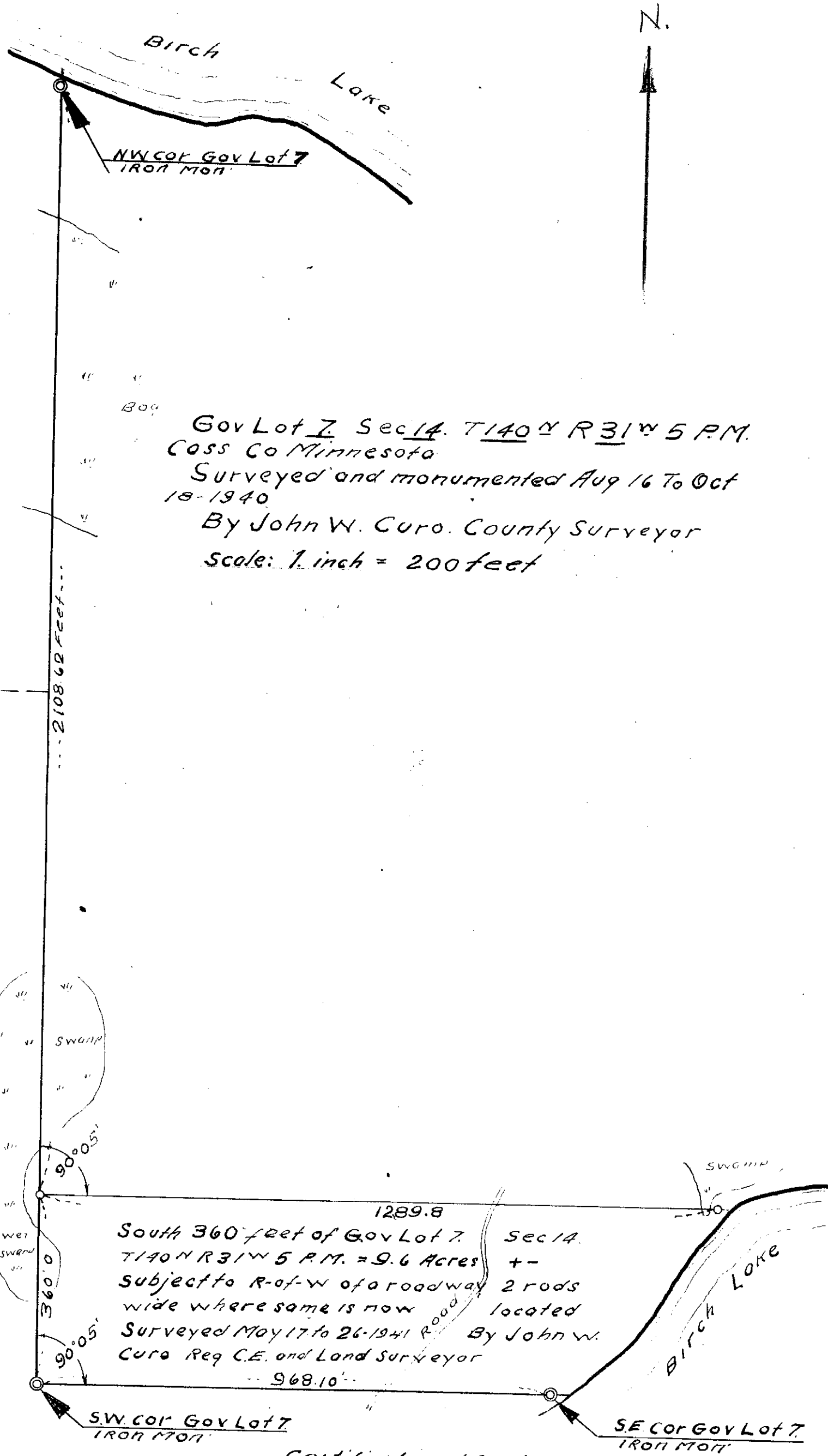
Birch Lake

To 1/4 COR  
overlone

US 1/4 COR

for Johnson

2/08.62.



Gov Lot 7, Sec 14, T140N R31W 5PM.  
 Cass Co Minnesota  
 Surveyed and monumented Aug 16 To Oct 18-1940  
 By John W. Curo, County Surveyor  
 Scale: 1 inch = 200 feet

South 360 feet of Gov Lot 7, Sec 14,  
 T140N R31W 5PM. = 9.6 Acres +-  
 Subject to R-of-W of a roadway 2 rods  
 wide where same is now located  
 Surveyed May 17 to 26-1941 By John W.  
 Curo Reg C.E. and Land Surveyor

Certificate and seal:  
 I hereby certify that this map is correct Dated at  
 Walker Minn this 29th day of May 1941.  
 John W. Curo  
 Minn Reg No 1428.  
 seal