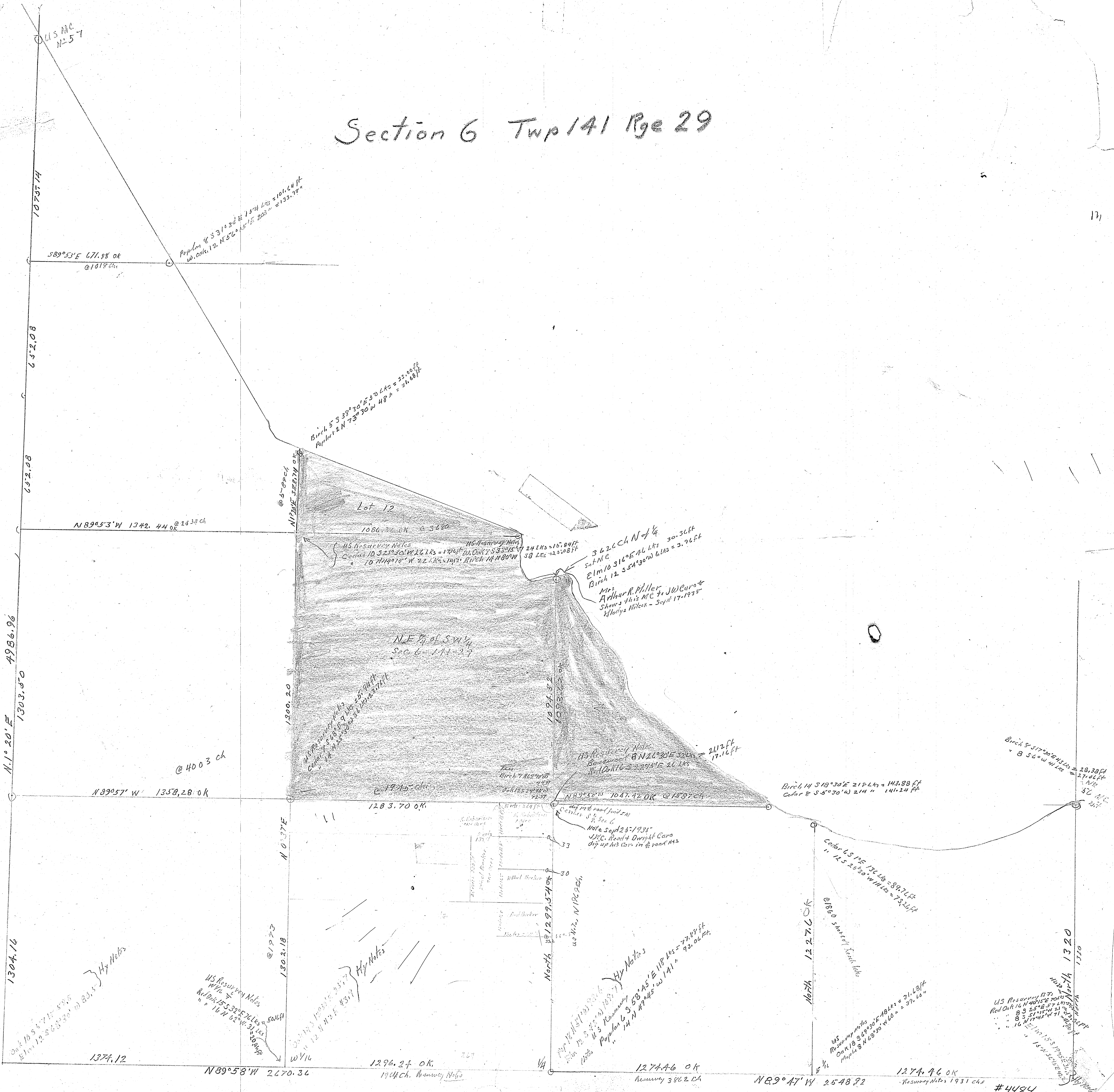


Section 6 Twp 141 Rge 29



Poplar 8 S 31° 30' E 75.24 Lks = 101.64 ft
Poplar 12 N 5° 20' E 15.15 Lks = 133.95 ft

Birch 5 S 39° 30' E 50 Lks = 23.00 ft
Poplar 12 N 73° 30' W 48 ft = 31.68 ft

Lot 12
1086.74 OK @ 3680

NE 1/4 of SW 1/4
Sec. 6 - 141-29

362.6 Ch N of 1/4
Set MC
Elm 10 S 16° E 16 Lks = 30.36 ft
Birch 12 S 54° 30' W 6 Lks = 3.96 ft

Mrs. Arthur R. Miller
Shows this MC to J.W. Caro &
Hedley Wilson - Sept 17, 1935

US Resurvey Notes
Bordwell
S 10° 16' E 26 Lks = 21.2 ft
17.16 ft

Birch 14 S 18° 30' E 21 Lks = 143.88 ft
Cedar 8 S 5° 30' W 21 ft = 141.24 ft

Birch 8 S 17° 30' E 43 Lks = 28.38 ft
S 56° W 41 Lks = 27.06 ft

Note Sept 28-1938
J.H.C. Road Dwight Caro
dig up his car in the road N43

Cedar 15 S 15° E 13 Lks = 89.71 ft
" 12 S 25° 50' W 11 Lks = 73.26 ft

US Resurvey Notes
W 1/4
Red Oak 15 S 31° E 76 Lks = 71.68 ft
" 16 W 12° 30' W 31 Lks = 93.06 ft

US Resurvey Notes
Red Oak 16 N 40° 15' E 70 Lks = 71.68 ft
" 8 S 25° 15' W 21 Lks = 93.06 ft
" 10 E 11° 15' W 21 Lks = 93.06 ft

#4484