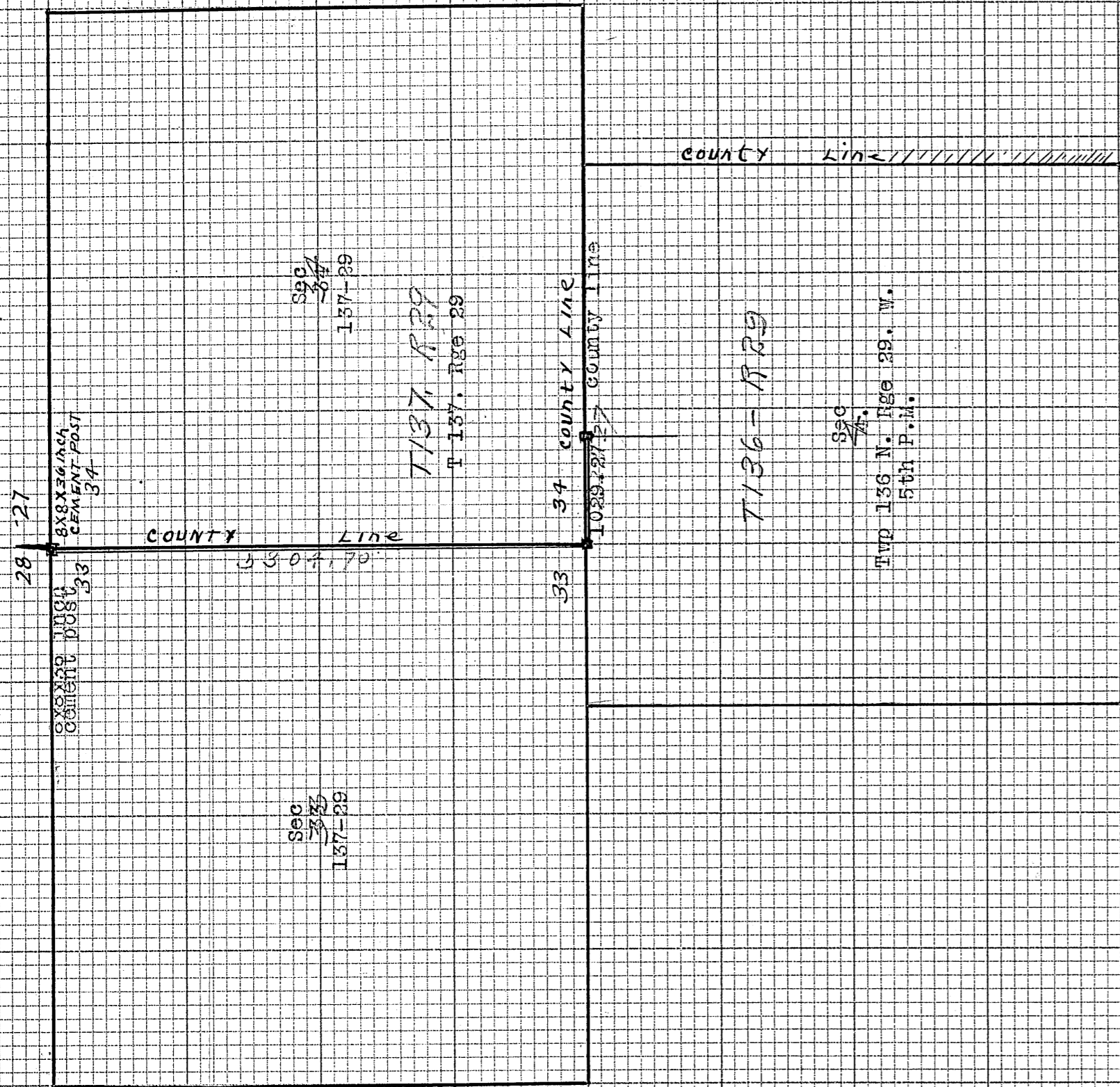


Plat of Judicial Rightway between Cass and Crow Wing Counties, Minnesota
 between sections 33, and 34, Twp 137 N. Rge 29
 and between section 4, Twp 136 N. R. 29 and sec 34, T. 137 Rge 29



To the board of commissioners appointed by Hon. W. S. Mc Glenahan
 Judge of District Court 15th Judicial

district:
 The undersigned John W. Guro
 having been employed by you to make a survey of a road in said Judicial
 District would report that the following is a correct survey thereof as
 made by me under your direction as made by xxx to wit

Beginning at Station No. 1, being a stonax cement post 8x8x36 in
 ches ~~in diameter~~ set well into the ground at the true corner to Sections
 27, 28, 33, 34, Twp 137 N. Range 29 W. 5th P.M. said cement post set from
 old Government bearing trees.
 Thence South 830' Var following the section line between
 secs 33 & 34., 5304.70 feet to station No. 2, being a cement post 8x8x36
 inches in diameter set well into the ground at the true Southwest corner
 of said Section 34, T137 N. Rge 29 W. At this point the Government bearing
 trees were lost and we established the point for station No. 2 by running
 4 1/2 miles of line along the South boundary of Township 137-29, being
 from the SW corner of the twp, East to the 1/4 post on the south side
 Thence East 830' Var following the true Township line, 1029.27 feet
 to Station No. 3, being a cement post 8x8x36 inches in diameter set well
 into the ground at the true 1/4 section corner on the North side of Section
 4. Twp 136 N. Rge 29 W.
 There were no Government bearing trees at Stations No. 2, and 3, and we
 established the points by beginning at the true SW corner of twp 137-29
 and running East 4.1/2 miles to the 1/4 cor on S side of Sec 35-137-29
 at which points we found the old Gov't bearing trees.
 Line run perfect, with a perfectly adjusted Newfel & Esser transit,
 double centre tacked hubs, and measured with a 300. foot Chicago steel 300
 tape., perfect measurement, plumbob line. and check chained.

I hereby certify that the above is a correct copy of the survey
 of road running 5304.70 feet South and 1029.27 feet East being from the
 NW cor 34-137-29 to the 1/4 on North side of Sec 4-136-29
 Cass and Crow Wing Counties Minnesota., which was made
 Sept 12th 1910 to Oct and 1910 by direction of George Newman,
 James Ellis
 and John Oberlinder
 commissioners appointed by the Judge for that purpose

Dated at Walker Minnesota this 15th day of November A.D. 1910

John W. Guro
 County Surveyor Cass County Minnesota