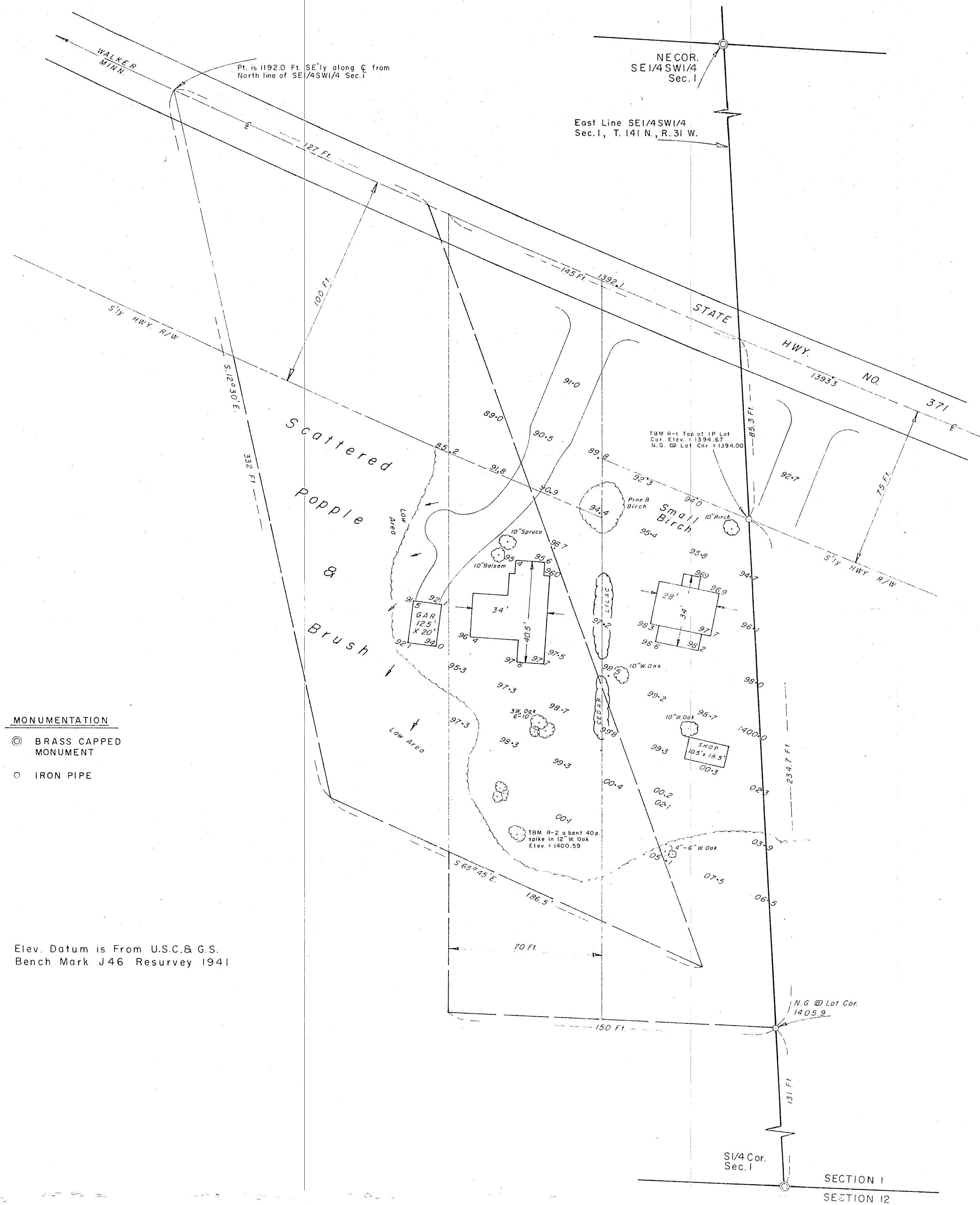
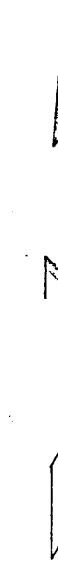
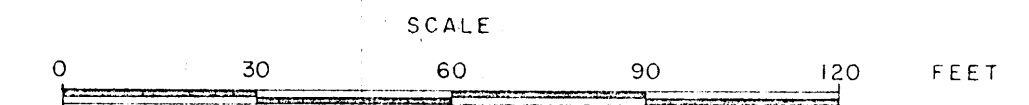


PRELIMINARY PLAN

PART OF  
SE 1/4 SW 1/4 in SECTION 1  
T. 141 N. - R. 31 W.

CASS COUNTY, MINNESOTA

FIFTH PRINCIPAL MERIDIAN



- MONUMENTATION**
- ◎ BRASS CAPPED MONUMENT
  - IRON PIPE

Elev. Datum is From U.S.C. & G.S.  
Bench Mark J46 Resurvey 1941

I hereby certify that this survey plan, or report was prepared by me or under my direct supervision and that I am a duly Registered Land Surveyor under the laws of the State of Minnesota.

*W. J. Spain, Jr.*  
Date: 11 March 1974 Reg. No. 2003