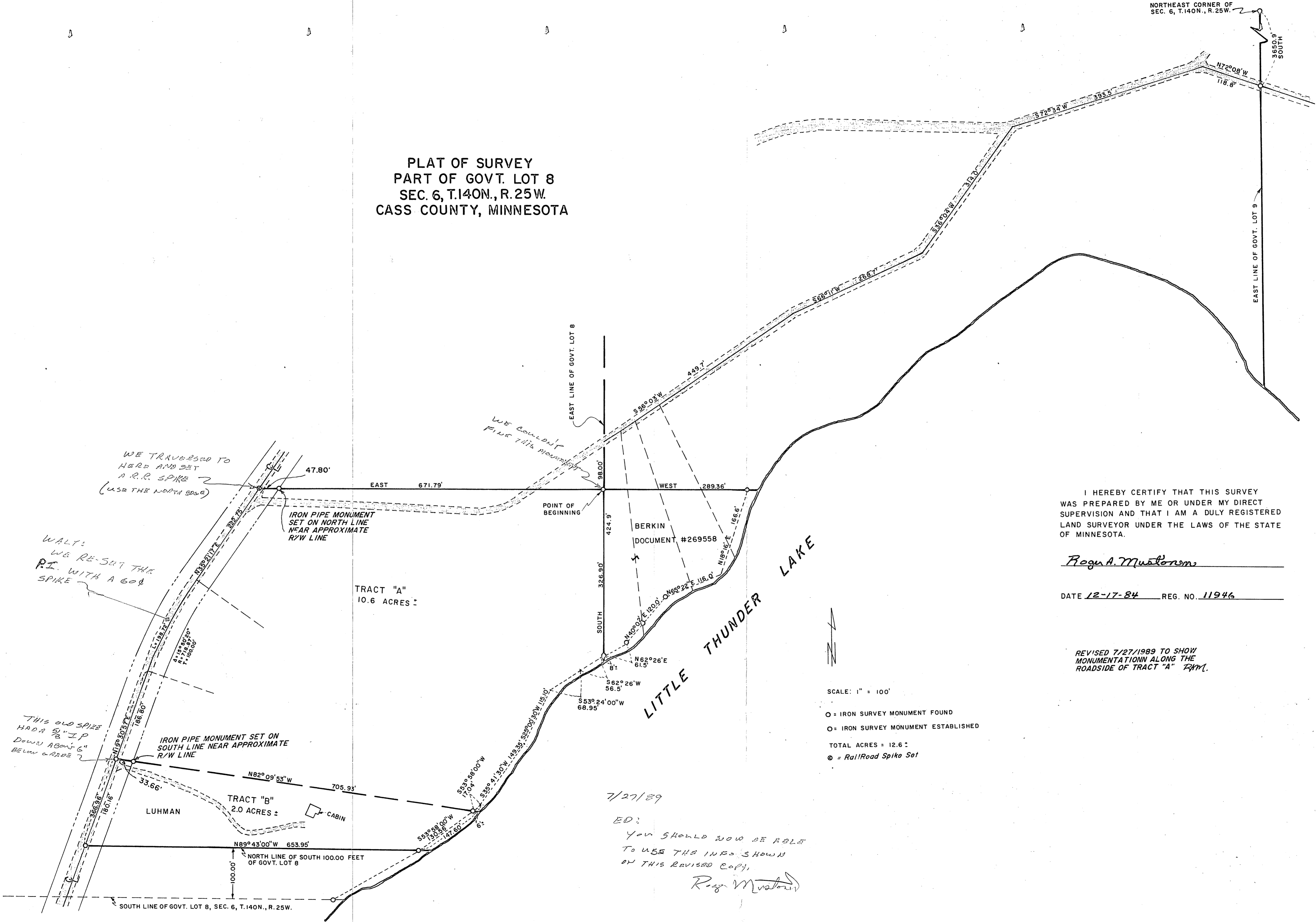


PLAT OF SURVEY
PART OF GOVT. LOT 8
SEC. 6, T.140N., R. 25W.
CASS COUNTY, MINNESOTA

NORTHEAST CORNER OF
SEC. 6, T.140N., R. 25W.



I HEREBY CERTIFY THAT THIS SURVEY
WAS PREPARED BY ME OR UNDER MY DIRECT
SUPERVISION AND THAT I AM A DULY REGISTERED
LAND SURVEYOR UNDER THE LAWS OF THE STATE
OF MINNESOTA.

Roger A. Mustonen

DATE 12-17-84 REG. NO. 11946

REVISED 7/27/1989 TO SHOW
MONUMENTATION ALONG THE
ROADSIDE OF TRACT "A" *RJM*.

- SCALE: 1" = 100'
- = IRON SURVEY MONUMENT FOUND
 - = IRON SURVEY MONUMENT ESTABLISHED
 - TOTAL ACRES = 12.6 ±
 - ⊙ = Railroad Spike Set

7/27/89
ED:
You should now be able
to use the info shown
on this revised copy,
Roger Mustonen

WE TRAVERSED TO
HERE AND SET
A R.R. SPIKE
(USE THE NORTH SIDE)

WALY:
WE RE-SET THE
R.R. WITH A 60#
SPIKE

THIS OLD SPIKE
HAD A 2" IP
DOWN ABOUT 6"
BELOW GRADE

WE COULDN'T
FIND THIS MONUMENT

RECEIVED
4437
2010
CL8 6-140-25
COUNTY SURVEYOR