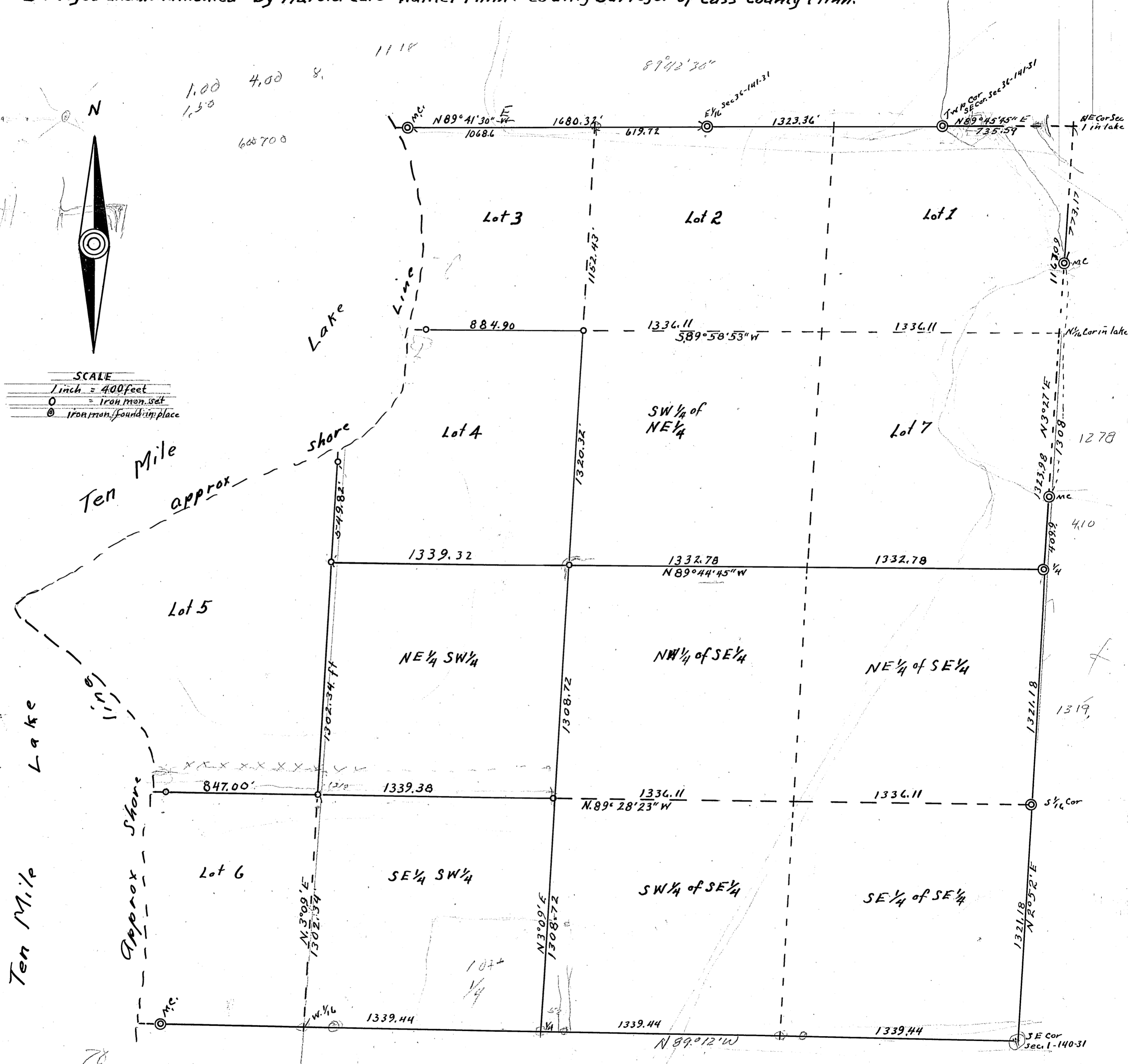
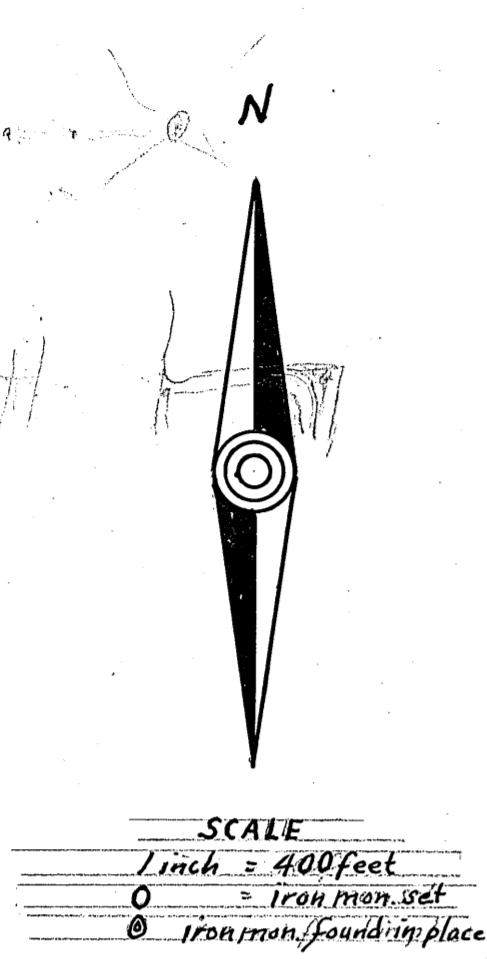


Plat of Section 1 Township 140^N Range 31^W of the 5th P.M. Cass County Minnesota
 Showing boundary lines of Government Lots 4 and 5 and the NE 1/4 of the SW 1/4 of said section 1
 Surveyed and monumented by Harold Curo Walker Minn. County Surveyor of Cass County Minn.



CERTIFICATE of SURVEYOR

I the undersigned Harold Curo County Surveyor of Cass County Minn. hereby certify that I am a Registered Land Surveyor in the State of Minnesota, that I have surveyed and set iron pipe monuments for the true corners to Government Lots 4 and 5 and the NE 1/4 of the SW 1/4 of Section 1 Twp 140^N Rge 31 W of the 5th P.M. Cass County Minnesota that said monuments are correctly placed in the ground

Dated this 14th day of Feb 1957
 Harold Curo
 Minn Reg. No 3417

#4395

10