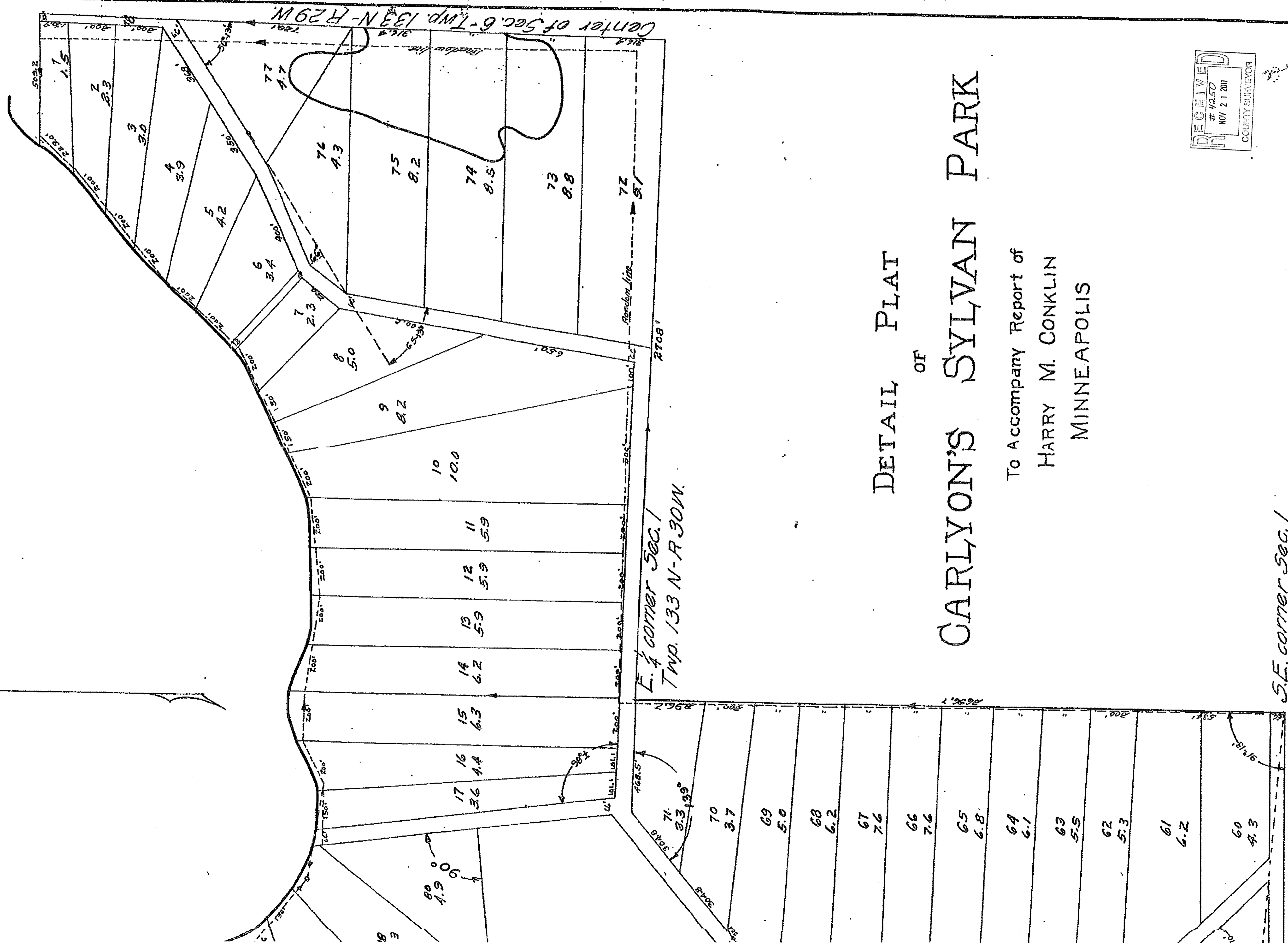


DETAIL PLAT
OF
CARLYON'S SYLVAN I

To Accompany Report of
HARRY M. CONKLIN
MINNEAPOLIS

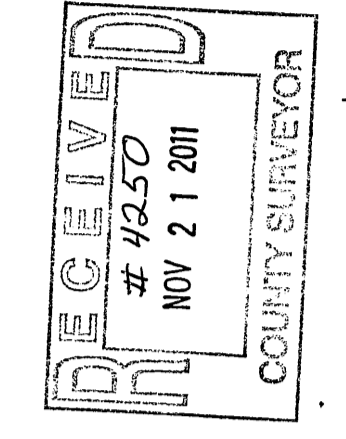
RECEIVED
#4250
SEP 14 2009
F/JIM NIELSEN
CASS COUNTY SURVEYOR

Exhibit



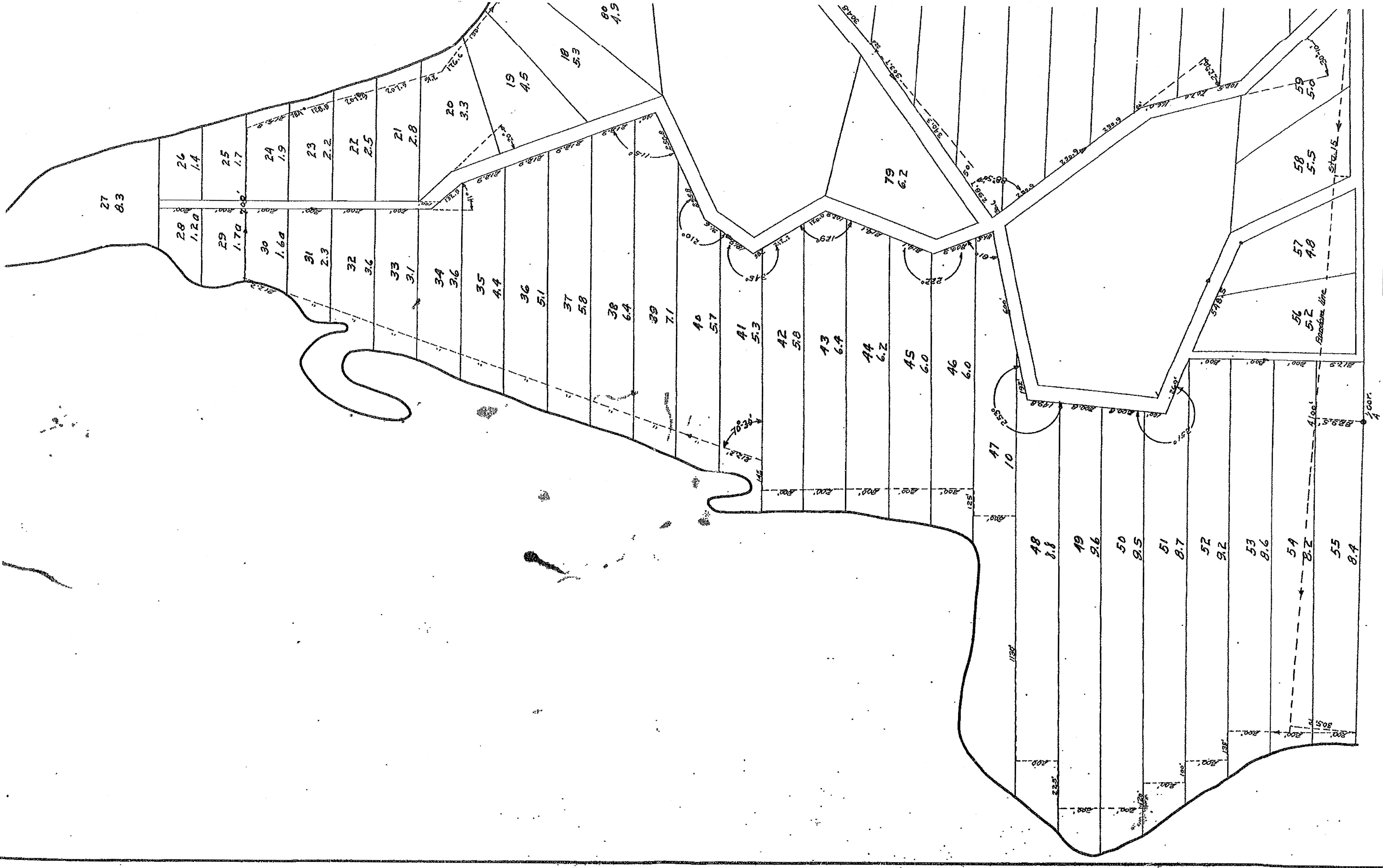
DETAIL PLAT
OF
CARLYON'S SYLVAN PARK

To Accompany Report of
HARRY M. CONKLIN
MINNEAPOLIS



S.E. corner Sec. 1
Twp 133 N-R 30 W

Exhibit "C"



#4250
 NOV 21 2011
 COUNTY SURVEYOR

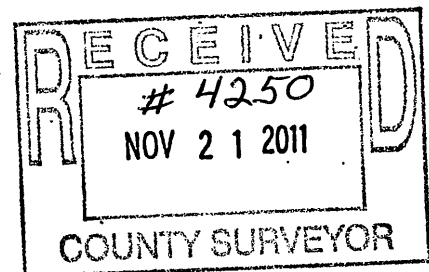
REPORT ON

CARLYONS SYLVAN PARK

SURVEY.

By

H.M.Conklin C.E.
Minneapolis, Minn.



To R.E. Carlyon

Having complied with your request to survey and plat into lots your property located in Cass County, Minn. described as follows: Lots two (2), three (3), four (4), five (5), six (6) and the southeast quarter of Section 1 township 133 north, range 30 west: and lots three (3) and four (4) and the southeast quarter of the northwest quarter of Section 6 township 133 north, range 29 west: and lot four (4) of Section 36 township 134 north, range 30 west, all containing four hundred and ninety two (492) acres more or less according to the United States Government survey, I herewith submit my final report to you together with plats.

Work was started on the proposed plat by going to Walker, Minn. and making a copy of the United States Government field notes, a copy being shown by Exhibits "A" and "B" of this report.

After obtaining a copy of the field noted work was started upon the survey proper and proceeded as follows: Started at the S.E. corner of Sec. 1-133-30 and checked to the west along a random line run in previous

survey by one of the Minnesota State engineers. The starting point was a monument consisting of a 3" pipe set in concrete. Ran west along the random line for a distance of 4100 feet to the shores of Sylvan Lake. At Sta. 26 # 62.3 on random line a 90° angle was turned to the south and the line goes thru the south quarter corner of Sec. 1-133-30. The corner is marked by a small pipe. The distance from Sta. 26 # 62.3 to the quarter corner is 229.5 feet. At Station 41#00 on the random line a 90 degree angle was turned and the line passed thru the U.S. Gov't meander corner. The old witness trees were found as follows, to the S.E. the Norway Pine is standing and to the N.E. is the stump of the old witness tree with the old blaze at the bottom. See Exhibit "A" of this report for distance from the corner to the witness trees. The distance from Sta. 41#00 on the random line to the meander corner is 305.2 feet. There is an angle at the quarter corner in the south line of Sec. 1-133-30.

Started staking lots by setting the instrument over the meander corner on the south line of Sec. 1-133-30 and sighting on Sta. 41#00 of the random line; then turned an angle of $4^{\circ}-15'$ to the left and established this line as a base line and called it a north and south line.

Thence north from the meander corner for a distance 200 feet to the north corner of Lot 1; thence north from the corner of lot 1, 200 feet to a point, set corner of lot 2, 27.5 west of point; thence north from point 200' thence west 135' to corner of lot 3; thence north from corner of lot 3 200' thence west 100' to corner of lot 4. The corner of lot 4 is on a high bank, 125' to the shore line of Sylvan Lake. Thence north from the corner of lot 4-200' to a point, thence west 120 feet to corner of lot 5. High bank at corner of lot 5, 125 feet to the lake shore. Thence north from the corner of lot 5 for a distance of 200 feet to a point, corner of lot 6-50' west of point, 175' west from corner of lot 6 to lake shore (estimated). Thence north from point for a distance of 200' to the corner of lot 7. Thence east from the corner of lot 7 a distance of 225' to a point, thence north from point 200' to another point, set corner of lot 8 80 feet west of point, thence east from point a distance of 1130 to a point on the north line of lot 8. Set permanent stake at this point. Thence north 200' to a point, set corner of lot 9-50' west of point, thence east from point 125' to point thence north from point 200' to a point, set corner of lot 10-85' west of point. Thence north from point 200' to point, set corner of lot 11 75' west of point. Thence north from point 200' to

point, corner of lot 12-50' west of point, thence north from point 200' to point, corner of lot 13-35' west of point. Thence north from point 200' to corner of lot 14. Point of land runs out to N 5° W 75' long wide and 200' long. Shore line 100' west of corner of lot 14 and 50' north. Thence east from the corner of lot 14 for a distance of 145' to a point on high bank. Thence north 30° east from point for a distance of 212.2 feet to the corner of lot 15, thence in the same direction and for the same distances until the north line of lot 26 was reached. This lot 26 is lot 30 on the plat. The original notes contain sketches of Norway Point and its directions.

Hereafter in this report the lot numbers referred to will be the same as those on the plat. Thence E. along the north line of lot 30 for a distance of 700' to the bank of Sylvan Lake (Upper Sylvan) A point 400' E. of the north corner of lot 30 was selected as the center line of a 66' road to the south. This was later changed and the west line of the 66' road was made the east line of a 33' road and the stakes set accordingly.

Started running south on the east line of the 33' road, from the north line of lot 30. Thence south 200' to lot 31, thence south 300' to cor lot 32, thence south 200' to corner of lot 33, thence south 100' to a point, thence south 41° east for a distance of 132.5' to corner of lot 34. Thence south 20° east for a distance of 212.9' to corner of lot 35. Thence south 20° east for the same distance of 212.9' until a point was reached which is 100' south east of the corner of lot 38. Thence south 65° west for a distance of 250.8 feet to the corner of lot 39. Thence south 65° west for a distance of 295.8' to the turn in the road, thence south 35° west for a distance of 91.6' to the corner of lot 40. Thence south 35° west for a distance of 181.9' to the turn in the road, thence south 30° east for a distance of 58.9' to corner of lot 41. Thence south 30° east for a distance of 212.2' to the corner of lot 42. Thence south 30° east for a distance of 120.0' to the turn in road, thence south 21° west for a distance of 102.9' to the corner of lot 43. Thence south 21° west for a distance of 214.1' to the corner of lot 44. Thence west-south 21° west for a distance of 214.1' to the corner of lot 45 and the turn in the road, is 14' on the same line in the south west from corner of lot 45. Thence south 21° west east for a distance of 200.3 to the corner of lot 46. Thence south

21° east for a distance of 81.5' to the corner-of-let
turn in the road. This point is on a small hill and at
the intersection of several roads. Thence south 78° west
for a distance of 600' to the corner of lot 47. Thence
south 78° west for a distance of 192.0' to the turn in
the road. Thence south 5°-30' west for a distance of 149.8'
to the corner of lot 48. Thence south 5°-30' west for a
distance of 200.8' to the corner of lot 49, thence in
the same direction for the same distance to the corner
of lot 50, thence in the same direction for a distance of
100' to a turn in the road. Thence south 66° east for
a distance of 269' to the corner of lot 51.

A road also goes thru on the same line for a
distance of 548.5' to the turn. The road then turns and
the intersection of it with the road along the south
line of section 1-133-30 is at an angle of 90° from
station 15 on the random line. (See exhibit "C")

From the N.E. corner of lot 52 started south
and staked lots every 200' except lot 55 which is 217.9'.

Started running a random line on the east line of section 1-133-30, running it as near due north as I could determine. Magnetic deflection $10^{\circ}-30'$. I also lined in with the fence to the south, which fence is set on the line set in a former survey by one of the state engineers. I also ran on an offset 55 ten feet because of the difficulty of brushing along the old fence line. Ran north for a distance of 2696.7' and found the oak bearing tree to the east. (See Exhibit "A") The corner was 11.7' east of the random line, as determined by the oak witness tree. What was supposed to be the stump of the other witness tree was also found but it had decayed so badly it could not be recognized as a witness tree. After finding the corner, which is the east quarter corner of Sec. 1-133-30 the stakes were set along the east line as shown by exhibit "C". From the quarter corner of sec. 6 and 1 the line was extended to the shores of Sylvan Lake and the meander corner was found also both the witness trees, see exhibit "A" for there location and description.

From the east quarter corner of section 1 ran east for a distance of 2653' and called it the center of section 6-133-39. (Later this was changed and the old stake was found set by some former surveyor) This line was run 66' north of the quarter line and the lot stakes were set as shown on exhibit "C".

Measured 66' south and set a point and thence north for a distance of 340' to the Banks of Robinson Lake, the name of which has been changed to Lake Mary Lois and will be called by the latter name if occasion should arise. It was necessary to triangulate across Lake Mary Lois. A 90° angle was turned to the right and a distance of 150' was measured to the west. A point was set on the north shore of the lake and the instrument was moved to it and the angle was measured between the line and the point set 150' west of the line the angle was found to be $90^{\circ}-40'$ which made the distance across the lake 880.6', measured north 2000' from the starting point at the center of the section and selected the point for the road to go to the south west. Measured on 600' more feet or 2600' from the center of the section and could not find the north quarter corner of section 6-133-29. Measured west 400' and was at the waters edge at Sylvan Lake. Looked and found the meander corner and the witness trees the corner being 70.4' south and 17.2' west of the point 400' west of Sta. 2600 on the random line.

Made the corrections at Sta. 26 on the random line by measuring south 70.2' and east 92' and found the old witness stumps and an oak stake set by a former surveyor. My stake came a little west of the stake which I found and since mine checked with the trees I called

my point correct, but left the oak stake in place.

Came to station 10 on the north and south quarter random line running thru section 6 and started running the road to the south west at an angle of south $56^{\circ}-13'$ west, for a distance of 1300 feet to the turn in the road. The stakes were set as shown on the plat "C". At a point 200' north east of the road turn a change was made to lessen the cost of road building. The line at this point was moved 66' north. Thence from the turn in the road south 9° west to the intersection with the south quarter line of section 6-133-29. This road joins the south quarter line 25.5' west of a point which was set 1400' west east of the west quarter corner of section 6-133-29. The lot stakes were set as shown on exhibit "C".

Went to the center of section 6-133-29 and looked to the east and south of the assumed corner and found an old stake set by a former surveyor, the stake being 55' east and 45' south of the assumed corner. Since this location makes the acreage figure out correctly and since it checks with an old fence I drove an iron stake for the center of the section.

Came to the east quarter corner of section 1-133-30 and went west for a distance of 468.5' to the turn in the road. Thence west 41° south for 304.8' to the corner of lot 70. Thence west 41° south for 304.8' to corner of lot 69. Thence west 41° south for 32.8' to a turn in the road, thence west 36° south for a distance of 303.7' to the corner of lot 68. Thence west 36° south for a distance of 340.3' to the corner of lot 67. Thence west 36° south for a distance of 298.7 feet to the turn in the road. This point is on a small inter-hill and is the intersection of several roads. Thence south $37^{\circ}-10'$ east for a distance of 30.6 feet to the corner of lot 66. Thence south $37^{\circ}-10'$ east for a distance of 250.9' to the corner of lot 65. Thence in the same direction and the same distances for the corners of lots 64 and 63. Thence in the same direction for a distance of 50' to the turn in the road. Thence south 15° east for a distance of 166' to the corner of lot 62. Thence south 15° east for a distance of 207.5' to the corner of lot 61. Thence south 15° east for a distance of 102.5' to the turn in the road. Thence south $45^{\circ}-10'$ east to the ~~east~~ intersection with the south line of section 1-133-30.

Next a 33' road was run from the north line of

lot 47 to the north for 800'. This road was abandoned and is not shown on the plats.

This constitutes the frame work of the survey the other lots were staked as shown on the exhibit "C" and iron stakes put at all the corners. The location of the iron stakes were marked by wooden stakes and the the lot numbers painted on in black.

The acreages shown on the plat are only approximate and when the lots are sold they should not be used as only approximate acreages, they are probably within two tenths of an acre and might be closer.

I have not made a complete copy of my field notes but have given only those that would be necessary to retrace my work should it be found necessary to do so in case some of the stakes are lost.