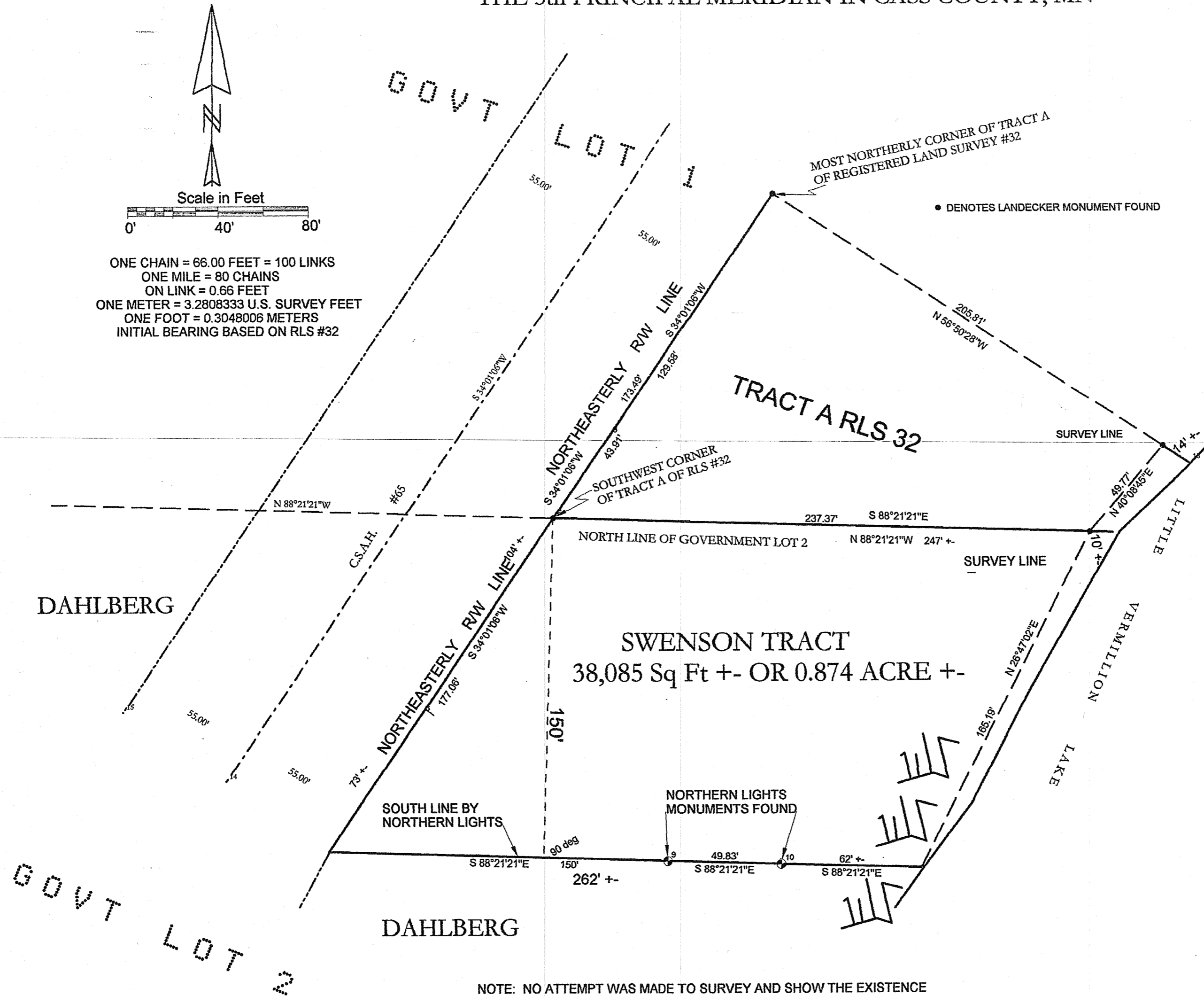


CERTIFICATE OF SURVEY

PART OF GOVERNMENT LOT 2, SECTION 21,
TOWNSHIP 143 NORTH, RANGE 25 WEST OF
THE 5th PRINCIPAL MERIDIAN IN CASS COUNTY, MN

Scale in Feet
0' 40' 80'

ONE CHAIN = 66.00 FEET = 100 LINKS
ONE MILE = 80 CHAINS
ON LINK = 0.66 FEET
ONE METER = 3.2808333 U.S. SURVEY FEET
ONE FOOT = 0.3048006 METERS
INITIAL BEARING BASED ON RLS #32



NOTE: NO ATTEMPT WAS MADE TO SURVEY AND SHOW THE EXISTENCE AND LOCATION OF WELLS, IMPROVEMENTS, UTILITIES OR VISIBLE FEATURES, EASEMENTS, ABOVEGROUND OR SUBSURFACE, TOPOGRAPHY, TERRAIN, LOW LAND LIMITS, ETC., EXCEPT AS SHOWN HEREON.

RECEIVED
#4049
NOV 5 2008
GL 2 21-143-25
COUNTY SURVEYOR

I, ROGER A. MUSTONEN, HEREBY CERTIFY THAT THIS SURVEY WAS PREPARED BY ME OR UNDER MY DIRECT SUPERVISION AND THAT I AM A DULY LICENSED LAND SURVEYOR UNDER THE LAWS OF THE STATE OF MINNESOTA.

Roger A. Mustonen 10-24-2008
ROGER A. MUSTONEN, P.L.S.
MINNESOTA LICENSE 11946

AMI SURVEYORS & MAPPERS
1073 COUNTY 5 NW HACKENSACK, MINNESOTA 56452
PHONE: OFFICE 218/682-2411 * FAX 682-2988