

SQUARE SPIKE-ORIGIN UNKNOWN

FOUND SQUARE SPIKE

1/2" OPEN PIPE-ORIGIN UNKNOWN

NOTHING FOUND
NO OCCURANCE

COMPUTER SPLIT

FOUND RLS#13620

DID NOT HOLD 1/16 POSITIONS
RECOMPUTED THE SECTION AND
ALLOWED THE 1/16'S TO FLOAT

SET IN THE CENTER OF THE GRAVEL ROAD AT A
SPLIT DISTANCE FROM THE NORTHEAST CORNER
AND THE SOUTHEAST CORNER OF THE SECTION BY
DAVID ANDERSON RLS#13620

Sec 31, T. 139 N., R. 31 W.

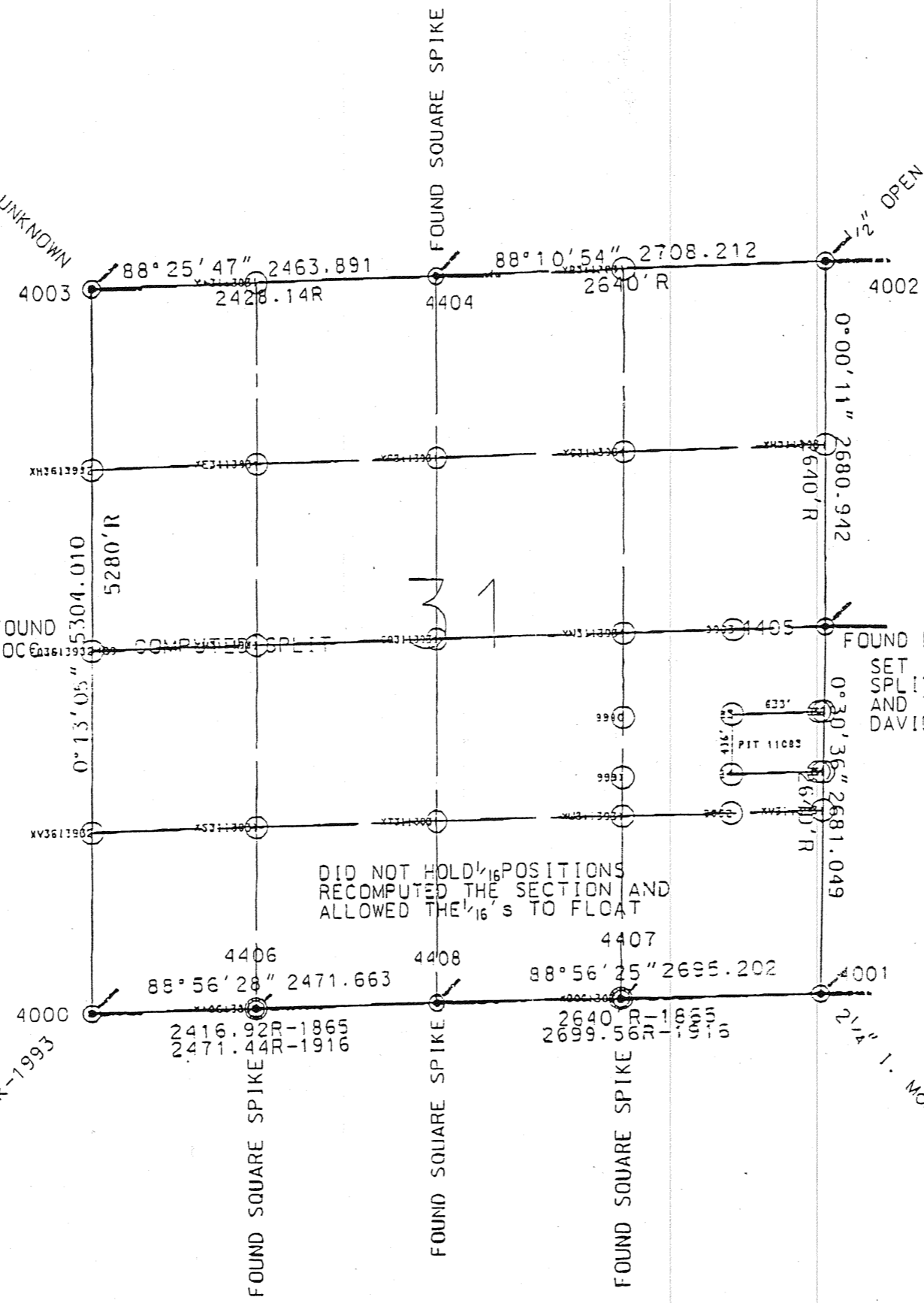
RR SDK-1993

FOUND SQUARE SPIKE

FOUND SQUARE SPIKE

FOUND SQUARE SPIKE

1. Mon-1916



SET BY DAVID ANDERSON RLS#13620
AT THE CL-CL OF ROADS AFTER A LOCAL
RESIDENT, MR. HOLDEN, STATED THAT A
MONUMENT WAS IN THE ROAD AT THAT
LOCATION AND WAS DESTROYED BY ROAD
CONSTRUCTION.

***** SECTION SUBDIVISION 02/10/04 *****

SECTION 31 TOWNSHIP 139N RANGE 31W

CASS SOUTH HARN

X=451611.9850 X=452736.0187 X=454074.9510 X=455428.3750 X=456781.7990
Y=341451.8450 Y=341482.6594 Y=341519.3650 Y=341562.3290 Y=341605.2930

NE3613932-----XA3113931-----NQ3113931-----XB3113931-----NE3113931

1124.4560 1339.4353 1354.1058 1354.1058
88 25 46.85 88 25 46.85 88 10 54.39 88 10 54.39

1326.0026 1327.9217 1330.1087 1335.2890 1340.4710
180 13 04.77 180 14 37.99 180 07 41.07 180 03 55.28 180 00 11.23

X=451606.9400 X=452730.3662 X=454071.9778 X=455426.8519 X=456781.7260
Y=340125.8520 Y=340154.7497 Y=340189.2597 Y=340227.0408 Y=340264.8220

XH3613932-----XE3113931-----XF3113931-----XG3113931-----XH3113931

1123.7978 1342.0553 1355.4008 1355.4008
88 31 35.46 88 31 35.46 88 24 09.72 88 24 09.72

1326.0026 1327.9165 1330.1087 1335.2890 1340.4710
180 13 04.77 180 14 37.99 180 07 41.07 180 03 55.28 180 00 11.23

X=451601.8950 X=452724.7138 X=454069.0045 X=455425.3288 X=456781.6530
Y=338799.8590 Y=338826.8452 Y=338859.1543 Y=338891.7527 Y=338924.3510

EQ3613932-----XM3113931-----CQ3113931-----XN3113931-----EQ3113931

1123.1431 1344.6789 1356.7159 1356.7159
88 37 23.52 88 37 23.52 88 37 23.52 88 37 23.52

1326.0026 1329.1361 1332.8030 1336.6564 1340.5246
180 13 04.77 180 14 39.54 180 07 41.07 180 19 10.59 180 30 36.14

X=451596.8500 X=452719.0462 X=454066.0253 X=455417.8726 X=456769.7200
Y=337473.8660 Y=337497.7212 Y=337526.3547 Y=337555.1171 Y=337583.8795

XV3613932-----XS3113931-----XT3113931-----XU3113931-----XV3113931

1122.4497 1347.2834 1352.1533 1352.1533
88 46 55.97 88 46 55.97 88 46 52.09 88 46 52.09

1326.0026 1329.1275 1332.8030 1336.6564 1340.5246
180 13 04.77 180 14 39.54 180 07 41.07 180 19 10.59 180 30 36.14

X=451591.8050 X=452713.3786 X=454063.0460 X=455410.4165 X=456757.7870
Y=336147.8730 Y=336168.6058 Y=336193.5550 Y=336218.4815 Y=336243.4080

NE0113832-----XA0613831-----NQ0613831-----XB0613831-----NE0613831

1121.7652 1349.8980 1347.6011 1347.6011
88 56 27.54 88 56 27.54 88 56 24.51 88 56 24.51

