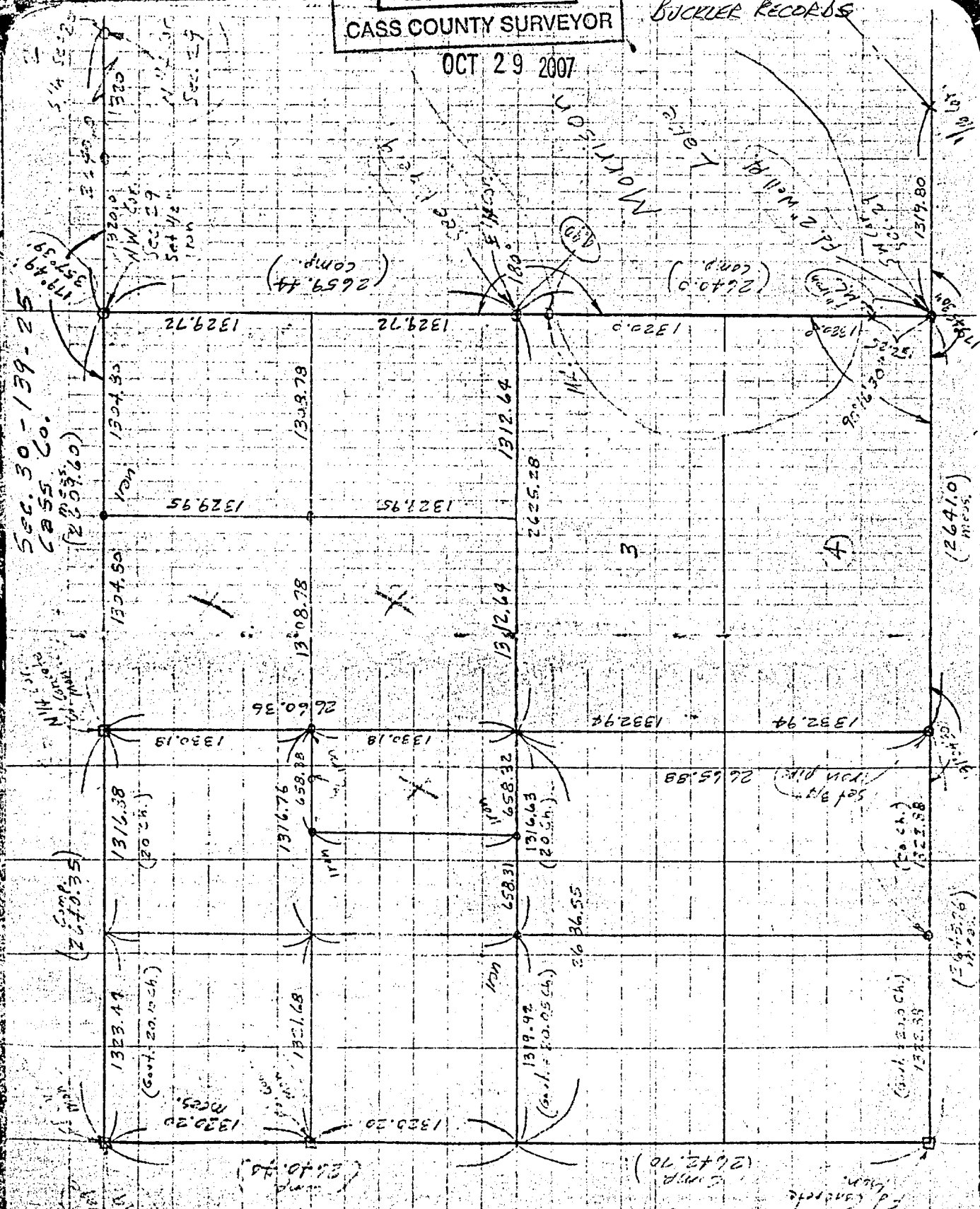


CASS COUNTY SURVEYOR

BUCKER RECORDS

OCT 29 2007

43770
 50-139-25
 19-139-25



SEC. 30-139-25
 CASS CO.
 (2353.60)

(24035)

1330.20
 (cont. 20.12 ch.)

(2659.44)
 (comp.)

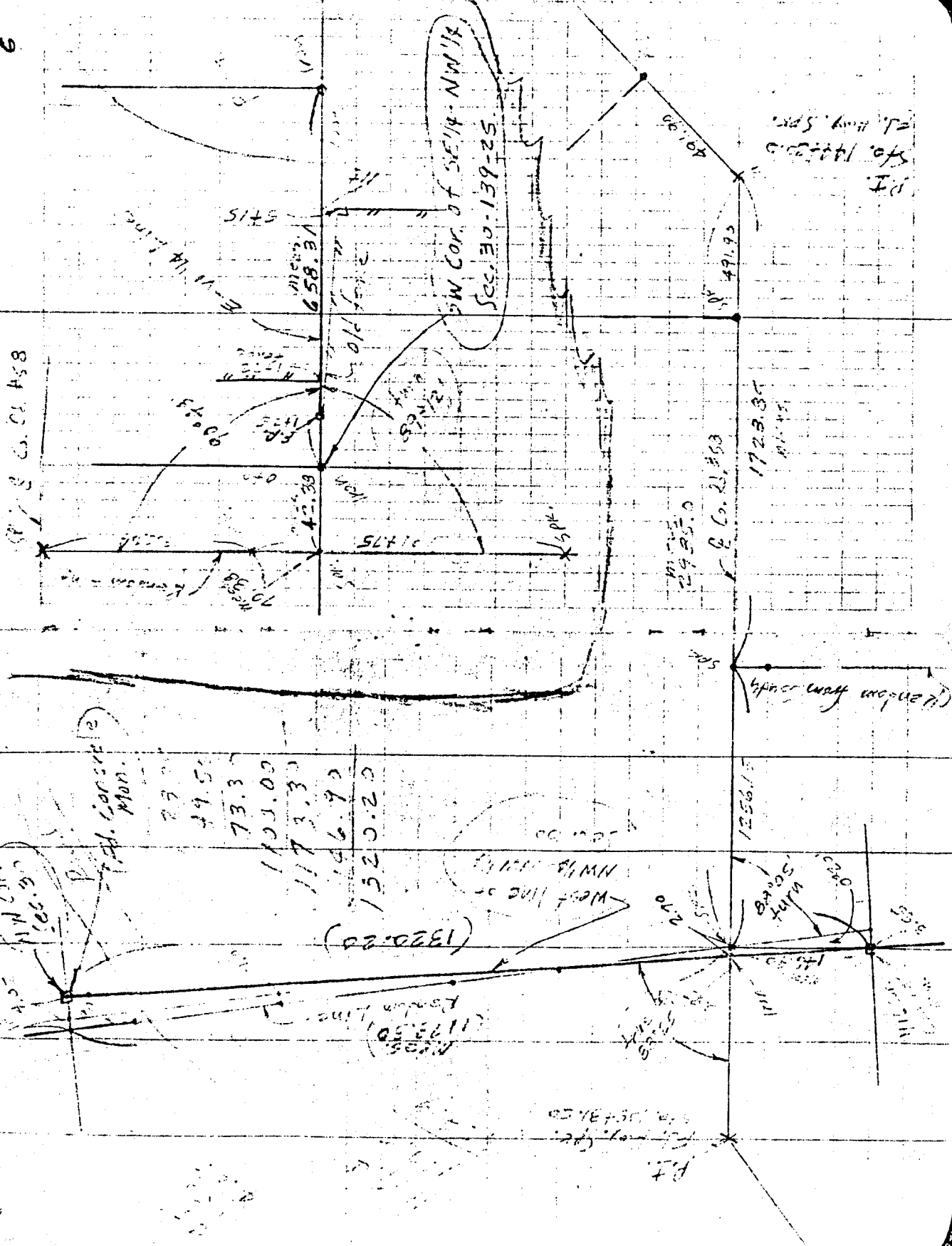
(2640.0)
 (comp.)

Set 1/2 sec 29
 from plat

(cont. 20.12 ch.)
 1332.58

(2641.0)
 (comp.)

(24157.6)
 (cont.)



SP. & Co. Ct. 458

7. A. Converse
Mon.

- 29.00
- 49.50
- 73.30
- 1103.00
- 1173.30
- 1266.90
- 1320.20

(1320.20)
West line of NW 1/4 NW 1/4

NW Cor of Sec 14 NW 1/4
Sec 20-139-22

P.T.
Sto. 1492.00
St. 1100.50

172.35
11.45

1256.15

830.05
1230

2925.0
P. Co. 21.353

491.95
491.95

Wagon road (1890)

P.T.
Sto. 1554.50

E-W 1/4 line
658.3
5715

1017.75
1017.75
1017.75

1017.75
1017.75

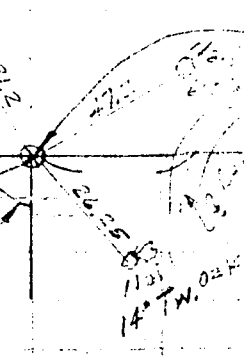
90.45
90.45

1017.75
1017.75

1017.75
1017.75

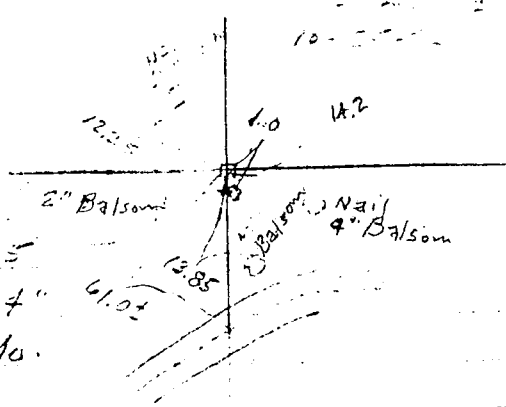
1017.75
1017.75

10-5-76
 N. 1/4 Cor.
 Sec. 19-139-25
 Found 2" Iron
 Pipe up 2 feet.
 Set 1/2" Iron pipe
 on West side
 with Reg. #10940.



13	14
24	31

S.W. Cor
 Sec. 19,
 T-139, R-25
 Found 4" x 4"
 Concrete Mo.
 up 1 1/2'



NE Cor.
 Sec. 19-139-25
 Set 1/2" Iron Pipe
 Steel Fence Post
 on South Side.



E. 1/4 Cor.
 Sec. 19-139-25
 Set Steel Fence
 Post @ old Fence
 Corner.

