

Bob Kovanen

From: Cass MIS Email Account [cass.mis@co.cass.mn.us]
Sent: Tuesday, June 13, 2006 7:12 AM
To: bob.kovanen@co.cass.mn.us
Subject: FW: NE corner 17-133-29

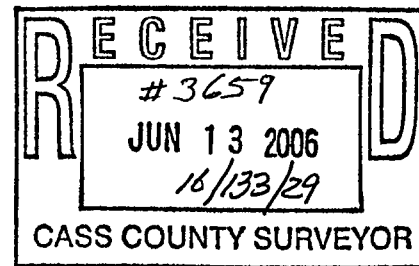
From: Bruce Grivna [mailto:bruce.grivna@westwoodps.com]
Sent: Monday, June 12, 2006 8:40 AM
To: Bob Kovanen
Subject: RE: NE corner 17-133-29

Bob- I will send you the information that we got from MNDOT and Jim Kramer and Jim Nielson. The section breakdown that they are using uses the corner 9.8 to the south of that corner that well shows

Bruce Grivna, LS
Director- Brainerd Office

Westwood Professional Services
423 Laurel St
Brainerd, MN 56401

DIRECT 218-822-4205
CELL 218-820-5260
EMAIL bruce.grivna@westwoodps.com MAIN
218-829-4733 WEB



218-829-1751 FAX
www.westwoodps.com

From: Bob Kovanen [mailto:bob.kovanen@co.cass.mn.us]
Sent: Friday, June 09, 2006 1:13 PM
To: Bruce Grivna; Chris Hoglund
Subject: FW: NE corner 17-133-29

I apologize, the phone rang and I sent the e-mail without the attachment. Here it is.
Bob K.

From: Bob Kovanen [mailto:bob.kovanen@co.cass.mn.us]
Sent: Friday, June 09, 2006 12:54 PM
To: Chris Hoglund; Bruce Grivna
Subject: NE corner 17-133-29

Bruce and Chris,

We started a survey for the Cass Highway Dep't this week in Section 16, T.133 N., and R.29 W. As is our standard practice when working near a highway and as MN/DOT survey reference points were found in some existing tie trees we contacted MN/DOT for information. Today we received data that may present a conflict with the NE corner of Section 17 that Bruce certified in 2003 when platting PRAIRIE WOOD ACRES. The 1977 MN/DOT unrecorded Certificate of Location (.PDF attached) is marked as "REPLACEMENT TIES - NO HISTORT SEARCH MADE", but seems to agree with the location of the spike that this office recovered when doing a quick corner search prior to Sylvan Township doing work on Little Pine Road. This contact is to both make you aware of the above data and to request any additional data you may have that is not indicated on the record C of L.

Regards,
Bob K.

County _____

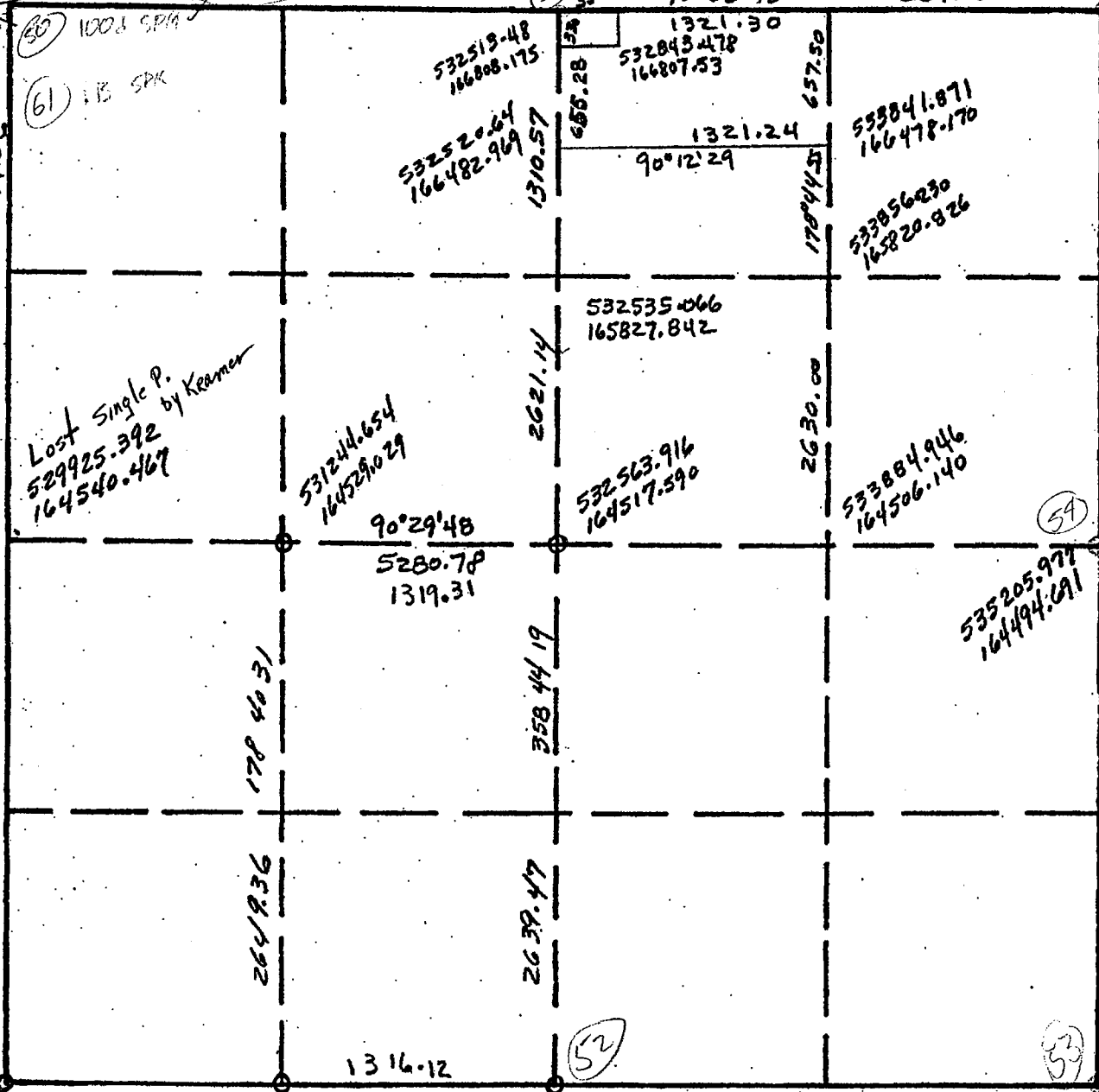
RECORD DATA

TALLO TO BOB
 FITS CASS CO TIES

529860.994
 167198.951

FITS TIES BUT NOT BREAK DOWN

USED FITS NIELSEN KRAMER AT MOUNT



265926

265926 358 36 45

(55) 1003 SPK
 (61) 113 SPK

Lost Single P. by Kramer
 529925.392
 164540.467

178 40 31

90°04'13"

1316.12

531305.902
 161880.372

532519.48
 166808.175
 532520.64
 166482.969

90°29'48"
 5280.78
 1319.31

531244.654
 164529.029

(51)

532506.215
 167138.095
 532836.214
 167137.450

2621.14

532535.066
 165827.842
 532563.916
 164517.590

2639.47

532622.015
 161878.761

(52)

90°06'43"
 1321.30
 532843.478
 164807.53

90°28'45"
 29'20"

657.50
 178°44'55"

2630.00

533884.946
 164506.140

533841.871
 166478.170
 533856.230
 163820.826

533827.513
 167135.513

2642.61

535205.977
 164494.691

(54)

(53)

1319.43

535177.30
 165912

5277.50

35845.32

2639.08

535263.130
 161856.890

2678.80

535148.828
 167132.9

RECEIVED
 JUN 13 2006
 CASS COUNTY SURVEYOR

528

To: Bruce Grivna 829-4733

grivna1.o

Copyright (2000) GEOPAK Corporation
All rights reserved

GEOPAK

Project:
Subject:

Job No. 1 Operator:
Date: Tuesday April 15, 2003 2:23 pm
SYSTEM FIX 4 ASEC 2 BEAR PRI 0 RED NE STA 2 FILE: 'GRIVNA'

* 1 pri poi 20 21 22 8002 8003

Point	North	East	Station	Elevation
20	161,878.7610	532,622.0150	0+00.00	
21	167,138.0950	532,506.2150	0+00.00	
22	167,198.9510	529,860.9940	0+00.00	
8002	161,881.9842	529,989.7896	0+00.00	
8003	164,540.4673	529,925.3918	0+00.00	

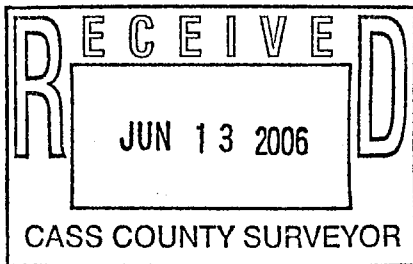
Bruce,

8002 is a double proportion position.

20 was re-set by Cass county after an overlay, Nielsen feels the old position is different by 1/2 foot.

I know Nielsen has all of Section 16 if you want to give him a call.

If you need anything else, give me a call.

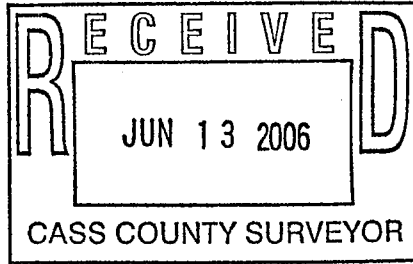


Jim K.

S 88° 40' 56" E
2645.92'

PK NAIL

22
IRON MON



N 01° 23' 15" W
2659.26'

N 01° 15' 41" W
5260.61'

8003
LOST

SEC

N 01° 23' 15" W
2659.26'

S 89° 55' 47" E
2632.23'

20
PK NAIL

8002
LOST