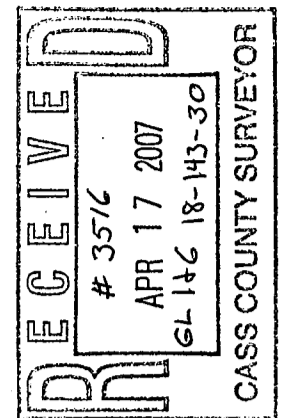
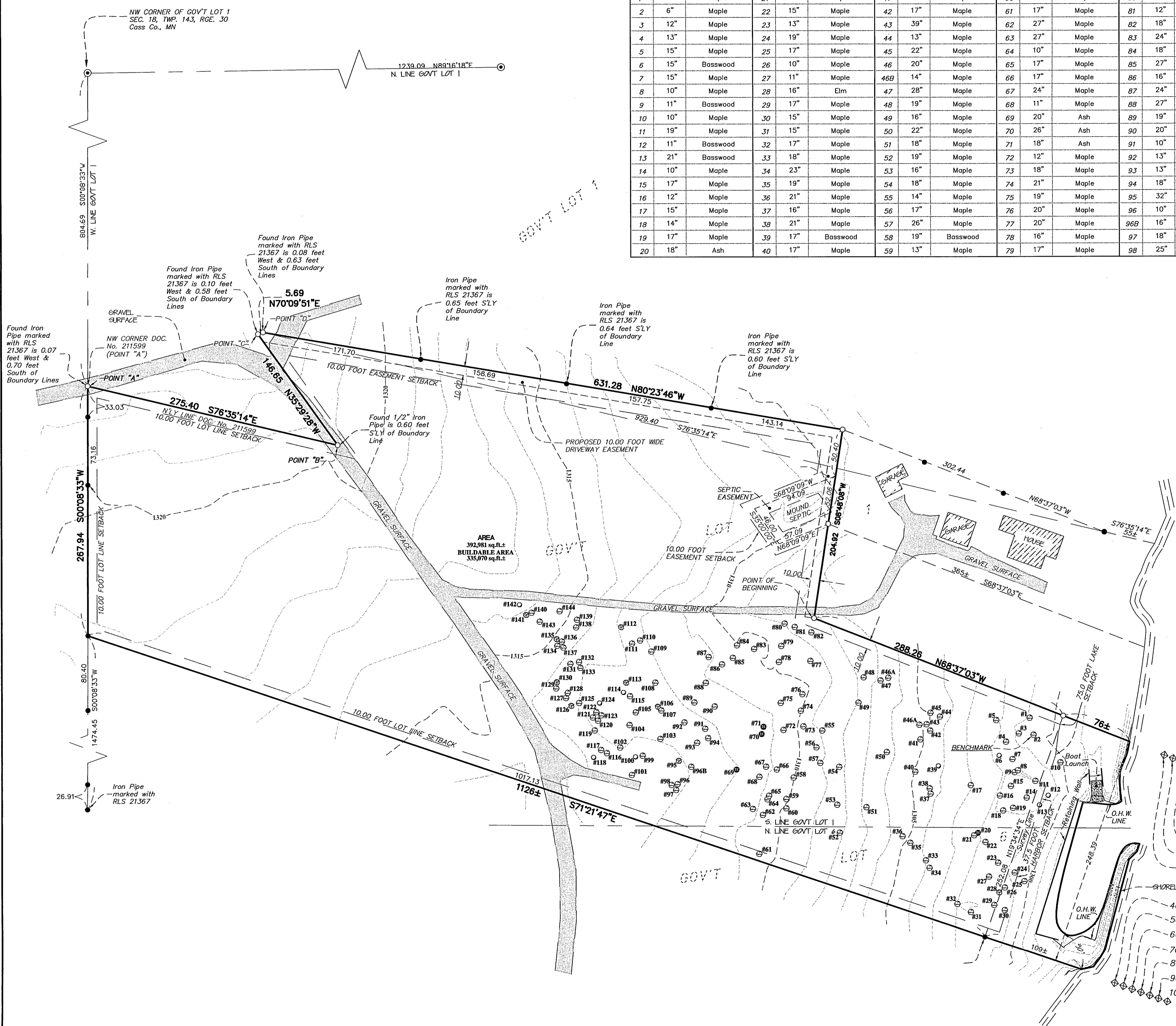


# CERTIFICATE OF SURVEY



I hereby certify that this survey, plan or report was prepared by me or under my direct supervision and that I am a duly licensed land surveyor under the laws of the State of Minnesota.  
 Dated this 17th day of April, 2007.  
 By: *Bruce W. Skipton*  
 Bruce W. Skipton, Minnesota License No. 17768

#	Trunk Size	Tree Species	#	Trunk Size	Tree Species	#	Trunk Size	Tree Species	#	Trunk Size	Tree Species	#	Trunk Size	Tree Species	#	Trunk Size	Tree Species
1	3"	Maple	21	21"	Maple	41	—	Maple	60	15"	Maple	80	36"	Maple	99	20"	Maple
2	6"	Maple	22	15"	Maple	42	17"	Maple	61	17"	Maple	81	12"	Maple	100	18"	Basswood
3	12"	Maple	23	13"	Maple	43	39"	Maple	62	27"	Maple	82	18"	Maple	101	27"	Maple
4	13"	Maple	24	19"	Maple	44	13"	Maple	63	27"	Maple	83	24"	Maple	102	25"	Maple
5	15"	Maple	25	17"	Maple	45	22"	Maple	64	10"	Maple	84	18"	Maple	103	12"	Maple
6	15"	Basswood	26	10"	Maple	46	20"	Maple	65	17"	Maple	85	27"	Maple	104	10"	Maple
7	15"	Maple	27	11"	Maple	46B	14"	Maple	66	17"	Maple	86	16"	Maple	105	13"	Maple
8	10"	Maple	28	16"	Elm	47	28"	Maple	67	24"	Maple	87	24"	Maple	106	21"	Elm
9	11"	Basswood	29	17"	Maple	48	19"	Maple	68	11"	Maple	88	27"	Maple	107	18"	Maple
10	10"	Maple	30	15"	Maple	49	16"	Maple	69	20"	Ash	89	19"	Maple	108	15"	Maple
11	19"	Maple	31	15"	Maple	50	22"	Maple	70	26"	Ash	90	20"	Maple	109	16"	Maple
12	11"	Basswood	32	17"	Maple	51	18"	Maple	71	18"	Ash	91	10"	Maple	110	19"	Maple
13	21"	Basswood	33	18"	Maple	52	19"	Maple	72	12"	Maple	92	13"	Maple	111	17"	Maple
14	10"	Maple	34	23"	Maple	53	16"	Maple	73	18"	Maple	93	13"	Maple	112	6"	Elm
15	17"	Maple	35	19"	Maple	54	18"	Maple	74	21"	Maple	94	18"	Maple	113	22"	Elm
16	12"	Maple	36	21"	Maple	55	14"	Maple	75	19"	Maple	95	32"	Elm	114	28"	Basswood
17	15"	Maple	37	16"	Maple	56	17"	Maple	76	20"	Maple	96	10"	Maple	115	24"	Maple
18	14"	Maple	38	21"	Maple	57	26"	Maple	77	20"	Maple	96B	16"	Maple	116	17"	Maple
19	17"	Maple	39	17"	Basswood	58	19"	Basswood	78	16"	Maple	97	18"	Maple	117	18"	Maple
20	18"	Ash	40	17"	Maple	59	13"	Maple	79	17"	Maple	98	25"	Maple	118	20"	Basswood
															119	19"	Maple
															120	12"	Maple
															121	18"	Maple
															122	18"	Maple
															123	20"	Maple
															124	15"	Basswood
															125	14"	Maple
															126	24"	Elm
															127	18"	Maple
															128	25"	Maple
															129	17"	Maple
															130	29"	Elm
															131	18"	Maple
															132	21"	Maple
															133	24"	Maple
															134	20"	Maple
															135	28"	Elm
															136	25"	Maple
															137	28"	Maple
															138	18"	Maple

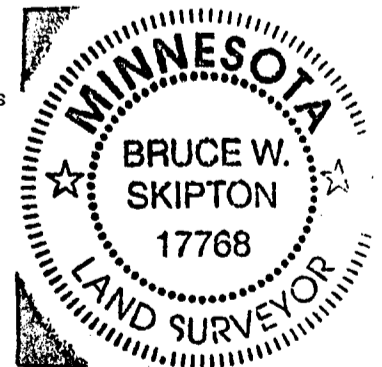


**DESCRIPTION:**  
 Those parts of Government Lots 1 and 6 of Section 18, Township 143, Range 30, Cass County, Minnesota, described as follows:  
 Commencing at the northwest corner of said Government Lot 1; thence on an assumed bearing of South 00 degrees 08 minutes 33 seconds West, along the west line of said Government Lot 1, a distance of 804.69 feet to the northwest corner of the parcel of land described in Document Number 211599 on file in the office of the County Recorder, Cass County, Minnesota, said point also being hereinafter referred to as Point "A"; thence South 76 degrees 35 minutes 14 seconds East, along the northerly line of said Document Number 211599, a distance of 275.40 feet to a point hereinafter referred to as Point "B"; thence North 35 degrees 29 minutes 28 seconds West a distance of 146.65 feet to a point hereinafter referred to as Point "C"; thence North 70 degrees 09 minutes 51 seconds East a distance of 5.69 feet to a point hereinafter referred to as Point "D"; thence South 76 degrees 35 minutes 14 seconds East a distance of 929.40 feet; thence North 68 degrees 37 minutes 03 seconds West a distance of 302.44 feet; thence South 08 degrees 48 minutes 08 seconds West a distance of 204.92 feet to the point of beginning of the parcel of land to be described; thence North 80 degrees 23 minutes 46 seconds West a distance of 631.28 feet to said Point "D"; thence South 70 degrees 09 minutes 51 seconds West a distance of 5.69 feet to said Point "C"; thence South 35 degrees 29 minutes 28 seconds East a distance of 146.65 feet to said Point "B"; thence North 76 degrees 35 minutes 14 seconds West a distance of 275.40 feet to said Point "A"; thence South 00 degrees 08 minutes 33 seconds West, along said west line of Government Lot 1, a distance of 267.94 feet; thence South 71 degrees 21 minutes 47 seconds East a distance of 1126 feet, more or less, to the shoreline of Leech Lake; thence Northerly, Southwesterly, Westerly, Northerly, Easterly and Northerly, along said Leech Lake shoreline, to the line that bears South 68 degrees 37 minutes 03 seconds East from said point of beginning; thence North 68 degrees 37 minutes 03 seconds West a distance of 364 feet, more or less, to the point of beginning.

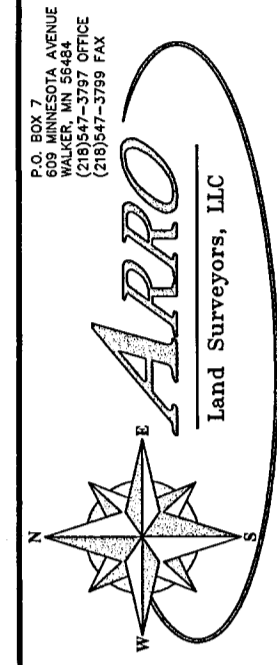
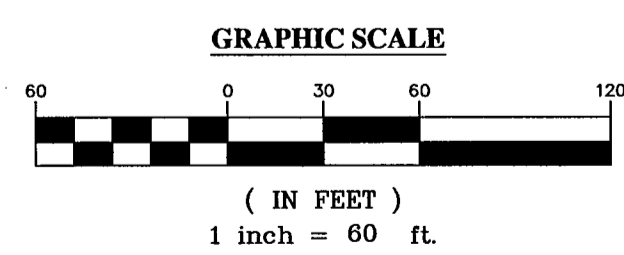
Said parcel contains 9.0 acres of land, more or less, and is subject to existing easements of record.

Date: March 22, 2007  
 Top of Ice Elevation = 1293.78 feet (NGVD29)  
 MnDnR Ordinary Highwater Elevation = 1294.9 feet (NGVD29)

- SURVEYOR NOTES:**
- Bearing Orientation: The west line of Government Lot 1 of Section 18, Township 143, Range 30 is assumed to have a bearing of South 00 degrees 08 minutes 33 seconds West.
  - Benchmark: Spike in the Northeast side of a six inch Maple. Elevation = 1301.76 feet (NGVD 29).
  - The field survey was completed on April 4, 2007.
  - Arro Land Surveyors, LLC has made no investigation or independent search for easements of record, encumbrances, restrictive covenants, ownership title evidence, or any other facts that an accurate and current title search may disclose.



- LEGEND**
- DENOTES 1/2 INCH x 14 INCH IRON PIPE SET AND MARKED WITH RLS 17768 CAP.
  - DENOTES FOUND BRASS DISK MONUMENT
  - DENOTES FOUND SURVEY MONUMENT
  - DENOTES MAPLE TREE
  - DENOTES BASSWOOD TREE
  - DENOTES ASH TREE
  - DENOTES ELM TREE
  - O.H.W. DENOTES ORDINARY HIGHWATER
  - DENOTES 5 FOOT CONTOUR INTERVAL
  - DENOTES 1 FOOT CONTOUR INTERVAL



**TOPOGRAPHIC SURVEY**  
 PARTS OF GOVERNMENT LOTS 1 & 6  
 OF SEC. 18, TWP. 143, RGE. 30,  
 CASS CO., MN

**CLIENT:**  
 Dustin Zacher  
 P.O. Box 1590  
 Walker, MN 56484

DESIGNED BY:	DRAWN BY:	JMSL
APPROVED BY:	BWL	JOB NUMBER: 05-022
NO. 1 DATE BY:	REVISION DESCRIPTION	
NO. 2 DATE BY:	REVISION DESCRIPTION	
NO. 3 DATE BY:	REVISION DESCRIPTION	