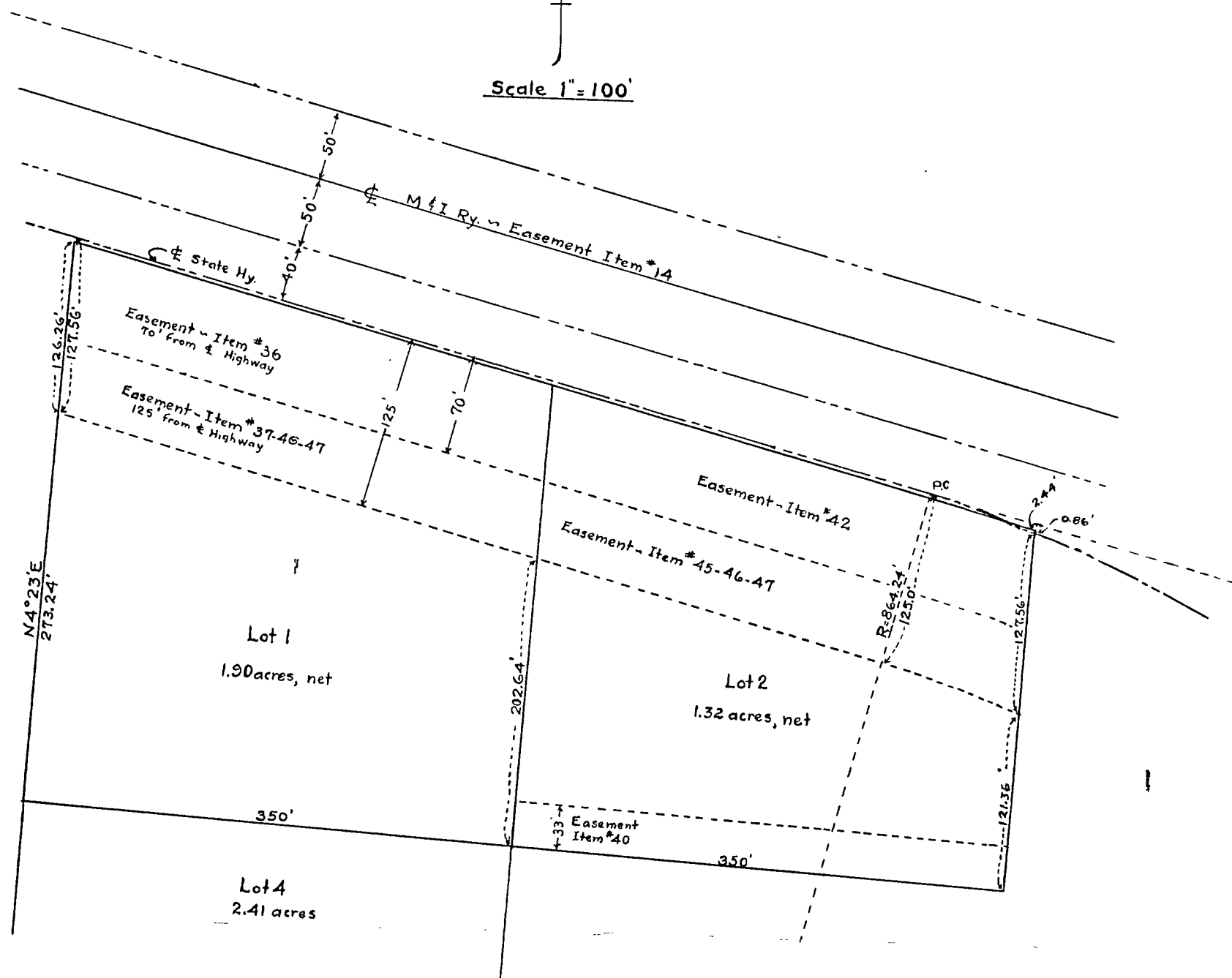


EASEMENT MAP
 Lots 142, Block 5, Plat of
COMMERCIAL CLUB ADDN
 to
VILLAGE OF WALKER, MINN.

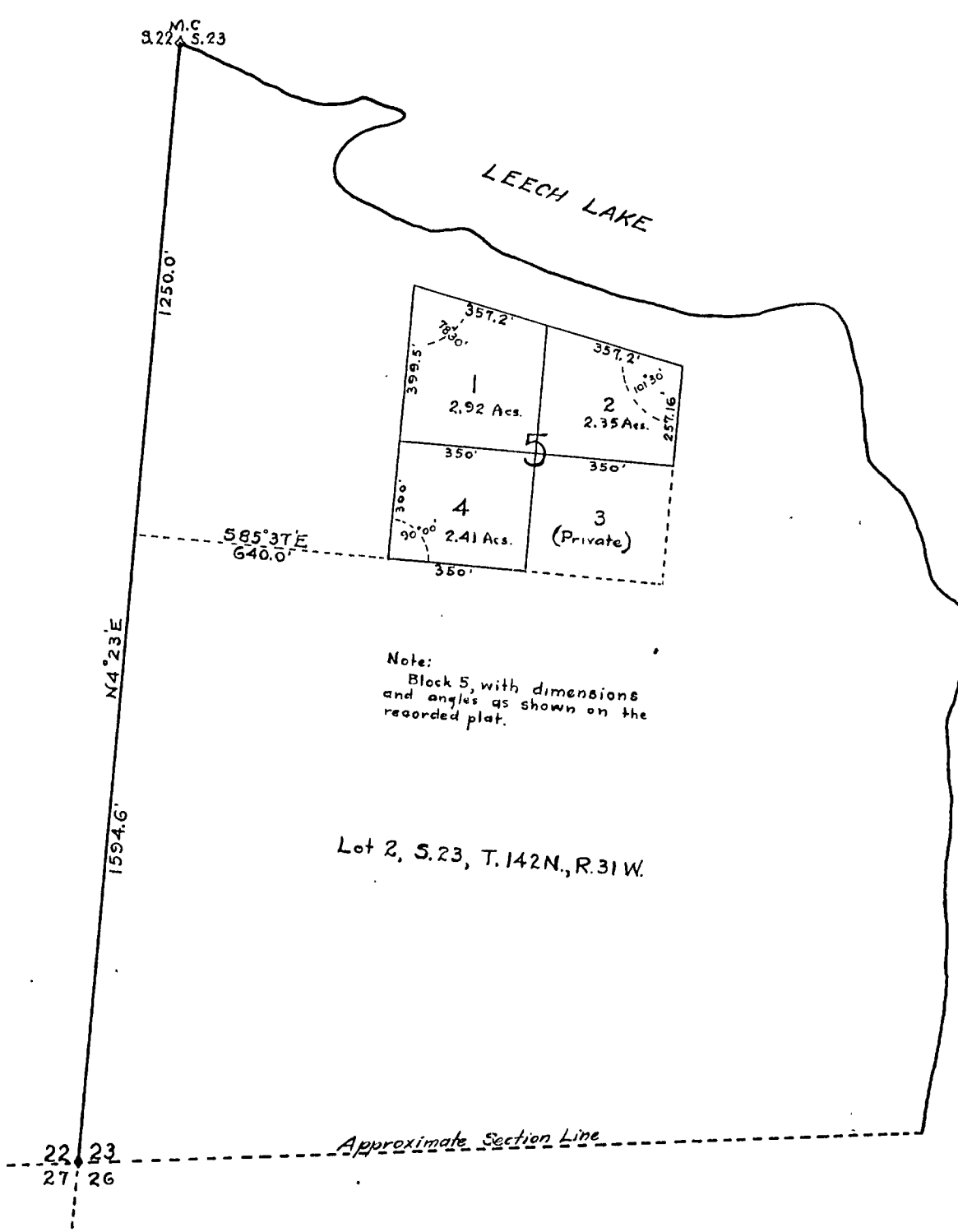


Scale 1" = 100'



LOCATION MAP

Showing location of Block 5,
 Commercial Club Addn, Village of
 Walker, in Lot 2, S.23, T.142 N.,
 R.31W., 5th PM.
 Scale 1" = 400'



CERTIFICATE

I hereby certify that the
 "Easement Map" and "Location
 Map" are correct and accurate,
 to the best of my belief and
 knowledge.

Carl B. Steadman
 Foreman, C & M C O U T

23/142/31