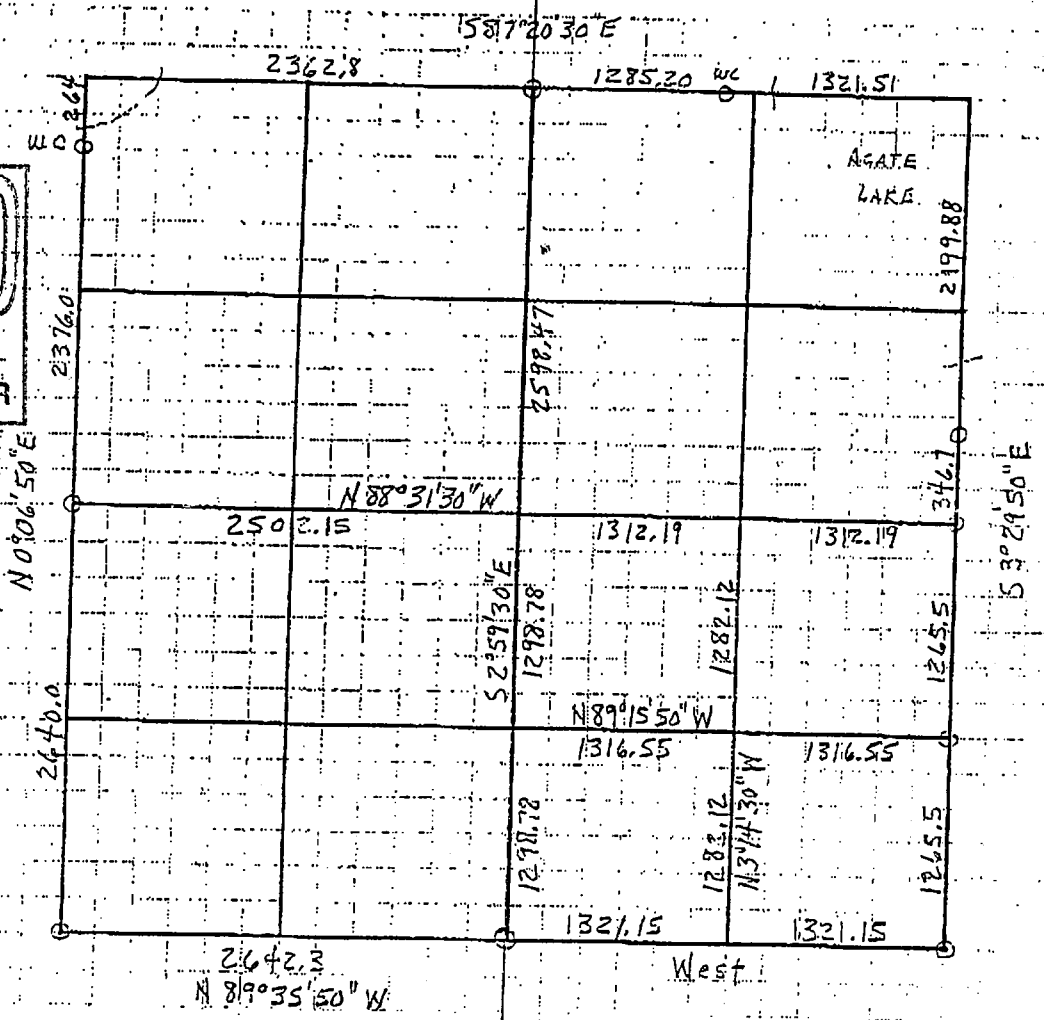


6-134-29

RECEIVED
 # 3319
 JAN 24 2007
 L&A 6-134-29
 CASS COUNTY SURVEYOR



Subdiv. & Ties by Anderson

SW Cor.
 8 W. Pine NE 9.1
 16 Norway SE 66.7
 10 W. Oak NW 119.6

South 1/4
 14 Norway SE 98.1
 10 Norway South 47.8
 12 Norway SW 58.2

SE Cor.
 16 R. Oak NW 35.85
 18 R. Oak SW 46.4
 20 R. Oak SE 48.03

East 1/4
 5 Ash East 19.0
 8 Maple WNW 13.8
 6 Birch SE 34.25

West 1/4
 3 W. Pine WNW 41.3
 6 W. Pine ENE 37.85
 4 W. Pine SE 51.3

W.C. 264' from NW Cor
 14 R. Oak SE 42.45
 Paw. Pale. SSW 36.85
 14 Poplar SW 51.65

North 1/4
 12 Birch NW 84.55
 4 W. Oak North 78.5
 8 Norway NE 90.35

W.C. on North line
 14 J. Pine NNW 25.75
 8 Birch NE 17.5
 10 Aspen SSE 17.45