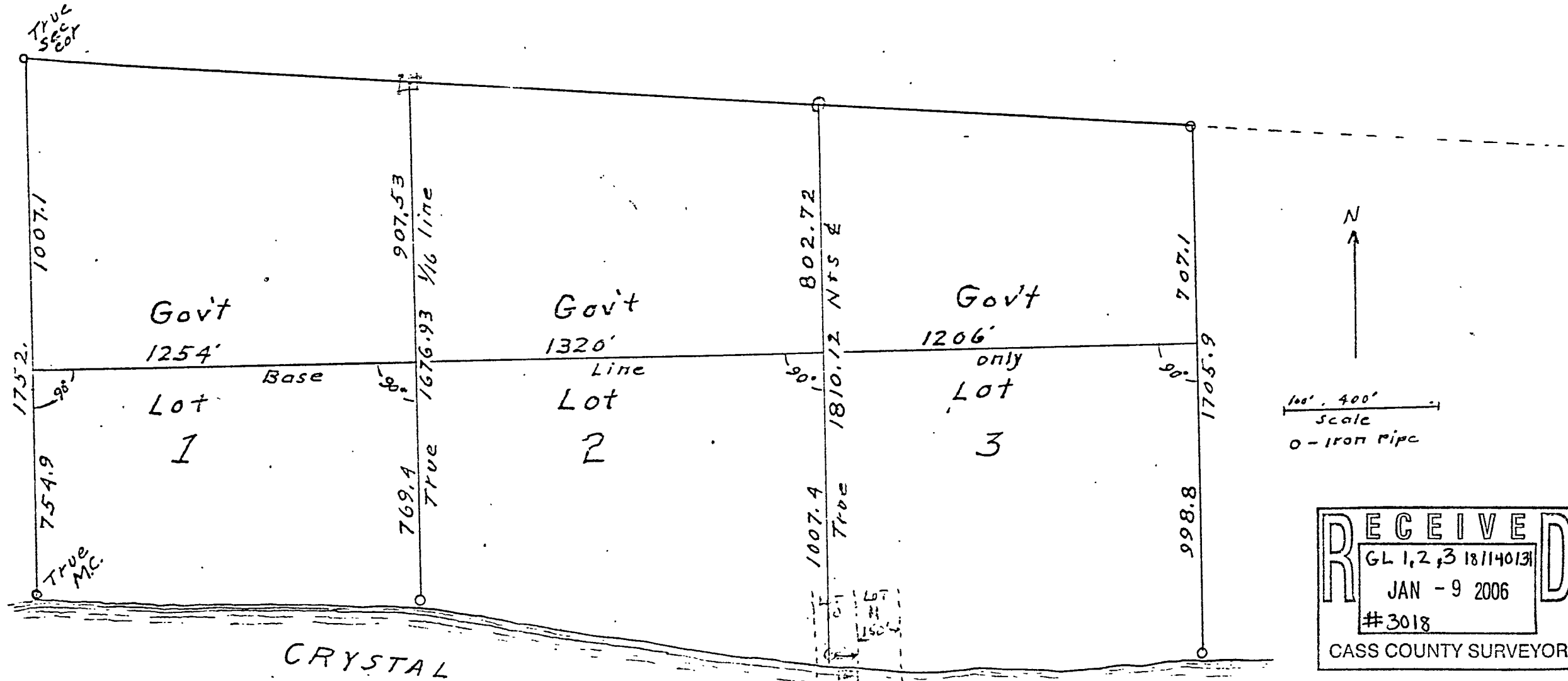


Plat showing Gov't lots 1-2 and 3 Sec. 18 T. 140^N R. 31^W
 Cass Co. Minn. Said lots are guaranteed to be within
 the lines shown by this map.
 Surveyed by John W. Curo Walker Minn.
 May 8th 1948



RECEIVED
 GL 1, 2, 3 18/140131
 JAN - 9 2006
 #3018
 CASS COUNTY SURVEYOR

LAKE
 May 8th
 1948
 John W. Curo
 Minn 1428 Seal