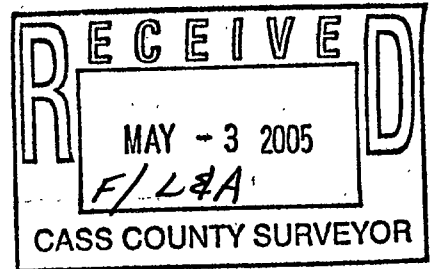


33-139-29



File # 367

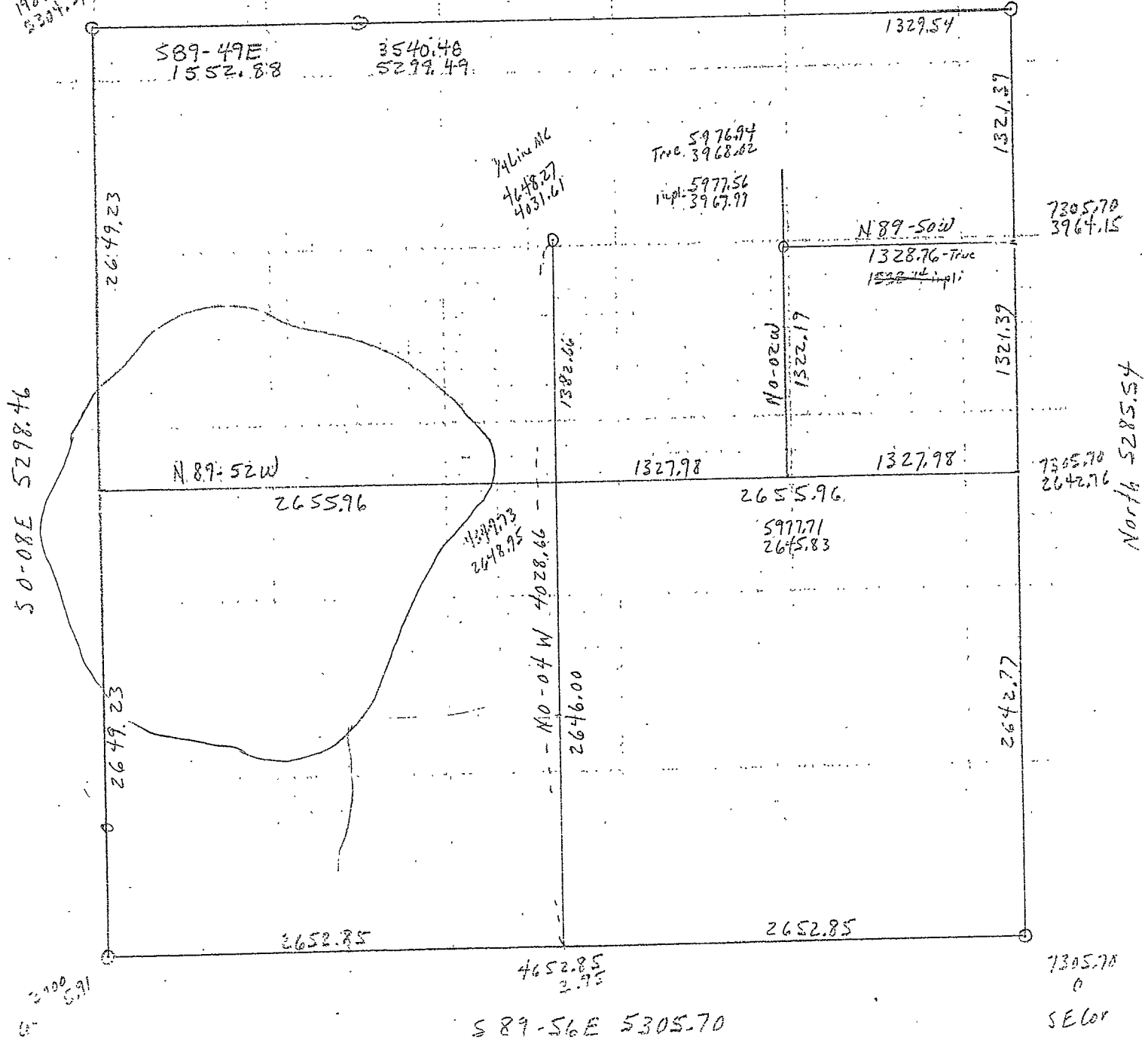
473

#2712

1987.61
5304.37

N 89-48W 5318.14

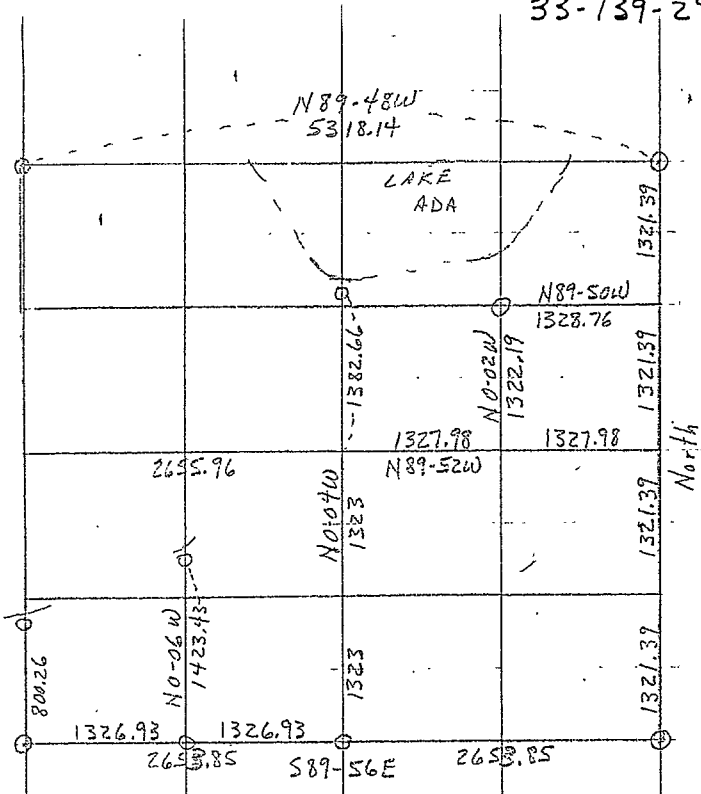
7305.70
5285.54



33-139-29

NW 1/4 +
SE 1/4
+ SW 1/4 +
SE 1/4
of
Sec 4

50-08E 5298.46



NW Cor. 2 1/2" Pipe + 1" Pipe over
 10" J. Pine S 05 W 31.20
 10" J. Pine S 68 W 73.39

So. 1/4 Cor. 1 1/2" Pipe
 10" R. Oak NW 58.40
 6" R. Oak NNW 60.35
 8" R. Oak SSE 65.85
 } To face of lower blaze
 } No nails

W. 1/4 Cor. on So. line - 3/4" Pipe
 6" R. Oak (Camp) N 20 E 36.40
 10" R. Oak N 32 W 58.77

SW Cor. 2 1/2" Capped Pipe
 6" J. Pine N 53 E 67.20
 NW Cor. Stone Blk. S 26 E 105.25
 From corner of Four Pole S 44 W 56.37

RECEIVED
 MAY - 3 2005
 F/L&A
 CASS COUNTY SURVEYOR