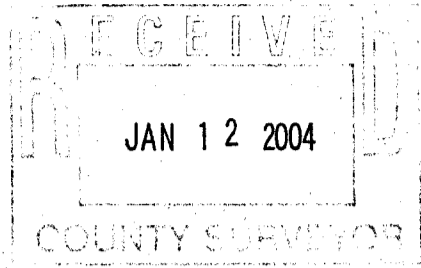
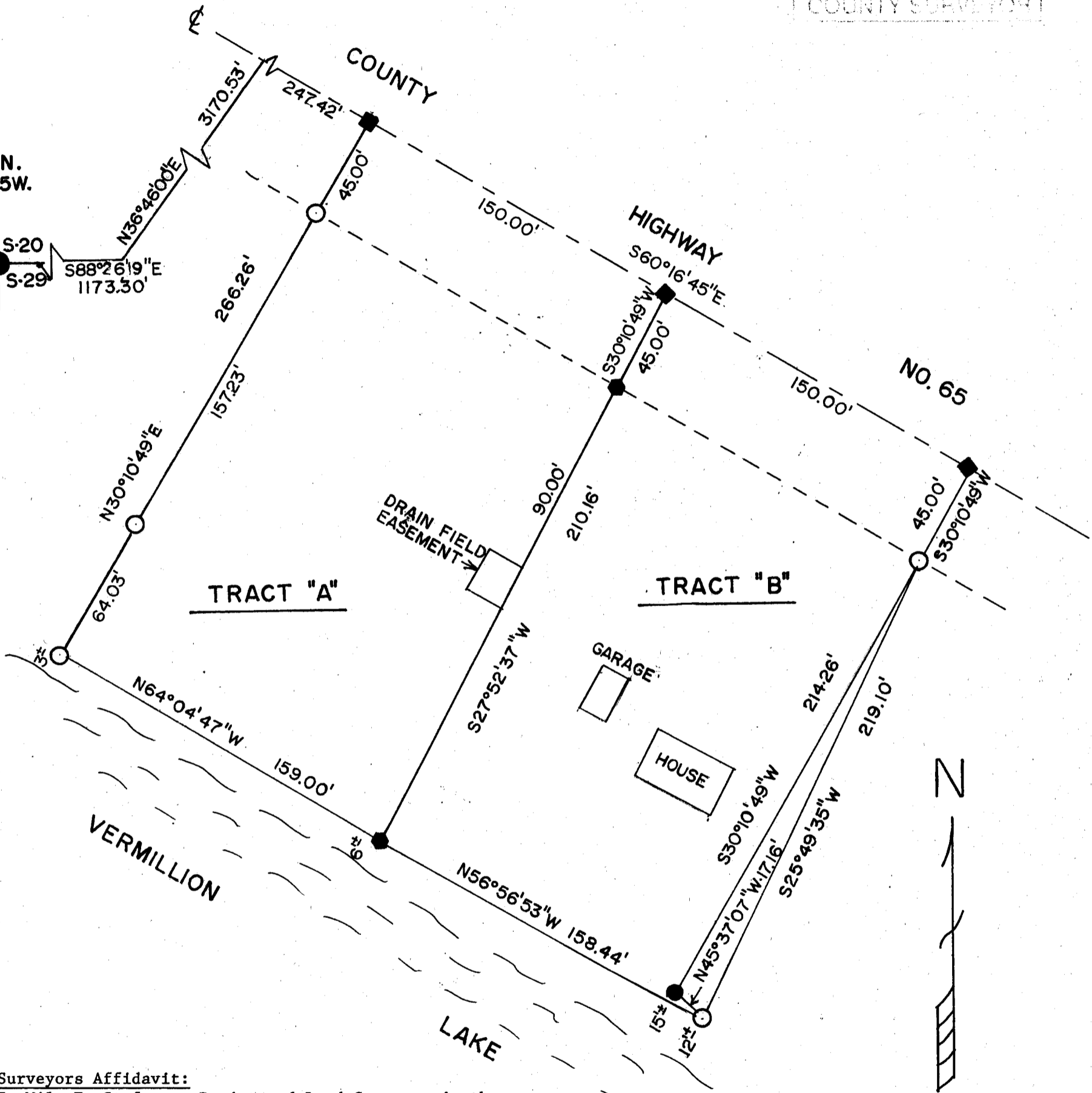
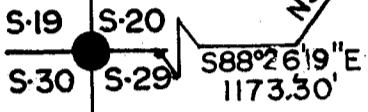


# CERTIFICATE of SURVEY

PART OF U.S. GOVERNMENT LOT 1, SECTION 20, TOWNSHIP 143 NORTH,  
RANGE 25 WEST OF THE 5TH PRINCIPAL MERIDIAN  
CASS COUNTY, MINNESOTA



T.143N.  
R.25W.



**Surveyors Affidavit:**

I, Milo E. Stefan, a Registered Land Surveyor in the State of Minnesota (RLS #12261), and at the request of Paul and Loretta Graf have located and restored the Mustonen and Landecker surveys, replaced a missing monument and identified a "gap" between the Mustonen and Landecker surveys. I certify that this plat drawing is a true and correct representation of the properties surveyed to the best of my abilities.

*Milo E. Stefan*  
Milo E. Stefan  
RLS #12261

*11/12/03*  
Dated

SCALE: 1" = 50'

Bearings from Mustonen's survey from the West.



**LEGEND**

- U.S. General Land Office Corner
- Found Iron Pipe From Previous Surveys of Mustonen and Landecker
- Restored Mustonen Monument
- Set 1/2" x 24" Re-bar/Plastic Cap (RLS #12261)
- Set PK Nail in Highway Surface