

53  
FIP 2.5" PIPE

S 89°27'10" W 5311.50

52  
FIP 2.5" PIPE

51  
FIP SPK W/DISK

SEC 31

S 89°23'12" W 10822.11 (692-90)

51-53  
52 = 4.9  
3002 = 2.00

SEC 2

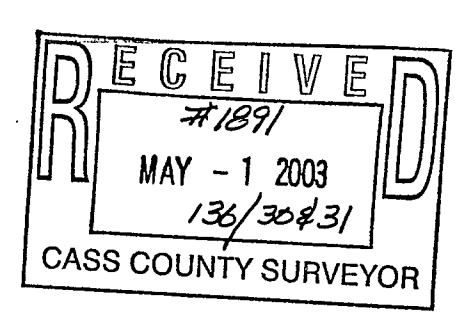
SEE INDIVIDUAL SHEET FOR FINAL BREAKDOWN

800 SCALE

SEC 6

51-50  
3001 = 1.76  
3000 = 0.79

52-50  
3001 = 4.48  
3000 = 3.05  
3000 = 0.08



4109 2976.025 - 1.1718  
53-4008 10266.5

5285<sup>2</sup> mean  
79.6424 - 5285.24 Gov't  
5278.35 CURD  
54  
FIP RR SPK

2645.71  
N 89°31'26"E

54-3035 2639.49  
N 89°26'29"E

533 Gov't  
3035-1003 589-0861 E  
2357.56

1/MS  
20037584

SEC 11

SEE INDIVIDUAL SHEET FOR FINAL BREAKDOWN

SEC 7

1000-2000

SEC 14

SEC 19

SEC 18

$\frac{2615.31}{7900.93} = \frac{x}{7960.41}$  x = 2635.74

$\frac{5280}{10071} = \frac{x}{16131.63}$  x = 26622.32

$\frac{5511}{16071} = \frac{x}{16131.63}$  x = 5531.79

SEC 23

SEC 24

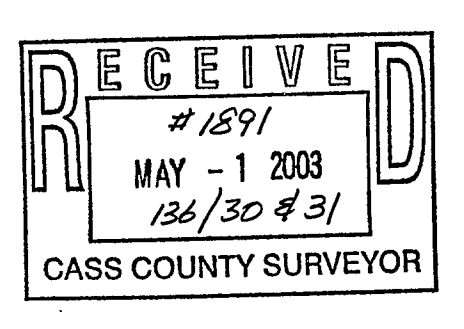
79.90 5273.40 Gov't

7939.80 Gov't

3009-56-7921.23

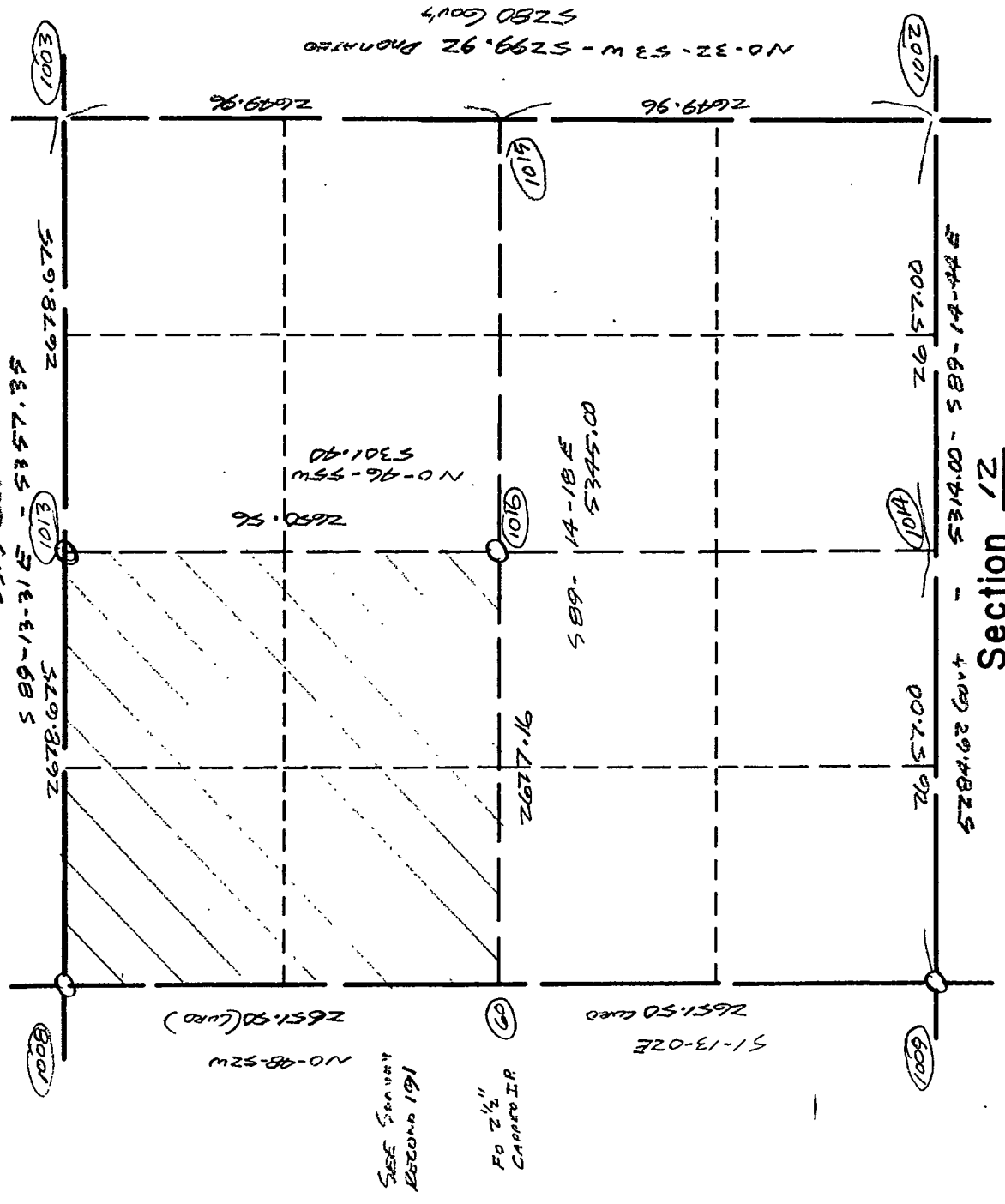
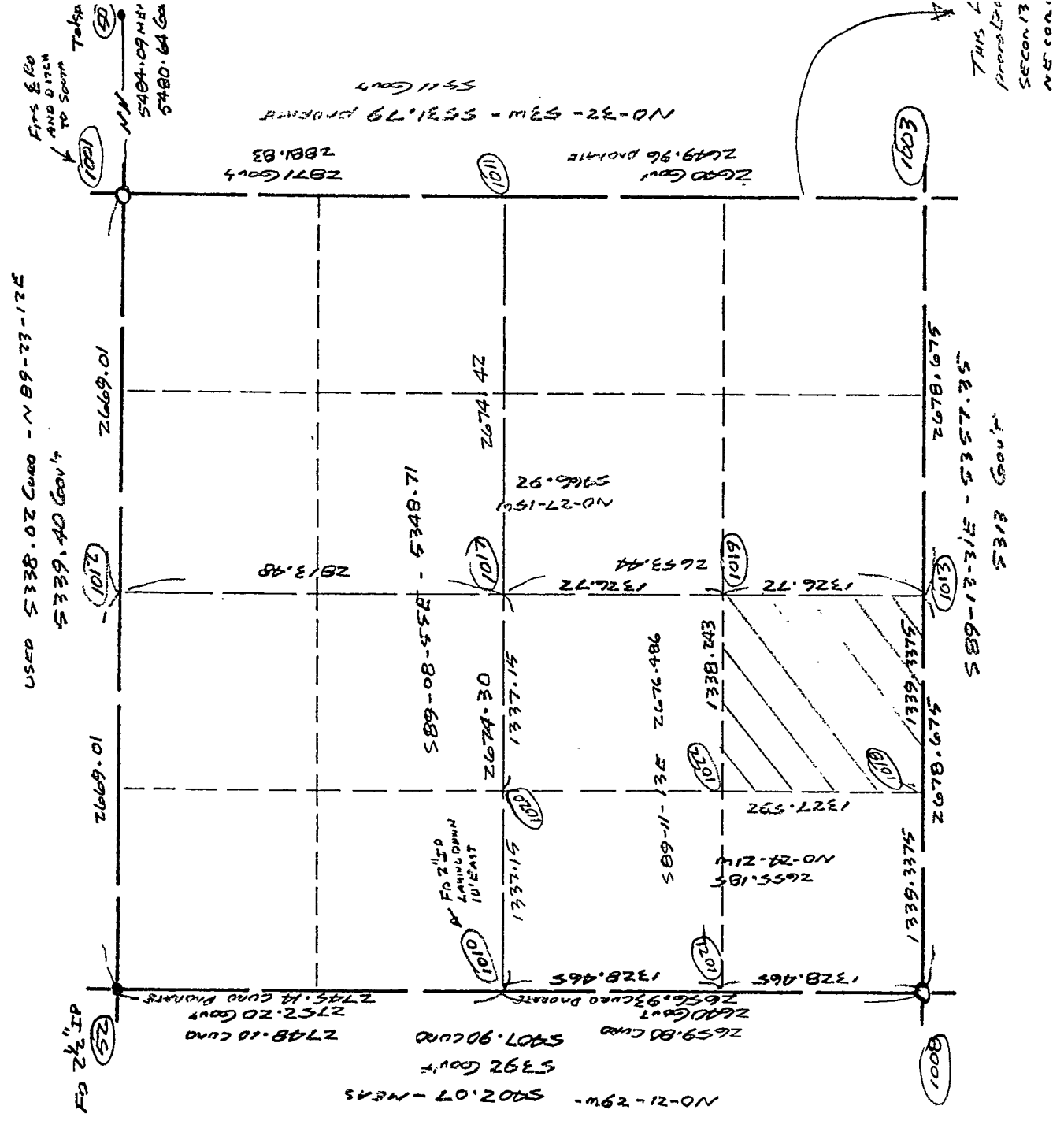
2672.27 3008-3000  
2636.70 Gov't

20.6425 - 012-7.5  
20.75-52.025 - 5303.10 Gov't



**RECEIVED**  
 #1891  
 MAY - 1 2003  
 1/136/31  
 CASS COUNTY SURVEYOR

U.M.S. - 20037584  
 1/136/31  
 WESTWOODS COMP SHEET



U.M.S. - 20037584 T136N R31W MOOSE LAKE TWP.  
 Section 12

1008 USED CURV DISTANCE OF 2651.50 NORTH FROM PT 60 AND ON FENCE LINE - THIS LINE CONTAINS AND LEAD TO WEST. ALSO COMPARE FAVORABLE WITH DISTANCE TO NW COR SEC 1 - 5407.90 CURV VS. 5403.07 WESTWOOD

1009 USED CURV DISTANCE OF 2651.50 SOUTH FROM PT 60 AND ON FENCE LINE NORTH AND SOUTH. FA 1 1/2" x 6" LONG I.O. BRING DOWN APPROXIMATELY 12' WEST

**RECEIVED**  
 #1891  
 MAY - 1 2003  
 12/136/31  
 CASS COUNTY SURVEYOR