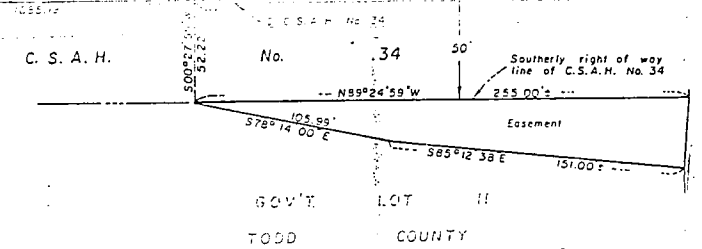
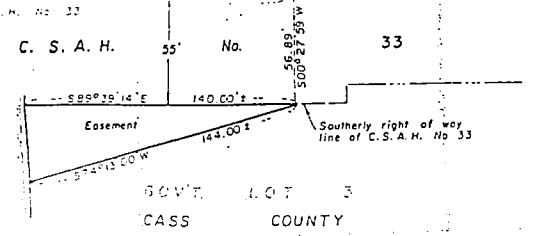


CERTIFICATE OF SURVEY
IN SECTION 4 - 133 - 32
TODD AND CASS COUNTIES
OF MINNESOTA

*For County
Auditors Information*



**CROW
WING
RIVER**



LEGEND
 ○ = Denotes iron monuments found.
 Orientation of this bearing system
 is as shown.
 State of Minnesota, 1913.