

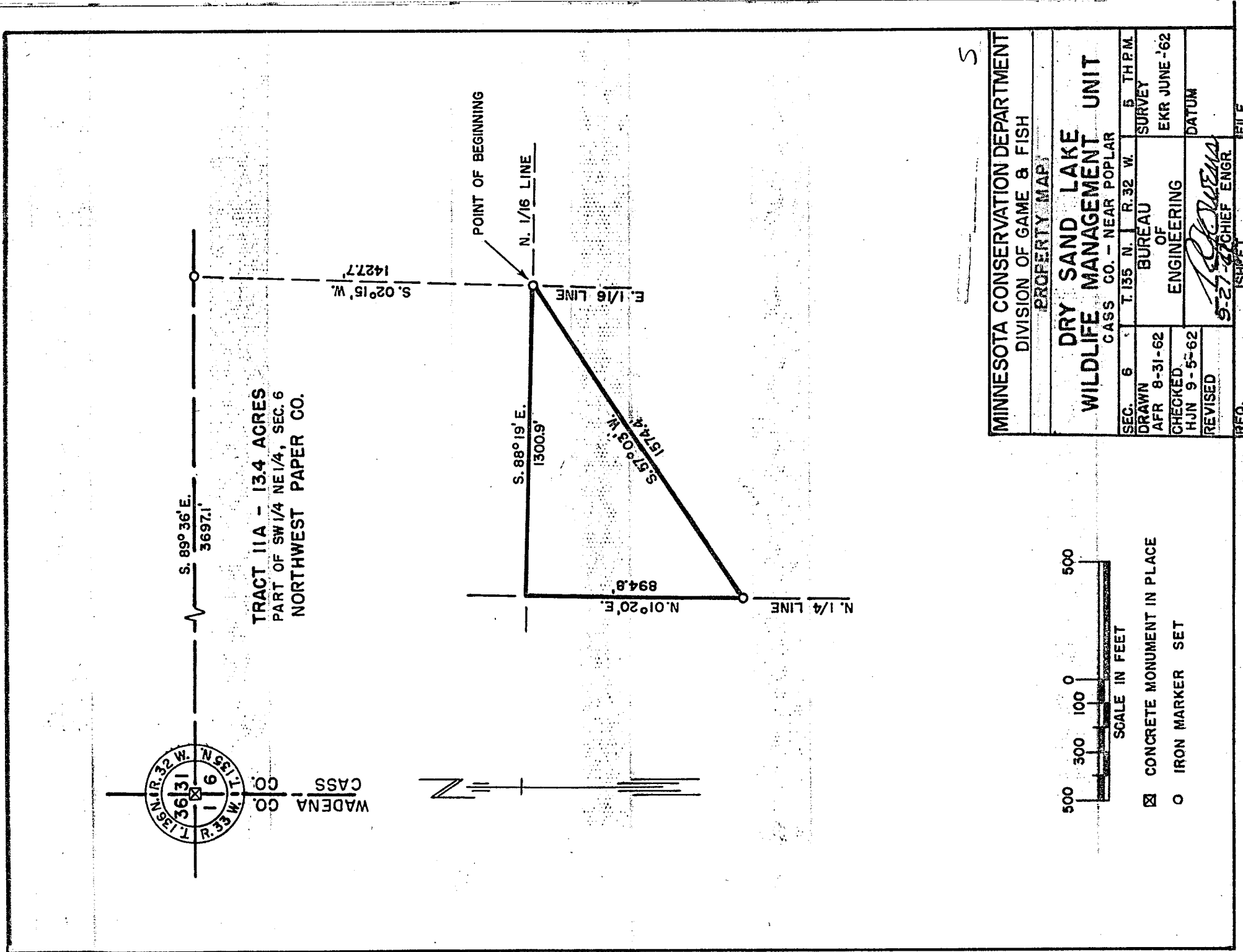
LAND DESCRIPTION
 DRY SAND LAKE WILDLIFE MANAGEMENT UNIT, - CASS COUNTY - G-406X
 TRACT 11A - NORTHWEST PAPER COMPANY

All that part of the southwest quarter of the northeast quarter of Section 6, Twp. 135 N., R. 32 W. of the 5th P.M. bounded by the following described lines, to find the point of beginning, commence at the northwest corner of said Section 6,

- Thence S. 89°-36' E. - 3697.1 ft. along the north line of said Section 6 to the east 1/16 line thereof,
- Thence S. 02°-15' W. - 1427.7 ft. along the east 1/16 line of said Section 6 to the north 1/16 line thereof and the point of beginning,
- Thence S. 57°-03' W. - 1574.4 ft. to the north quarter line of said Section 6,
- Thence N. 01°-20' E. - 894.8 ft. along the north quarter line of said Section 6 to the north 1/16 line thereof,
- Thence S. 88°-19' E. - 1300.9 ft. along the north 1/16 line of said Section 6 to the east 1/16 line thereof and the point of beginning;

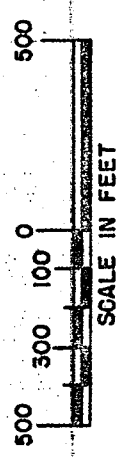
Including all riparian rights to the contained 13.4 acres more or less and subject to existing road easements.

RJO:reg
 9/21/62
 Checked: HRP/ 9-21-62



5

MINNESOTA CONSERVATION DEPARTMENT		DIVISION OF GAME & FISH	
PROPERTY MAP			
DRY SAND LAKE WILDLIFE MANAGEMENT UNIT		CASS CO. - NEAR POPLAR	
SEC. 6	T. 135 N.	R. 32 W.	S. 5 TH. P.M.
DRAWN AFR 8-31-62	BUREAU OF ENGINEERING	SURVEY EKR JUNE '62	
CHECKED HJN 9-5-62	DATE		DATUM
REVISED	S-27-62 CHIEF ENGR.		FILE
REQ.	60-123	9	G-406X



- ☒ CONCRETE MONUMENT IN PLACE
- IRON MARKER SET

MN/DNR

N.E. Cor Sec 36 - 136-33

Ac. T.P. S.E. - 42.2'

B.E. P.P. N.W. - 58.1'

Jarvis Rock - closes side - S.W. 59.0'

NE cor Sec 36 - 136-33

4' g.P. in place

B.C. 10" g. P. W. S.W. 57.9

B.C. Cor Fa. Post N. - 26.9

S.W. Cor Sec 36 - 136-33

Assumed spot in N.S.W. Rd -

B.C. N. 80 to post NE 56.9'

B.C. Jarvis Rock Fa. Post ESE 26.4'

B.C. Cor Fa. Post SW - 47.1'

KA Δ 1			
BS Δ 2	270-00	5276.9	
TO Δ 3	180-00	5280.0	
TO Δ 3A	179-26	5288.7	
TO Δ 4	89-51	967.3	
KA Δ 4			
BS Δ 1	269-51		
TO Δ 5	32-29	275.2	
KA Δ 5			
BS Δ 4	212-25		
TO Δ 6	42-40	209.1	
KA Δ 6			
BS Δ 5	222-40		
TO Δ 7	101-44	386.3	
KA Δ 7			
BS Δ 6	281-44		
TO Δ 8	351-09	1114.1	

N.E. cor. Sec 36.

I.P. in place

N.W. cor. Sec 36.

I.P. in place

Random line. To S.E. cor. Sec 36.

Corrected line to concrete monument to S.E. cor. 36.

P.O.T. To N.E. cor. Sec 36.

Random line



Stations

75-251
25-AM

Ref 8				
BS Δ 7	171-09			
TO Δ 9	46-10	592.1		
Ref Δ 9				
BS Δ 8	226-10			
TO Δ 10	54-42	435.2		
Ref Δ 10				
BS Δ 9	234-42			
TO Δ 11	133-37	845.0		
Ref Δ 11				
BS Δ 10	313-37			
TO Δ 12	105-24	501.0		
Ref Δ 12				
BS Δ 11	285-24			
TO Δ 13	111-25	711.0		
Ref Δ 13				
BS Δ 12	291-25			
TO Δ 14	144-45	599.1		

Main dam
Points

Not Δ 14			
BS Δ 13	324-95		
To Δ 15	151-06	388.5	
Not Δ 15			
BS Δ 14	331-06		
To Δ 16	126-39	455.8	
Not Δ 1			
To Δ 16	89-57	4901.8	

computed

4741.0

8

IRON PIPE IN PLACE
 N.E. COR. SEC. 36
 N.E. COR. SEC 31

N.E. COR. SEC 31

Closure sheet

Not Δ 3A
 BS Δ 1 359-26 5288.7
 TO 17 90-00 2562.5
 TO 18 112-26
 computed distance

Not 18
 BS Δ 3A 292-26
 TO Δ 17 30-14 987.0

Not Δ 17
 BS Δ 3A 270-00 2562.5
 TO Δ 19 90-00 2178.5

Not Δ 19
 BS Δ 17 270-00 2178.5
 TO Δ 10 97-00 282.1

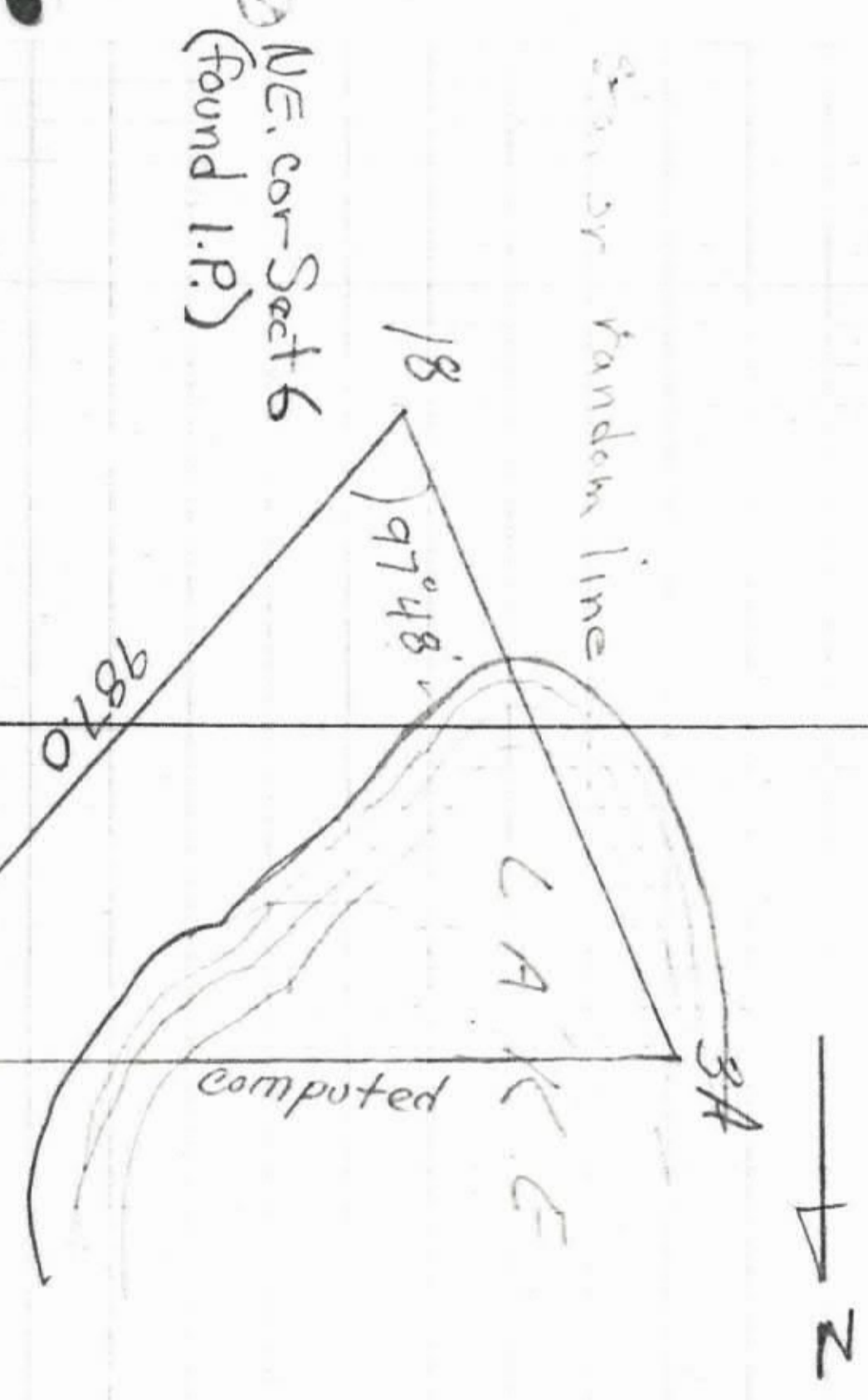
Not Δ 3A
 TO Δ 20 90-24 5020.0
 computed

KA 20
 BS Δ 38 270-24
 TO Δ 44 183-10 2724.0

S.W. cor. Sect 31 concrete monument
 N.W. cor Sect 31
 "

tria. Sta.

sta. on random line



S.W. Cor. Sect. 31
 NE Cor. Sect 6

Old Pa Cor ASSUMED E
 Note No S.E. Cor
 found W.C. point
 111 yds from well
 cor due E. and N. 87°

Not 17A				
BS Δ 3A	270-24	2562.5		
To Δ 21	90-24	477.5		
To Δ 22	90-24	1137.2		US 1
Not Δ 21				
BS Δ 17A	270-24	477.5		
To Δ 23	358-09	800.0		
To Δ "X"	270-24	660.0		S. 1/4 cor Sect 81
Not Δ 23				
BS Δ 21	178-09			
To Δ 24	6-42	530.8		
Not Δ 24				
BS Δ 23	186-42			
To Δ 25	270-17	740.0		
To Δ 26	334-49	392.2		
Not Δ 26				
BS Δ 24	154-49			
To Δ 27	311-57	486.1		

(set I.P.)
Corrected line on South line Sect 31

Set I.P.

Set. I.P. S. 1/4 cor. of S. E. 1/4 of Sect 31

Set I.P. Property corner
in water (computed)

Set I.P.

1/4 cor S. 1/4 line (in Lake)
Set I.P.

Set I.P.

Not A 27	131-57	
BS Δ 26	284-11	239.8
To A 28		
Not A 28		
BS Δ 27	104-11	
To A 29	285-57	437.8
To Δ 25	178-09	734.7
To Δ "X"	178-09	2062.1
Not 29		
BS Δ 28	105-57	
To Δ 30	307-30	561.6
Not Δ 30		
BS Δ 29	127-30	
To Δ 31	295-06	538.9
Not Δ 31		
BS Δ 80	115-06	
To Δ 32	47-43	844.2
Not Δ 32		
BS Δ 31	227-43	
To Δ 33	273-09	455.7

Computed distance
"

Set I.P. N-S. Y line Sect 31

Set I.P.
in water
in water
in water
Assume 5/4 corner 31

Set I.P.

Set I.P.

Set I.P.

Set I.P.

No. 1 Δ 33
 BS Δ 32 93.09
 TO Δ 34 249.45 1234.9

No. 2 Δ 34
 BS Δ 33 69.45
 TO Δ 3A 179.26 2904.2

No. 3 Δ 2
 BS Δ 1 90.00 5276.9
 TO Δ 35 180.00 5278.7

No. 4 Δ 35
 BS Δ 2 380.00 5278.7
 TO Δ 32 90.00 5329.2

$T_r = 1/2$

BS Δ 1 359.26 5288.7
 TO Δ 36 359.26 660.0
 TO Δ 37 270.00 660.0

No. 5 Δ 37
 BS Δ 32 90.00 660.0
 TO Δ 36 44.46 927.8

Computed Dis @ Angle:

Set I.P. on W. Line Sect 31

SE. cor. Sect. 31

NW. cor. Sec 36
 NE. cor. Sec 36
 SW. cor. Sec 36

SET I.P.
 SET I.P.

N 432	359.26	5282.7
B 431	179.29	2024.6
To A 39	179.29	5385.8
N 432		
B 430	270.24	1959.2
To A 40	179.29	658.2
N 441		
B 440	359.29	658.2
To A 43	90.24	640.8
N 442		
B 441	270.24	640.8
To A 44	179.29	2700.0
N 443		
B 442	359.29	2700.0
To A 44	90.00	569.0

NW cor Dec 6 - 135-32

Set I.P. S.W. cor To 10² Dec 6 - 135-32
 Found old corner post in swamp S.W. cor Dec 6.

26 02.8
 2024.6
 657.5
 1931.7
 13

Set I.P.

500 I.P.

Set I.P.

Note Randon Line
 Trying to locate
 S.E. cor Dec 6 135-32
 No witnesses
 found in swamp

P.O.T.

NA 44				
BSA 40	210.00	202.00		
To A 45	89.48	2100.0		
NA 20				
BSA 23	273.21	1300.0		
To A 46	183.10	1445.8		
To A 47	113.00	2745.8		
To A 48	183.10	1300.0		
NA 30				
BSA 38	179.24	2020.6		
To A 38	179.24	2825.9		
To A 22	90.24	3399.7		
NA 22				
BSA 30	270.24	3399.7		
To A 49	182.15	1463.3		
NA 49				
BSA 22	2.15	1463.3		
To A 50	243.42	1463.4		

←

P.O.T

US. The Fig. on N.E. & S. S. ...
 Very old house on ...
 Court ...

Forest N.E. W. ...

Set T.P. ...

Note: Typed to ...
 localities ...
 ...

NA50	69.49	1465.4
B5A49	181.20	680.3
To A 52	181.20	118.0
NA 51		
B5A 50		
To A 40	359.29	264.4

Get TR Prop...

I.P.

Kata 95	26-46	290.2
BS Δ 92	25-55	
To Δ 84	236-46	166.0
	237-39	
	57-39	
Kata 454	56-48	166.0
BS Δ 83	178-11	55.4
To Δ 23		

Δ 21

OR
 off 178-09
 CHANGED BY DTC
 7/6/82

THIS WAS A DIFFICULT JOB! THE HEAVY
 MOSQUITOES & MILES OF BRUSHING
 WERE SOMETHING ELSE.

S. Carlson 6/3/81

17800 23
 17200