

MN/DNR

NE Cor Sec 36 - 136-33

B.C.T.P. S.E. - 42.2'

B.C.P.P. N.W. - 58.1'

Large Rock - closes side - S.W. 59.0'

NE Cor Sec 36 - 136-33

4' S.P. in place

B.C. 10" g. Pipe S.W. - 57.9

B.C. Cor Fa. Post N. - 26.9

S.W. Cor Sec 36 - 136-33

A-550 W.C. Spl. in N.S.W. Rd -

B.C. N. Gate Post NE 56.9'

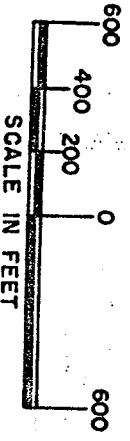
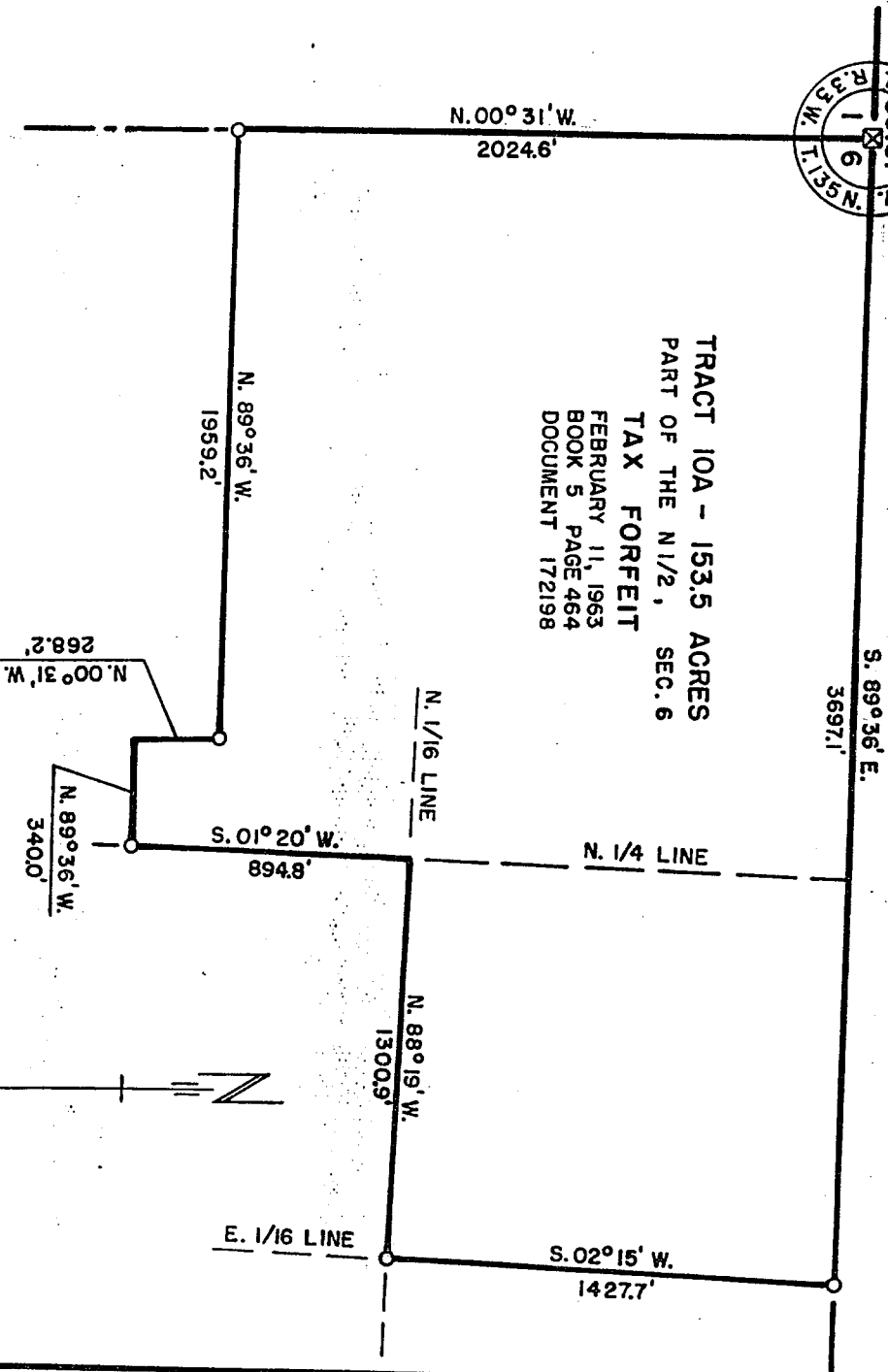
B.C. Tank Rock Fa. Post ESE 26.4'

B.C. Cor Fa. Post SW - 47.1

WADENA CO.
CASS CO.



TRACT 10A - 153.5 ACRES
PART OF THE N 1/2, SEC. 6
TAX FORFEIT
FEBRUARY 11, 1963
BOOK 5 PAGE 464
DOCUMENT 172198



CONCRETE MONUMENT IN PLACE
 IRON MARKER SET

MINNESOTA CONSERVATION DEPARTMENT	
DIVISION OF GAME & FISH	
PROPERTY MAP	
DRY SAND LAKE WILDLIFE MANAGEMENT UNIT	
CASS CO. - NEAR POPLAR	
SEC. 6	T. 135 N., R. 32 W.
DRAWN AFR 8-29-62	BUREAU OF ENGINEERING
CHECKED HUN 9-5-62	REVISOR
REVISOR	DATE
REQ. 60-123	FILE G-406X

LAND DESCRIPTION
DRY SAND LAKE WILDLIFE MANAGEMENT UNIT - CASS COUNTY - G-406X
TRACT 10A - TAX FORFEIT

All that part of the north half of Sec. 6, Twp. 135 N., R. 32 W. of the 5th P.M. bounded by the following described lines;

Beginning at the northwest corner of said Sec. 6,

Thence S. 89°-36' E. - 3697.1 ft. along the north line of said Section 6 to the east 1/16 line thereof,
Thence S. 02°-15' W. - 1427.7 ft. along the east 1/16 line of said Section 6 to the north 1/16 line thereof,
Thence N. 88°-19' W. - 1300.9 ft. along the north 1/16 line of said Section 6 to the north quarter line thereof,
Thence S. 01°-20' W. - 894.8 ft. along the north quarter line of said Section 6,
Thence N. 89°-36' W. - 340.0 ft.
Thence N. 00°-31' W. - 268.2 ft.
Thence N. 89°-36' W. - 1959.1 ft. to the west line of said Section 6,
Thence N. 00°-31' W. - 2024.6 ft. along the west line of said Section 6 to the northwest corner thereof and the point of beginning;

Including all riparian rights to the contained 153.5 acres more or less and subject to existing road easements.

RJO:reg
9/21/62
Checked HRP/9-21-62

Kata 95	26-46	290.2
BS Δ 92	25-55	
To Δ 84	236-46	166.0
	237-39	
	57-39	
Kata 454	56-48	166.0
BS Δ 83	178-11	55.4
To Δ 23		

Δ 21

OR
 off 178-09
 CHANGED BY DTC
 7/6/82

THIS WAS A DIFFICULT JOB! THE HEAVY
 MOSQUITOES & MILES OF BRUSHING
 WERE SOMETHING ELSE.

S. Carlson 6/3/81

17800 23
 17200

NA50	69.29	1465.4
BSA49	181.20	680.3
NA51	181.20	118.0
NA52		
NA53	270.00	342.4
NA54		
NA55		
NA56		
NA57		
NA58		
NA59		
NA60		
NA61		
NA62		
NA63		
NA64		
NA65		
NA66		
NA67		
NA68		
NA69		
NA70		
NA71		
NA72		
NA73		
NA74		
NA75		
NA76		
NA77		
NA78		
NA79		
NA80		
NA81		
NA82		
NA83		
NA84		
NA85		
NA86		
NA87		
NA88		
NA89		
NA90		
NA91		
NA92		
NA93		
NA94		
NA95		
NA96		
NA97		
NA98		
NA99		
NA100		

Get J.R. Prop...

J.R.

NA 44				
BSA 40	210.00	203.00		
To A 45	89.48	2100.0		
NA 20				
BSA 23	273.21	1300.0		
To A 46	183.10	1445.8		
To A 47	113.00	2745.8		
To A 48	183.10	1300.0		
NA 30				
BSA 38	179.24	2026.6		
To A 38	179.24	2825.9		
To A 22	90.24	3399.7		
NA 22				
BSA 30	270.24	3399.7		
To A 49	182.15	1463.3		
NA 49				
BSA 22	2.15	1463.3		
To A 50	243.42	1463.4		

←

P.O.T

US. The Fig. on N.E. & S. Road
 Very old house on N.E. side of road
 Court on N. side of road

Forest N.E. W. 4500 ft w/ N. side.

Set T.P. 300

Note: Typed to
 localities. P.P. can
 be 1. 4-10-11 T.O.
 O.K.

N 432	359.26	5282.7
B 431	179.29	2024.6
To A 39	179.29	5385.8
N 432		
B 430	270.24	1959.2
To A 40	179.29	658.2
N 441		
B 440	359.29	658.2
To A 43	90.24	640.8
N 442		
B 441	270.24	640.8
To A 44	179.29	2700.0
N 443		
B 442	359.29	2700.0
To A 44	90.00	569.0

NW cor Dec 6 - 135-32

Set I.P. S.W. cor To 10² Dec 6 - 135-32
 Found old corner post in swamp S.W. cor Dec 6.

5282.7
 2024.6
 5385.8
 1959.2
 658.2
 640.8
 2700.0
 569.0
 13

Set I.P.

500 I.P.

Set I.P.

Note Randon Line
 Trying to locate
 S.E. cor Dec 6 135-32
 No witnesses
 found in swamp

P.O.T.

No. 1 Δ 33
 BS Δ 32 93.09
 TO Δ 34 249.45 1234.9

No. 2 Δ 34
 BS Δ 33 69.45
 TO Δ 3A 179.26 2904.2

No. 3 Δ 2
 BS Δ 1 90.00 5276.9
 TO Δ 35 180.00 5278.7

No. 4 Δ 35
 BS Δ 2 380.00 5278.7
 TO Δ 32 90.00 5329.2

$T_r = 12$

BS Δ 1 359.26 5288.7
 TO Δ 36 359.26 660.0
 TO Δ 37 270.00 660.0

No. 5 Δ 37
 BS Δ 32 90.00 660.0
 TO Δ 36 44.46 927.8

Computed Dis @ Angle:

Set I.P. on W. Line Sect 31

SE. cor. Sect. 31

NW. cor. Sec 36
 NE. cor. Sec 36
 SW. cor. Sec 36

SET I.P.
 SET I.P.

Not A 27	131-57	
BS Δ 26	284-11	239.8
To A 28		
Not A 28		
BS Δ 27	104-11	
To A 29	285-57	437.8
To Δ 25	178-09	734.7
To Δ "X"	178-09	2062.1
Not 29		
BS Δ 28	105-57	
To Δ 30	307-30	561.6
Not Δ 30		
BS Δ 29	127-30	
To Δ 31	295-06	538.9
Not Δ 31		
BS Δ 80	115-06	
To Δ 32	47-43	844.2
Not Δ 32		
BS Δ 31	227-43	
To Δ 33	273-09	455.7

Computed distance
"

Set I.P. N-S. Y line Sect 31

Set I.P.
in water
in water
in water
Assume 5/4 corner 31

Set I.P.

Set I.P.

Set I.P.

Set I.P.

Not 17A				
BS Δ 3A	270-24	2562.5		
To Δ 21	90-24	477.5		
To Δ 22	90-24	1137.2		
Not Δ 21				
BS Δ 17A	270-24	477.5		
To Δ 23	358-09	800.0		
To Δ "X"	270-24	660.0	S. 1/4 cor Sect 81	
Not Δ 23				
BS Δ 21	178-09			
To Δ 24	6-42	530.8		
Not Δ 24				
BS Δ 23	186-42			
To Δ 25	270-17	740.0		
To Δ 26	334-49	392.2		
Not Δ 26				
BS Δ 24	154-49			
To Δ 27	311-57	486.1		

US 1

(set I.P.)
Corrected line on South line Sect 31

Set I.P.
Set. I.P. S. 1/4 cor. of S. E. 1/4 of Sect 31

Set I.P. Property corner
in water (computed)

Set I.P.

1/4 cor S. 1/4 line (in Lake)
Set I.P.

Set I.P.

Not Δ 3A
 BS Δ 1 359-26 5288.7
 TO 17 90-00 2562.5
 TO 18 112-26
 computed distance

Not 18
 BS Δ 3A 292-26
 TO Δ 17 30-14 987.0

Not Δ 17
 BS Δ 3A 270-00 2562.5
 TO Δ 19 90-00 2178.5

Not Δ 19
 BS Δ 17 270-00 2178.5
 TO Δ 10 97-00 282.1

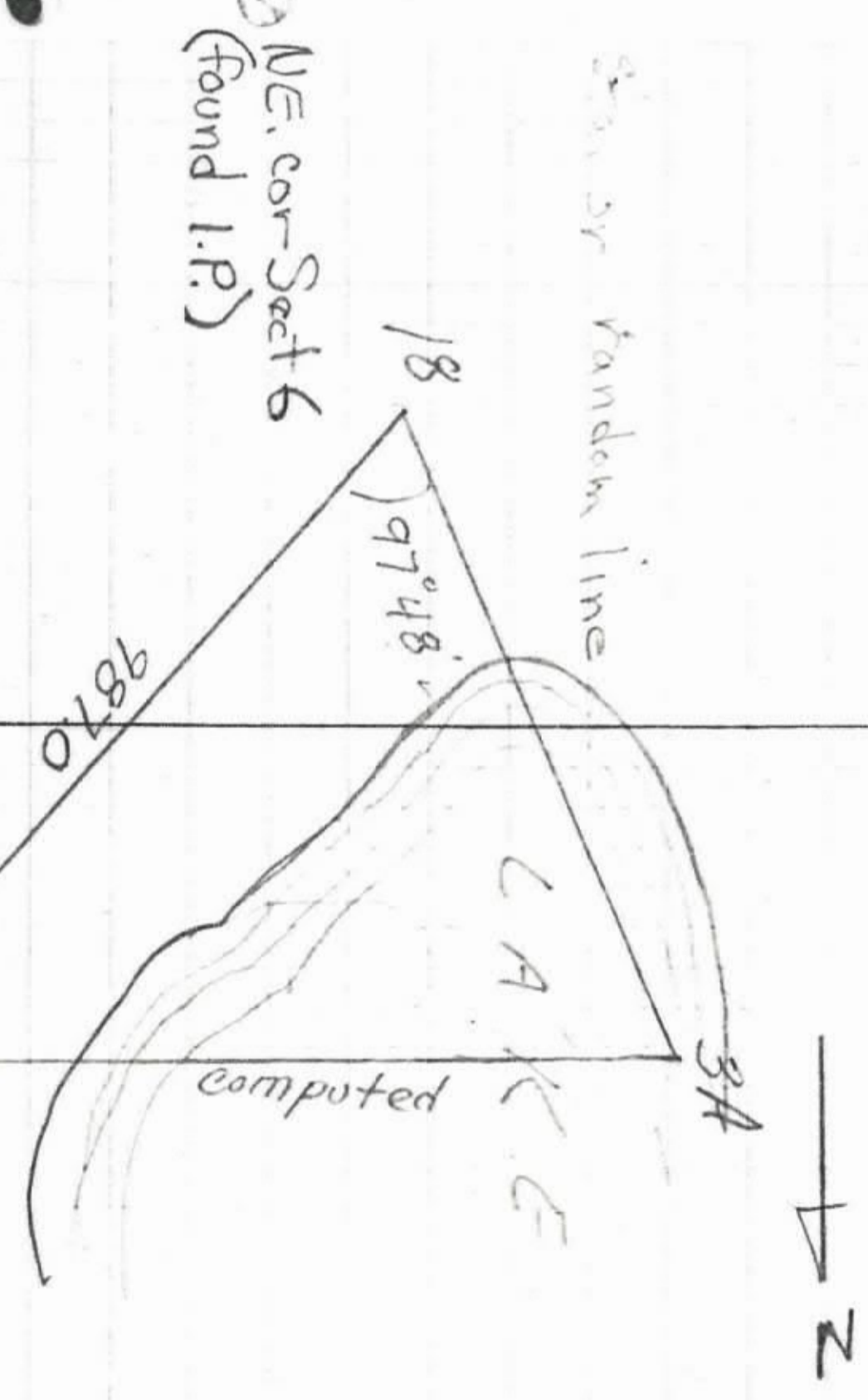
Not Δ 3A
 TO Δ 20 90-24 5020.0
 computed

KA 20
 BS Δ 38 270-24
 TO Δ 44 183-10 2724.0

S.W. cor. Sect 31 concrete monument
 N.W. cor Sect 31
 "

tria. Sta.

sta. on random line



S.W. Cor. Sect. 31
 NE Cor. Sect 6

Old Pa. Cor ASSUMED E
 Note No S.E. Cor
 found W.C. point
 111 yds from well
 cor. Sect. and N. 87°

Not Δ 14			
BS Δ 13	324-95		
To Δ 15	151-06	388.5	
Not Δ 15			
BS Δ 14	331-06		
To Δ 16	126-39	455.8	
Not Δ 1			
To Δ 16	89-57	4901.8	

computed

4741.0

8

IRON PIPE IN PLACE
 N.E. COR. SEC. 36
 N.E. COR. SEC 31

N.E. COR. SEC 31

Closure sheet

Ref 8				
BS Δ 7	171-09			
TO Δ 9	46-10	592.1		
Ref Δ 9				
BS Δ 8	226-10			
TO Δ 10	54-42	435.2		
Ref Δ 10				
BS Δ 9	234-42			
TO Δ 11	133-37	845.0		
Ref Δ 11				
BS Δ 10	313-37			
TO Δ 12	105-24	501.0		
Ref Δ 12				
BS Δ 11	285-24			
TO Δ 13	111-25	711.0		
Ref Δ 13				
BS Δ 12	291-25			
TO Δ 14	144-45	599.1		

Main dam
Points

KA Δ 1			
BS Δ 2	270-00	5276.9	
TO Δ 3	180-00	5280.0	
TO Δ 3A	179-26	5288.7	
TO Δ 4	89-51	967.3	
KA Δ 4			
BS Δ 1	269-51		
TO Δ 5	32-29	275.2	
KA Δ 5			
BS Δ 4	212-25		
TO Δ 6	42-40	209.1	
KA Δ 6			
BS Δ 5	222-40		
TO Δ 7	101-44	386.3	
KA Δ 7			
BS Δ 6	281-44		
TO Δ 8	351-09	1114.1	

N.E. cor. Sec 36.

I.P. in place

N.W. cor. Sec 36.

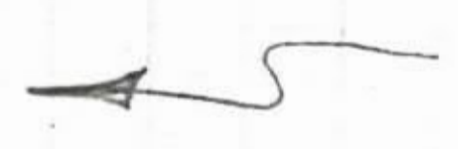
I.P. in place

Random line. To S.E. cor. Sec 36.

Corrected line to concrete monument to S.E. cor. 36.

P.O.T. To N.E. cor. Sec 36.

Random line



Stations

75-251
25-AM