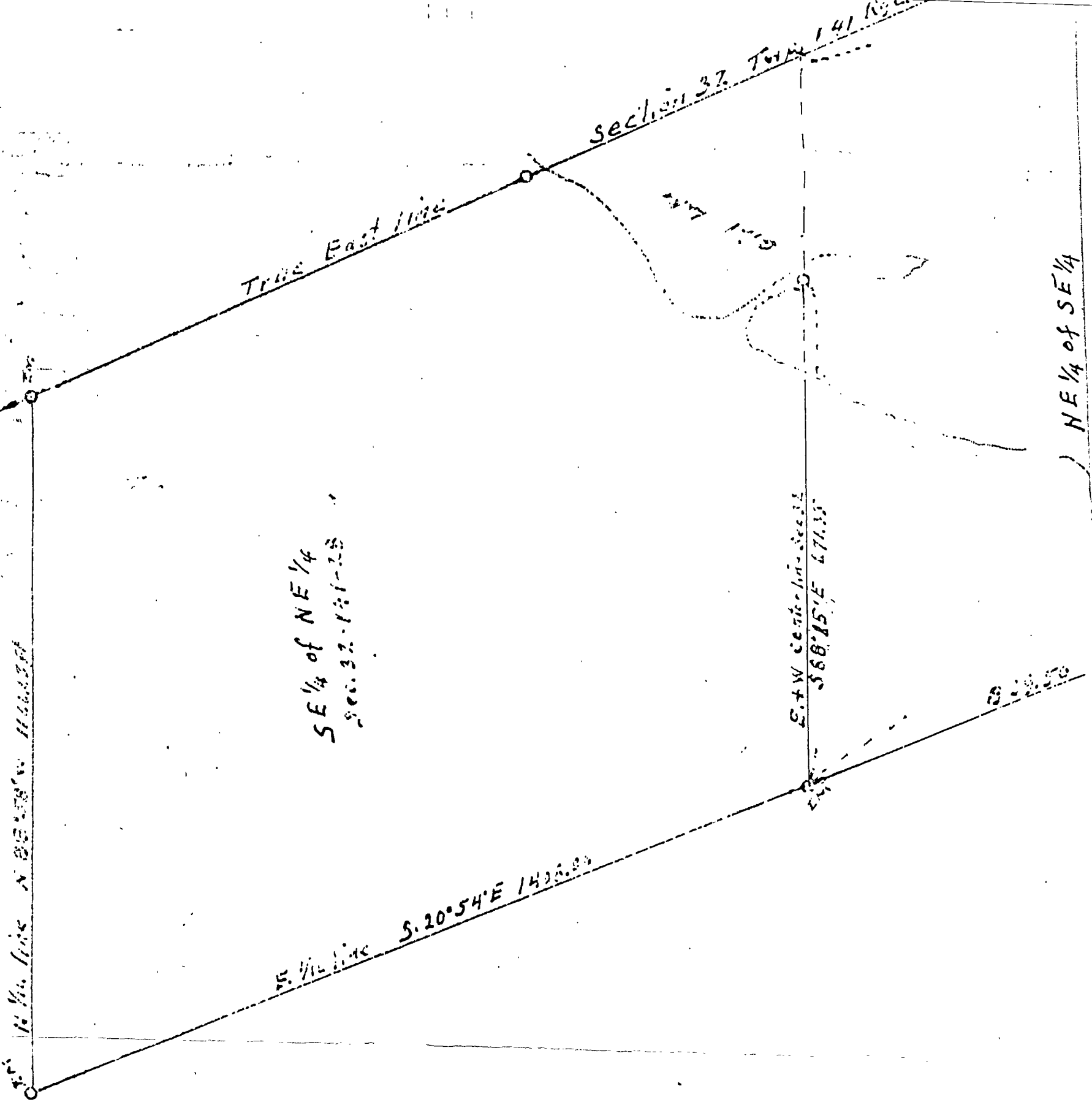


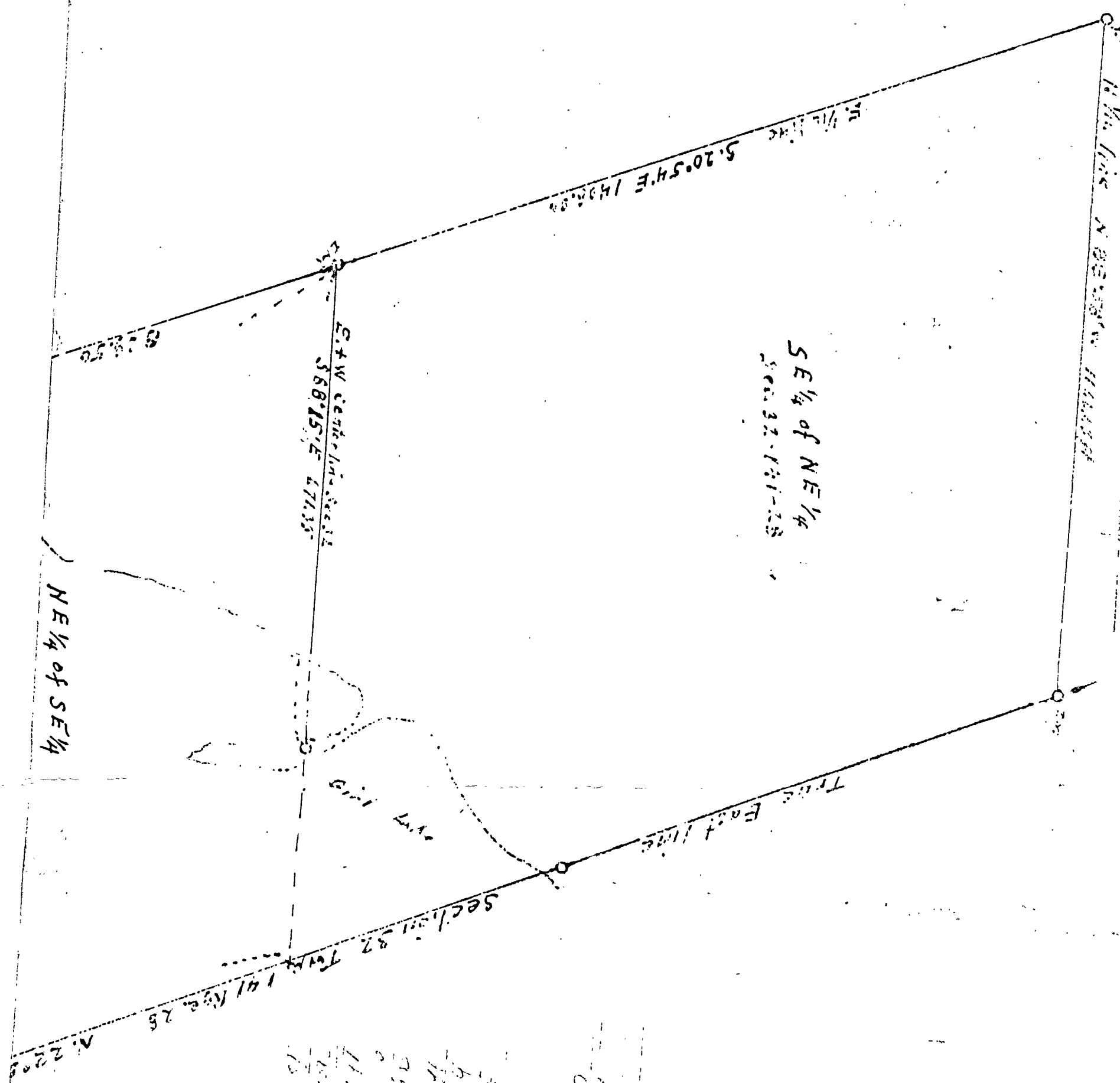
SKETCH

Showing a part of Section 32, Township 28 N., Range 28 E., 1st. South line being the 1/4 mile
Standard Parallel Surveyed by John W. Curo and Harold Curo in 1940 - The True East
line of Section 32 - Surveyed by John W. Curo and recorded in Book D, maps 286, in County Record Book
of Surveys. The E 1/4 line and the S 1/4 line surveyed in 1958 by Harold Curo.

The courses and measurements shown herein are correct.



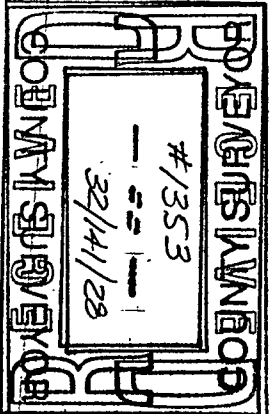
1942 141 Page 28. 1/2 Section being All Park
 by John W. Curro and Harold Curro in 1940 - The Hill
 and Curro and Harold Curro in 1940 - The Hill
 5/16 Curro and Harold Curro in 1940 - The Hill
 5/16 Curro and Harold Curro in 1940 - The Hill
 5/16 Curro and Harold Curro in 1940 - The Hill



SCALE
 1 inch = 200 ft
 0 = Iron pipe

CERTIFICATE

Harold Curro County Surveyor of Cook County, Ill.
 do hereby certify that I am a Registered Surveyor
 of the State of Illinois. The map here presented shows
 a plat of land in the S. 1/2 of the N. 1/4 of Section 32,
 Township 21 North, Range 25 East, Cook County, Illinois.
 The map is a true and correct copy of the original
 map as shown to me by the owner of the land and
 is correct and true and has been filed in my office
 as required by law.
 Harold Curro
 County Surveyor of Cook County, Ill.



N 5 1/4 Sec 141

S 1/4 of SE 1/4
Sec. 32-141-28

Sec 32-141-28

Gill Lake

Gill Lake

SE 1/4 of SE 1/4
Sec. 32-141-28

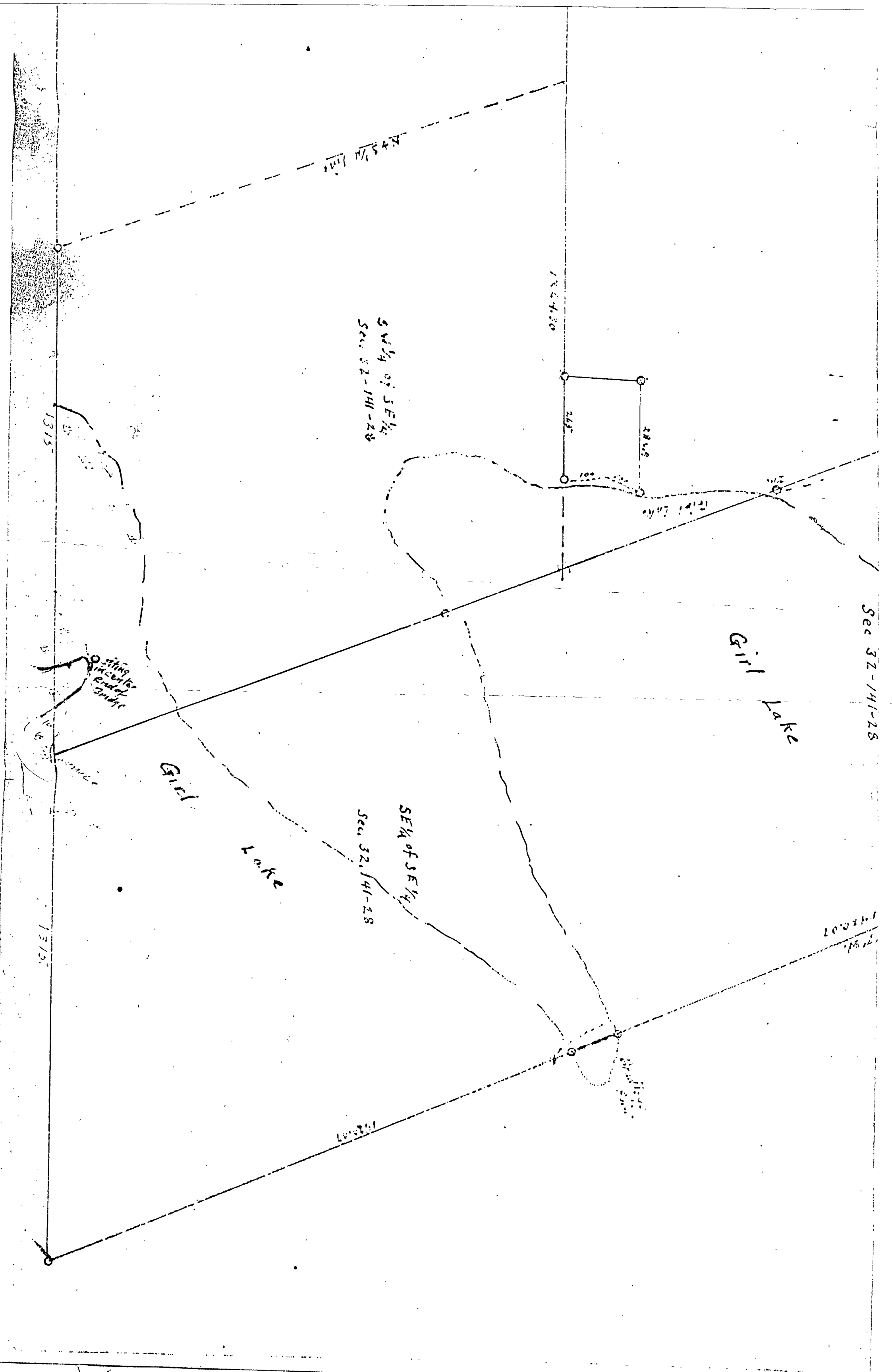
148007

148007

1315

1315

center
end of
gill



W. line N 45° 48' W 1389'

Shil line 389° 40' E
1244.30

SE 1/4 of SW 1/4
Sec. 32 141-28

N 45 1/4 line

1244.30

SW 1/4 of SE 1/4
Sec. 32 141-28

248'

228.65

100'

1211' line

1315

Outing
in center
end of
bridge

Girl

Lake

SE 1/4 of SE 1/4
Sec. 32, 14

Girl Lake

Sec 32-141-28