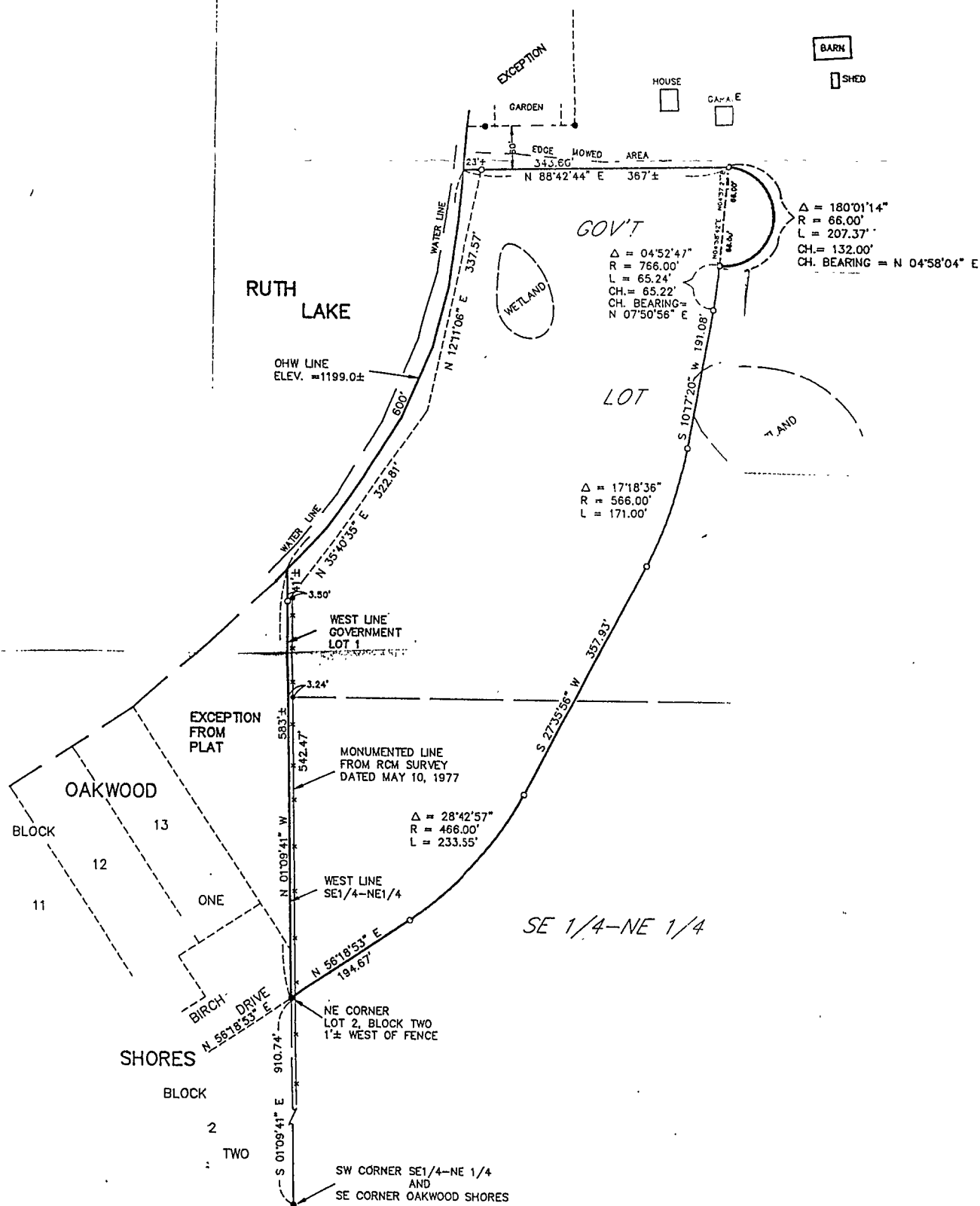


CERTIFICATE OF SURVEY

PART OF THE SE 1/4-NE 1/4 AND
PART OF GOV'T LOT 1
SEC, 16, T. 134 N., R. 29 W.
CASS COUNTY, MN.



The part of Government 1 (SE1/4-NE1/4), Section 16, Minnesota described as for said SE1/4-NE1/4 which is SHORES, according to the Office, and assuming said minutes 41 seconds East 53 seconds East 194.67 feet a tangential curve, concave seconds and radius 466.00 minutes 56 seconds East, northeasterly 171.00 feet 17 degrees 18 minutes 36 North 10 degrees 17 minutes monument; thence north northwest, central angle