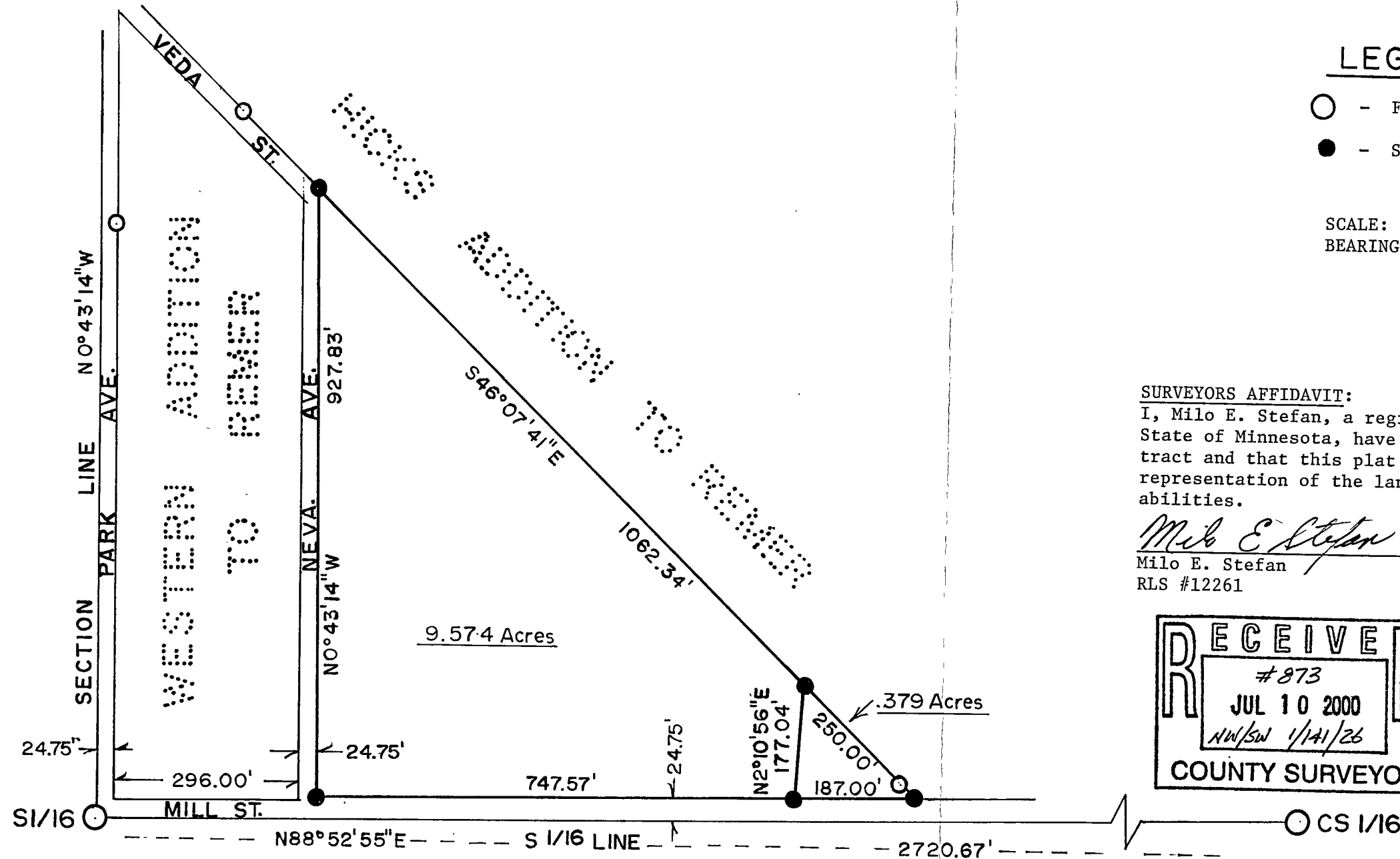


CERTIFICATE of SURVEY for BRUCE & DEAN ENGEN

BEING THE UNPLATTED PART OF THE NW $\frac{1}{4}$ SW $\frac{1}{4}$ SECTION 1, TOWNSHIP 141 NORTH,
RANGE 26 WEST OF THE 5TH PRINCIPAL MERIDIAN
CASS COUNTY, MINNESOTA



LEGEND

- - Found Monuments
- - Set 1/2" x 24" Re-Bar

SCALE: 1" = 200'
BEARINGS ARE ASTRONOMIC



SURVEYORS AFFIDAVIT:

I, Milo E. Stefan, a registered land surveyor in the State of Minnesota, have surveyed and marked the said tract and that this plat drawing is a true and correct representation of the lands surveyed to the best of my abilities.

Milo E. Stefan
Milo E. Stefan
RLS #12261

5/17/2000
Date

